

Product Datasheet

alpha Tubulin Antibody (TU-01) - BSA Free NB500-333

Unit Size: 0.1 mg

Store at 4C. Do not freeze.

www.novusbio.com



technical@novusbio.com

Reviews: 1 **Publications: 1**

Protocols, Publications, Related Products, Reviews, Research Tools and Images at:
www.novusbio.com/NB500-333

Updated 10/23/2024 v.20.1

Earn rewards for product
reviews and publications.

Submit a publication at www.novusbio.com/publications

Submit a review at www.novusbio.com/reviews/destination/NB500-333



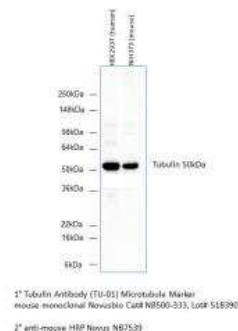
NB500-333

alpha Tubulin Antibody (TU-01) - BSA Free

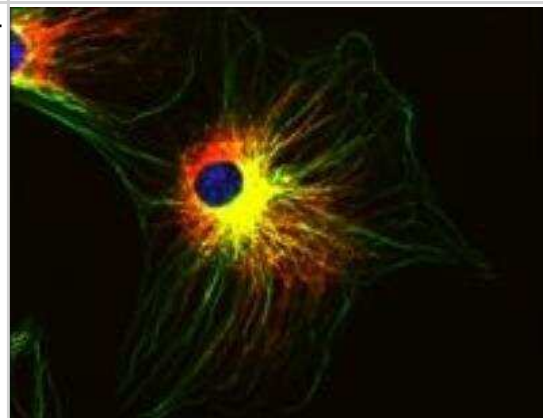
Product Information	
Unit Size	0.1 mg
Concentration	1.0 mg/ml
Storage	Store at 4C. Do not freeze.
Clonality	Monoclonal
Clone	TU-01
Preservative	0.9% Sodium Azide
Isotype	IgG1
Purity	Protein A purified
Buffer	PBS (pH 7.4)
Target Molecular Weight	50 kDa
Product Description	
Host	Mouse
Gene ID	7846
Gene Symbol	TUBA1A
Species	Human, Mouse, Rat, Porcine, Mammal, Plant, Turkey, Yeast
Reactivity Notes	Plant reactivity reported in scientific literature (PMID: 26594217).
Marker	Microtubule Marker
Specificity/Sensitivity	This alpha Tubulin Antibody (TU-01) recognizes the defined epitope (aa 65-97) on N-terminal structural domain of alpha tubulin.
Immunogen	This alpha Tubulin Antibody (TU-01) was developed against a fraction of tubulin purified from pig brain by two cycles of polymerization-depolymerization.
Product Application Details	
Applications	Western Blot, Flow Cytometry, Flow (Intracellular), Immunocytochemistry/Immunofluorescence, Immunohistochemistry, Immunohistochemistry-Paraffin, Immunoprecipitation
Recommended Dilutions	Western Blot 1-2 ug/ml, Flow Cytometry, Immunohistochemistry 1:10-1:500, Immunocytochemistry/ Immunofluorescence 1:10-1:500, Immunoprecipitation 1:10-1:500, Immunohistochemistry-Paraffin 5 ug/ml, Flow (Intracellular) 1-4 ug/ml
Application Notes	Western blotting: Recommended dilution in reducing conditions.

Images

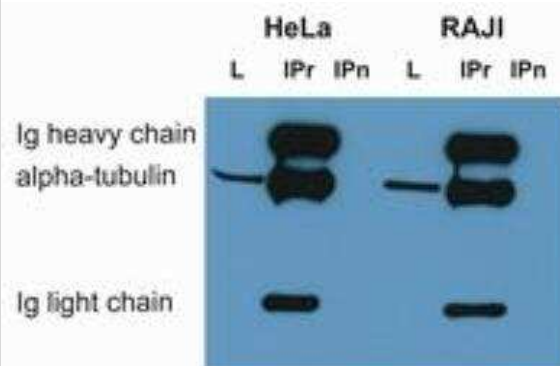
Western Blot: alpha Tubulin Antibody (TU-01) [NB500-333] - Analysis of Tubulin in HEK293T and NIH/3T3 cells using Tubulin antibody; alpha tubulin molecular weight: 50 kDa. Image from verified customer review.



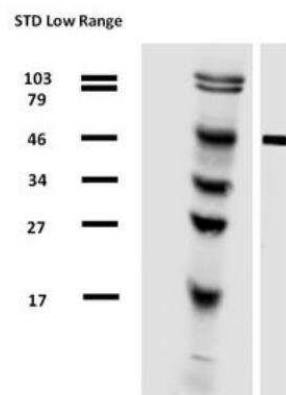
Immunocytochemistry/Immunofluorescence: alpha Tubulin Antibody (TU-01) [NB500-333] - Staining of 3T3 mouse embryonal fibroblast cell line using anti-alpha-tubulin (TU-01; green) and anti-Vimentin (VI-01; red). Nucleus is stained with DAPI (blue).



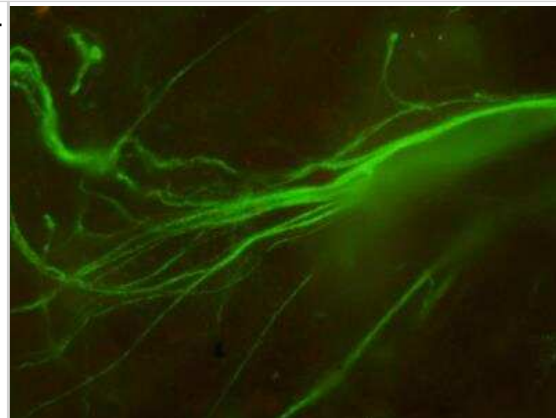
Immunoprecipitation: alpha Tubulin Antibody (TU-01) [NB500-333] - alpha Tubulin from HeLa and RAJI cell lysate by antibody TU-16 and its detection by antibody TU-01. IgM heavy chain (76-92 kDa) and IgM light chain (25-30 kDa) indicated. Molecular weight of alpha tubulin is around 50 kDa. L = lysate IPr = immunoprecipitate (reducing conditions) IPn = immunoprecipitate (non-reducing conditions)



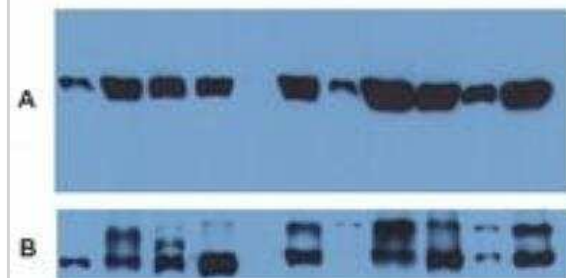
Western Blot: alpha Tubulin Antibody (TU-01) [NB500-333] - Analysis of alpha-tubulin (molecular weight of 50 kDa) in porcine brain lysate by antibody TU-01 biotin.



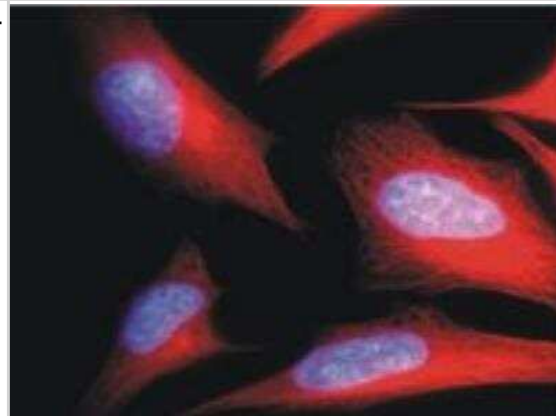
Immunocytochemistry/Immunofluorescence: alpha Tubulin Antibody (TU-01) [NB500-333] - Tubulin filament in HeLa. Image from verified customer review.



Western Blot: alpha Tubulin Antibody (TU-01) [NB500-333] - Use of anti-alpha-tubulin antibody TU-01 as a loading control (A) in an Western blotting experiment revealing the staining pattern of lysates of various cell lines by a newly developed monoclonal antibody (B). Alpha tubulin molecular weight: 50 kDa.



Immunocytochemistry/Immunofluorescence: alpha Tubulin Antibody (TU-01) [NB500-333] - Staining of HeLa human cervix carcinoma cell line using anti-alpha-tubulin (TU-01; red). Nucleus is stained with DAPI (blue).



Publications

Gzyl J, Chmielowska-Bak J, Przymusinski R, Gwozdz EA. Cadmium affects microtubule organization and post-translational modifications of tubulin in seedlings of soybean (*Glycine max* L.). *Front Plant Sci.* 2015-11-23 [PMID: 26594217] (WB, Plant)

Details:

Tubulin antibody (clone TU-01) was used for WB analysis (2D gel electrophoresis) of various alpha-isoforms of tubulin in seedlings of soybean *Glycine max* L (FIGURE 5).



Novus Biologicals USA

10730 E. Briarwood Avenue
Centennial, CO 80112
USA
Phone: 303.730.1950
Toll Free: 1.888.506.6887
Fax: 303.730.1966
nb-customerservice@bio-techne.com

Bio-Techne Canada

21 Canmotor Ave
Toronto, ON M8Z 4E6
Canada
Phone: 905.827.6400
Toll Free: 855.668.8722
Fax: 905.827.6402
canada.inquires@bio-techne.com

Bio-Techne Ltd

19 Barton Lane
Abingdon Science Park
Abingdon, OX14 3NB, United Kingdom
Phone: (44) (0) 1235 529449
Free Phone: 0800 37 34 15
Fax: (44) (0) 1235 533420
info.EMEA@bio-techne.com

General Contact Information

www.novusbio.com
Technical Support: nb-technical@bio-techne.com
Orders: nb-customerservice@bio-techne.com
General: novus@novusbio.com

Products Related to NB500-333

HAF007	Goat anti-Mouse IgG Secondary Antibody [HRP]
NB720-B	Rabbit anti-Mouse IgG (H+L) Secondary Antibody [Biotin]
NBP1-97005-0.5mg	Mouse IgG1 Isotype Control (MG1)
H00007846-Q01-10ug	Recombinant Human alpha Tubulin GST (N-Term) Protein

Limitations

This product is for research use only and is not approved for use in humans or in clinical diagnosis. Primary Antibodies are guaranteed for 1 year from date of receipt.

For more information on our 100% guarantee, please visit www.novusbio.com/guarantee

Earn gift cards/discounts by submitting a review: www.novusbio.com/reviews/submit/NB500-333

Earn gift cards/discounts by submitting a publication using this product:
www.novusbio.com/publications

