

Product Datasheet

Kappa Light Chain Antibody (MEM-09) [mFluor Violet 500 SE] NB500-331MFV500

Unit Size: 0.1 ml

Store at 4C in the dark.

www.novusbio.com



technical@novusbio.com

Protocols, Publications, Related Products, Reviews, Research Tools and Images at:
www.novusbio.com/NB500-331MFV500

Updated 9/20/2023 v.20.1

Earn rewards for product reviews and publications.

Submit a publication at www.novusbio.com/publications

Submit a review at www.novusbio.com/reviews/destination/NB500-331MFV500



NB500-331MFV500

Kappa Light Chain Antibody (MEM-09) [mFluor Violet 500 SE]

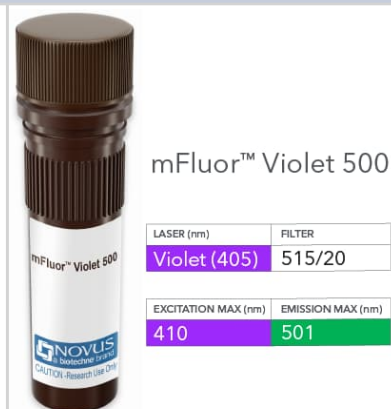
Product Information	
Unit Size	0.1 ml
Concentration	Please see the vial label for concentration. If unlisted please contact technical services.
Storage	Store at 4C in the dark.
Clonality	Monoclonal
Clone	MEM-09
Preservative	0.05% Sodium Azide
Isotype	IgG1
Conjugate	mFluor Violet 500 SE
Purity	Protein A purified
Buffer	50mM Sodium Borate

Product Description	
Host	Mouse
Gene ID	3514
Gene Symbol	IGKC
Species	Human
Specificity/Sensitivity	The antibody MEM-09 reacts with both secreted and B cell-surface human immunoglobulin, specifically reacts with kappa light chains (22.5 kDa). Material immunoprecipitated from human serum with the antibody MEM-09 consists of IgG and traces of IgM.
Immunogen	Crude thymus membrane fraction.

Product Application Details	
Applications	Western Blot, ELISA, Immunocytochemistry/Immunofluorescence, Immunohistochemistry, Immunohistochemistry-Paraffin, Immunoprecipitation, CyTOF-ready
Recommended Dilutions	Western Blot, ELISA, Immunohistochemistry, Immunocytochemistry/Immunofluorescence, Immunoprecipitation, Immunohistochemistry-Paraffin, CyTOF-ready
Application Notes	Optimal dilution of this antibody should be experimentally determined.

Images

Kappa Light Chain Antibody (MEM-09) [mFluor Violet 500 SE] - Vial of mFluor Violet 500 conjugated antibody. mFluor Violet 500 is optimally excited at 410 nm by the Violet laser (405 nm) and has an emission maximum of 501 nm.





Novus Biologicals USA

10730 E. Briarwood Avenue
Centennial, CO 80112
USA
Phone: 303.730.1950
Toll Free: 1.888.506.6887
Fax: 303.730.1966
nb-customerservice@bio-techne.com

Bio-Techne Canada

21 Canmotor Ave
Toronto, ON M8Z 4E6
Canada
Phone: 905.827.6400
Toll Free: 855.668.8722
Fax: 905.827.6402
canada.inquires@bio-techne.com

Bio-Techne Ltd

19 Barton Lane
Abingdon Science Park
Abingdon, OX14 3NB, United Kingdom
Phone: (44) (0) 1235 529449
Free Phone: 0800 37 34 15
Fax: (44) (0) 1235 533420
info.EMEA@bio-techne.com

General Contact Information

www.novusbio.com
Technical Support: nb-technical@bio-techne.com
Orders: nb-customerservice@bio-techne.com
General: novus@novusbio.com

Products Related to NB500-331MFV500

H00003514-P01-10ug	Recombinant Human Kappa Light Chain GST (N-Term) Protein
243-B3-002/CF	TGF-beta 3 [Unconjugated]
NB7463	Goat anti-Human Kappa Light Chain Secondary Antibody
NB100-1028	AIF-1/Iba1 Antibody

Limitations

This product is for research use only and is not approved for use in humans or in clinical diagnosis. Primary Antibodies are guaranteed for 1 year from date of receipt.

For more information on our 100% guarantee, please visit www.novusbio.com/guarantee

Earn gift cards/discounts by submitting a review: www.novusbio.com/reviews/submit/NB500-331MFV500

Earn gift cards/discounts by submitting a publication using this product:
www.novusbio.com/publications

