

Product Datasheet

Kappa Light Chain Antibody (MEM-09) - BSA Free NB500-331

Unit Size: 0.1 mg

Store at 4C. Do not freeze.

www.novusbio.com



technical@novusbio.com

Publications: 1

Protocols, Publications, Related Products, Reviews, Research Tools and Images at:
www.novusbio.com/NB500-331

Updated 10/23/2024 v.20.1

Earn rewards for product
reviews and publications.

Submit a publication at www.novusbio.com/publications

Submit a review at www.novusbio.com/reviews/destination/NB500-331



NB500-331

Kappa Light Chain Antibody (MEM-09) - BSA Free

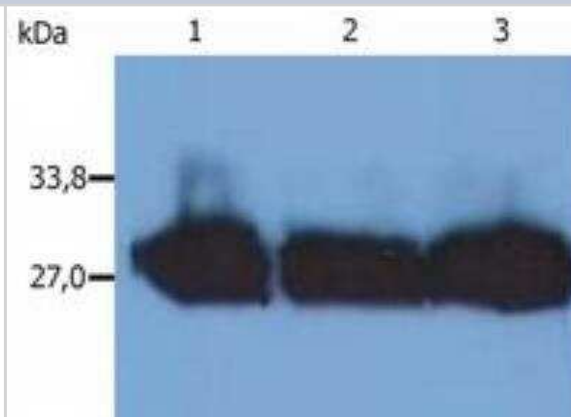
Product Information	
Unit Size	0.1 mg
Concentration	1.0 mg/ml
Storage	Store at 4C. Do not freeze.
Clonality	Monoclonal
Clone	MEM-09
Preservative	0.9% Sodium Azide
Isotype	IgG1
Purity	Protein A purified
Buffer	PBS (pH 7.4)
Target Molecular Weight	22.5 kDa

Product Description	
Host	Mouse
Gene ID	3514
Gene Symbol	IGKC
Species	Human
Specificity/Sensitivity	The antibody MEM-09 reacts with both secreted and B cell-surface human immunoglobulin, specifically reacts with kappa light chains (22.5 kDa). Material immunoprecipitated from human serum with the antibody MEM-09 consists of IgG and traces of IgM.
Immunogen	Crude thymus membrane fraction.

Product Application Details	
Applications	Western Blot, ELISA, Immunocytochemistry/ Immunofluorescence, Immunohistochemistry, Immunohistochemistry-Paraffin, Immunoprecipitation, CyTOF-ready
Recommended Dilutions	Western Blot 1:1000, ELISA 1:2000, Immunohistochemistry 1:10-1:500, Immunocytochemistry/ Immunofluorescence 1:10-1:500, Immunoprecipitation 1:50, Immunohistochemistry-Paraffin 1:200, CyTOF-ready
Application Notes	This antibody is Cytof ready.

Images

Western Blot: Kappa Light Chain Antibody (MEM-09) [NB500-331] - Analysis (reducing conditions) of human blood sera using anti-human Immunoglobulin kappa-chain (MEM-09). Lane 1-3: Human blood serum of different healthy donors



Publications

Horejsi V, Hilgert I, Kristofova H et al. Monoclonal antibodies against human leucocyte antigens. I Antibodies against beta-2-microglobulin, immunoglobulin kappa light chains, HLA-DR-like antigens, T8 antigen, T1 antigen, a monocyte antigen, and a pan-leucocyte antigen. Folia Biol (Praha) 1986-01-01 [PMID: 2422063]





Novus Biologicals USA

10730 E. Briarwood Avenue
Centennial, CO 80112
USA
Phone: 303.730.1950
Toll Free: 1.888.506.6887
Fax: 303.730.1966
nb-customerservice@bio-techne.com

Bio-Techne Canada

21 Canmotor Ave
Toronto, ON M8Z 4E6
Canada
Phone: 905.827.6400
Toll Free: 855.668.8722
Fax: 905.827.6402
canada.inquires@bio-techne.com

Bio-Techne Ltd

19 Barton Lane
Abingdon Science Park
Abingdon, OX14 3NB, United Kingdom
Phone: (44) (0) 1235 529449
Free Phone: 0800 37 34 15
Fax: (44) (0) 1235 533420
info.EMEA@bio-techne.com

General Contact Information

www.novusbio.com
Technical Support: nb-technical@bio-techne.com
Orders: nb-customerservice@bio-techne.com
General: novus@novusbio.com

Products Related to NB500-331

HAF007	Goat anti-Mouse IgG Secondary Antibody [HRP]
NB720-B	Rabbit anti-Mouse IgG (H+L) Secondary Antibody [Biotin]
NBP1-97005-0.5mg	Mouse IgG1 Isotype Control (MG1)
NB500-331UV	Kappa Light Chain Antibody (MEM-09) [DyLight 350]

Limitations

This product is for research use only and is not approved for use in humans or in clinical diagnosis. Primary Antibodies are guaranteed for 1 year from date of receipt.

For more information on our 100% guarantee, please visit www.novusbio.com/guarantee

Earn gift cards/discounts by submitting a review: www.novusbio.com/reviews/submit/NB500-331

Earn gift cards/discounts by submitting a publication using this product:
www.novusbio.com/publications

