

# Product Datasheet

## CD59 Antibody (MEM-43) - BSA Free NB500-330

Unit Size: 0.1 mg

Store at 4C. Do not freeze.

[www.novusbio.com](http://www.novusbio.com)



[technical@novusbio.com](mailto:technical@novusbio.com)

**Reviews: 1 Publications: 7**

Protocols, Publications, Related Products, Reviews, Research Tools and Images at:  
[www.novusbio.com/NB500-330](http://www.novusbio.com/NB500-330)

Updated 10/23/2024 v.20.1

**Earn rewards for product  
reviews and publications.**

Submit a publication at [www.novusbio.com/publications](http://www.novusbio.com/publications)

Submit a review at [www.novusbio.com/reviews/destination/NB500-330](http://www.novusbio.com/reviews/destination/NB500-330)



**NB500-330**

CD59 Antibody (MEM-43) - BSA Free

**Product Information**

<b>Unit Size</b>	0.1 mg
<b>Concentration</b>	1 mg/ml
<b>Storage</b>	Store at 4C. Do not freeze.
<b>Clonality</b>	Monoclonal
<b>Clone</b>	MEM-43
<b>Preservative</b>	0.9% Sodium Azide
<b>Isotype</b>	IgG2a
<b>Purity</b>	Protein A purified
<b>Buffer</b>	PBS (pH 7.4)
<b>Target Molecular Weight</b>	20 kDa

**Product Description**

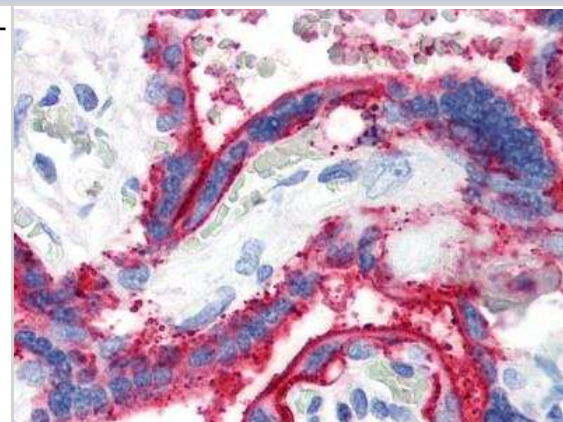
<b>Host</b>	Mouse
<b>Gene ID</b>	966
<b>Gene Symbol</b>	CD59
<b>Species</b>	Human
<b>Specificity/Sensitivity</b>	The antibody MEM-43 reacts with well defined epitope (W40, R-53) on CD59 (Protectin), an 18-20 kDa glycosylphosphatidylinositol (GPI)-anchored glycoprotein expressed on all hematopoietic cells; it is widely present on cells in all tissues.
<b>Immunogen</b>	Thymocytes and T lymphocytes (NM_000611.5).

**Product Application Details**

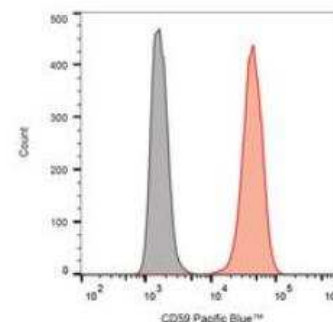
<b>Applications</b>	Flow Cytometry, Immunohistochemistry, Immunohistochemistry-Frozen, Immunohistochemistry-Paraffin, Immunoprecipitation, Block/Neutralize, CyTOF-ready
<b>Recommended Dilutions</b>	Flow Cytometry 0.5-4 ug/ml, Immunohistochemistry, Immunoprecipitation 1:50, Immunohistochemistry-Paraffin 10 ug/ml, Immunohistochemistry-Frozen, CyTOF-ready, Block/Neutralize
<b>Application Notes</b>	Use in blocking / neutralizing reported in scientific literature (PMID 24909955). CD59 antibody validated for IHC-F from a verified customer review. This antibody is CyTOF ready.

**Images**

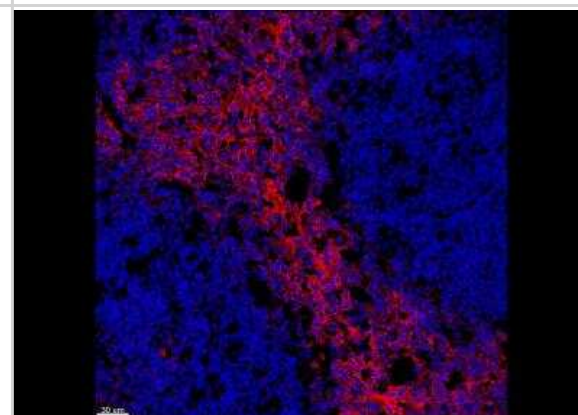
Immunohistochemistry-Paraffin: CD59 Antibody (MEM-43) [NB500-330] - Staining of human placenta (paraffin sections) using anti-CD59 (MEM-43).



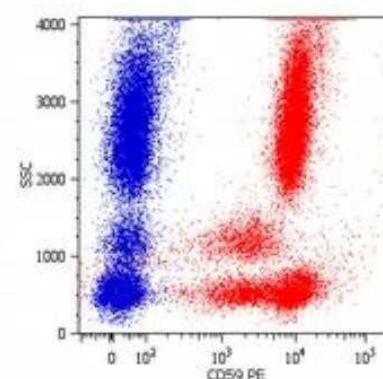
Flow Cytometry: CD59 Antibody (MEM-43) [NB500-330] - Surface staining of HL-60 (positive) and SP2 (negative) cells with anti-human CD59 (MEM-43) Pacific Blue™.



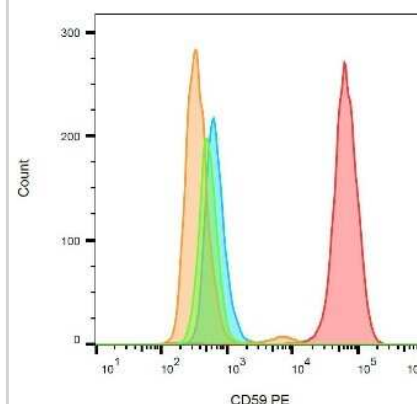
Immunohistochemistry-Frozen: CD59 Antibody (MEM-43) [NB500-330] - Human tonsil frozen tissue section stained for CD59 (red) and counterstained with DAPI (blue). Image from verified customer review.



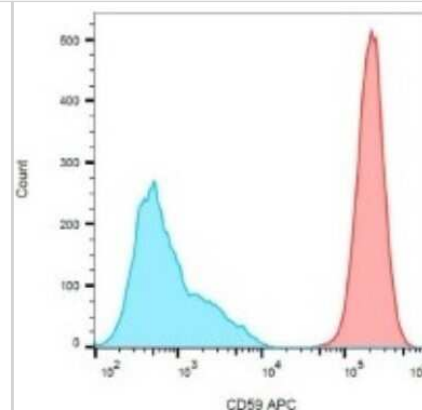
Flow Cytometry: CD59 Antibody (MEM-43) [NB500-330] - Analysis using the PE conjugate of NB500-330. Surface staining of human peripheral blood cells with anti-human CD59 (MEM-43) PE.



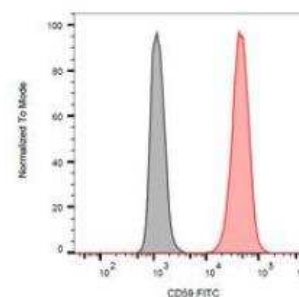
Flow Cytometry: CD59 Antibody (MEM-43) [NB500-330] - Using the PE direct conjugate Surface staining of HL-60 (positive) and SP2 (negative) cells with anti-human CD59 (MEM-43) PE.



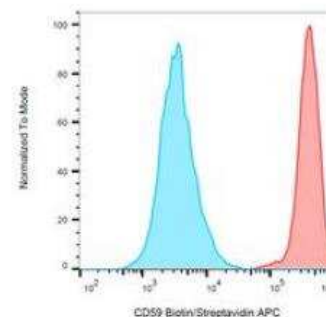
Flow Cytometry: CD59 Antibody (MEM-43) [NB500-330] - Using the Allophycocyanin direct conjugate Surface staining of HL-60 (positive) and SP2 (negative) cells with anti-human CD59 (MEM-43) APC.



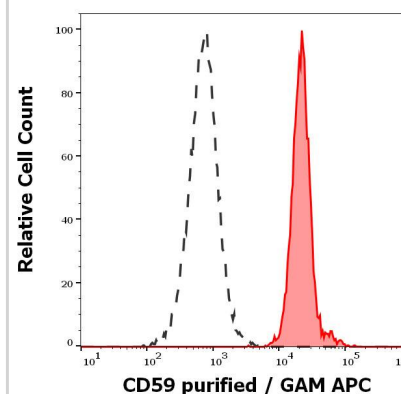
Flow Cytometry: CD59 Antibody (MEM-43) [NB500-330] - Surface staining of HL-60 (positive) and SP2 (negative) cells with anti-human CD59 (MEM-43) FITC.



Flow Cytometry: CD59 Antibody (MEM-43) [NB500-330] - Surface staining of HL-60 (positive) and SP2 (negative) cells with anti-human CD59 (MEM-43) biotin / streptavidin-APC.



Surface staining pattern of human peripheral blood stained using anti-human CD59 (MEM-43) purified antibody (concentration in sample 0.3 ug/ml, GAM APC).



## Publications

Li J, Wu Z, He H, Lu W. Correction to: Comparative analysis of groundwater contaminant sources identification based on simulation optimization and ensemble Kalman filter. *Environmental science and pollution research international* 2023-01-01 [PMID: 36504306]

Athena Labeau, Etienne Simon-Loriere, Mohamed-Lamine Hafirassou, Lucie Bonnet-Madin, Sarah Tessier, Alessia Zamborlini, Thierry Dupré, Nathalie Seta, Olivier Schwartz, Marie-Laure Chaix, Constance Delaugerre, Ali Amara, Laurent Meertens A Genome-Wide CRISPR-Cas9 Screen Identifies the Dolichol-Phosphate Mannose Synthase Complex as a Host Dependency Factor for Dengue Virus Infection *Journal of Virology* 2020-04-01 [PMID: 31915280]

Sheridan RT1 Hudon J Hank JA Sondel PM Kiessling LL. Rhamnose glycoconjugates for the recruitment of endogenous anti-carbohydrate antibodies to tumor cells. *Chembiochem*. 2014-06-06 [PMID: 24909955] (B/N, Human)

### Details:

CD59 antibody (clone MEM-43) was used in blocking/neutrilization application for blocking CD59 complement inhibitory function in an antibody-dependent complement-mediated cytotoxicity assay targeting M21 cells, allowing the activation of complement to be seen that would have been otherwise obscured. See full text of paper for detailed protocol on Complement-Dependent Cytotoxicity Assay and the data is shown in Figure 5.

Stefanova I Itigt et al. Characterization of a broadly expressed human leucocyte surface antigen MEM-43 anchored in membrane through phosphatidylinositol. *Mol Immunol* 1989-01-01 [PMID: 2918859]

Forsberg UH Itigt et al. Gene for human CD59 (likely Ly-6 homologue) is located on the short arm of chromosome 11. *Immunogenetics* 1989-01-01 [PMID: 2476389]

Stefanova I Itigt et al. GPI-anchored cell-surface molecules complexed to protein tyrosine kinases. *Science* 1991-01-01 [PMID: 1719635]

Cebecauer M, Cerny J, Horejsi V. Incorporation of leucocyte GPI-anchored proteins and protein tyrosine kinases into lipid-rich membrane domains of COS-7 cells. *Biochem Biophys Res Commun*;243(3):706-10. 1998-02-24 [PMID: 9500981]





### **Novus Biologicals USA**

10730 E. Briarwood Avenue  
Centennial, CO 80112  
USA  
Phone: 303.730.1950  
Toll Free: 1.888.506.6887  
Fax: 303.730.1966  
nb-customerservice@bio-techne.com

### **Bio-Techne Canada**

21 Canmotor Ave  
Toronto, ON M8Z 4E6  
Canada  
Phone: 905.827.6400  
Toll Free: 855.668.8722  
Fax: 905.827.6402  
canada.inquires@bio-techne.com

### **Bio-Techne Ltd**

19 Barton Lane  
Abingdon Science Park  
Abingdon, OX14 3NB, United Kingdom  
Phone: (44) (0) 1235 529449  
Free Phone: 0800 37 34 15  
Fax: (44) (0) 1235 533420  
info.EMEA@bio-techne.com

### **General Contact Information**

www.novusbio.com  
Technical Support: nb-technical@bio-techne.com  
Orders: nb-customerservice@bio-techne.com  
General: novus@novusbio.com

### **Products Related to NB500-330**

---

NBL1-08958	CD59 Overexpression Lysate
HAF007	Goat anti-Mouse IgG Secondary Antibody [HRP]
NB720-B	Rabbit anti-Mouse IgG (H+L) Secondary Antibody [Biotin]
NBP1-96778	Mouse IgG2a Isotype Control (M2A)

---

### **Limitations**

This product is for research use only and is not approved for use in humans or in clinical diagnosis. Primary Antibodies are guaranteed for 1 year from date of receipt.

For more information on our 100% guarantee, please visit [www.novusbio.com/guarantee](http://www.novusbio.com/guarantee)

Earn gift cards/discounts by submitting a review: [www.novusbio.com/reviews/submit/NB500-330](http://www.novusbio.com/reviews/submit/NB500-330)

Earn gift cards/discounts by submitting a publication using this product:  
[www.novusbio.com/publications](http://www.novusbio.com/publications)

