

Product Datasheet

HLA G Antibody (MEM-G/9) [PE]

NB500-314PE

Unit Size: 0.1 ml

Store at 4C in the dark.

www.novusbio.com



technical@novusbio.com

Protocols, Publications, Related Products, Reviews, Research Tools and Images at:
www.novusbio.com/NB500-314PE

Updated 10/23/2024 v.20.1

Earn rewards for product
reviews and publications.

Submit a publication at www.novusbio.com/publications

Submit a review at www.novusbio.com/reviews/destination/NB500-314PE



NB500-314PE

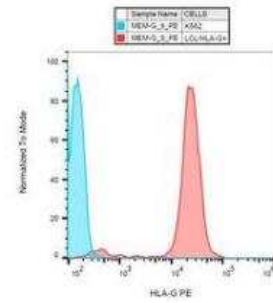
HLA G Antibody (MEM-G/9) [PE]

| Product Information | |
|-----------------------------|---|
| Unit Size | 0.1 ml |
| Concentration | Please see the vial label for concentration. If unlisted please contact technical services. |
| Storage | Store at 4C in the dark. |
| Clonality | Monoclonal |
| Clone | MEM-G/9 |
| Preservative | 0.05% Sodium Azide |
| Isotype | IgG1 |
| Conjugate | PE |
| Purity | Protein A purified |
| Buffer | PBS |
| Product Description | |
| Host | Mouse |
| Gene ID | 3135 |
| Gene Symbol | HLA-G |
| Species | Human, Mouse (Negative) |
| Specificity/Sensitivity | The antibody MEM-G/9 reacts with native form of human HLA-G1 on the cell surface as well as with soluble HLA-G5 isoform in its beta2-microglobulin associated form. Reactivity with HLA-G3 was also reported. The antibody MEM-G/9 is standard reagent thoroughly validated during 3rd International Conference on HLA-G (Paris, 2003). |
| Immunogen | Recombinant human HLA G Antibody (MEM-G/9) refolded with beta2-microglobulin and peptide (NM_002127.5) |
| Product Application Details | |
| Applications | Western Blot, ELISA, Flow Cytometry, Immunocytochemistry/Immunofluorescence, Immunohistochemistry, Immunohistochemistry-Frozen, Immunoprecipitation, CyTOF-ready |
| Recommended Dilutions | Western Blot, Flow Cytometry, ELISA, Immunohistochemistry, Immunocytochemistry/ Immunofluorescence, Immunoprecipitation, Immunohistochemistry-Frozen, CyTOF-ready |
| Application Notes | Optimal dilution of this antibody should be experimentally determined. |



Images

Flow Cytometry: HLA G Antibody (MEM-G/9) [PE] [NB500-314PE] - Surface staining of HLA-G1 transfectants (LCL-HLA-G1) using anti-HLA-G (MEM-G/9) PE.



**Novus Biologicals USA**

10730 E. Briarwood Avenue
Centennial, CO 80112
USA
Phone: 303.730.1950
Toll Free: 1.888.506.6887
Fax: 303.730.1966
nb-customerservice@bio-techne.com

Bio-Techne Canada

21 Canmotor Ave
Toronto, ON M8Z 4E6
Canada
Phone: 905.827.6400
Toll Free: 855.668.8722
Fax: 905.827.6402
canada.inquires@bio-techne.com

Bio-Techne Ltd

19 Barton Lane
Abingdon Science Park
Abingdon, OX14 3NB, United Kingdom
Phone: (44) (0) 1235 529449
Free Phone: 0800 37 34 15
Fax: (44) (0) 1235 533420
info.EMEA@bio-techne.com

General Contact Information

www.novusbio.com
Technical Support: nb-technical@bio-techne.com
Orders: nb-customerservice@bio-techne.com
General: novus@novusbio.com

Products Related to NB500-314PE

| | |
|-----------------|---------------------------------------|
| NBP1-97005PE | Mouse IgG1 Isotype Control (MG1) [PE] |
| NBP2-61457-20ug | Recombinant Human HLA G His Protein |
| 210-TA-005 | TNF-alpha [Unconjugated] |
| NBL1-11592 | HLA G Overexpression Lysate |

Limitations

This product is for research use only and is not approved for use in humans or in clinical diagnosis. Primary Antibodies are guaranteed for 1 year from date of receipt.

For more information on our 100% guarantee, please visit www.novusbio.com/guarantee

Earn gift cards/discounts by submitting a review: www.novusbio.com/reviews/submit/NB500-314PE

Earn gift cards/discounts by submitting a publication using this product:
www.novusbio.com/publications

