

Product Datasheet

MHC Class I Antibody (MEM-E/06) - BSA Free NB500-307

Unit Size: 0.1 mg

Store at 4C. Do not freeze.

www.novusbio.com



technical@novusbio.com

Protocols, Publications, Related Products, Reviews, Research Tools and Images at:
www.novusbio.com/NB500-307

Updated 10/23/2024 v.20.1

Earn rewards for product
reviews and publications.

Submit a publication at www.novusbio.com/publications

Submit a review at www.novusbio.com/reviews/destination/NB500-307



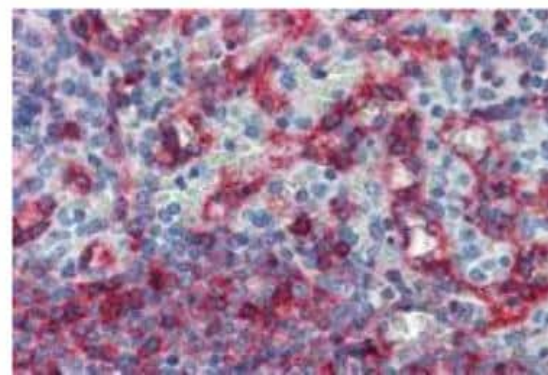
NB500-307

MHC Class I Antibody (MEM-E/06) - BSA Free

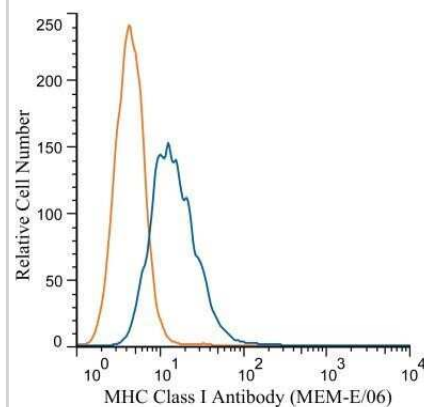
Product Information	
Unit Size	0.1 mg
Concentration	1.0 mg/ml
Storage	Store at 4C. Do not freeze.
Clonality	Monoclonal
Clone	MEM-E/06
Preservative	0.9% Sodium Azide
Isotype	IgG1
Purity	Protein A purified
Buffer	PBS (pH 7.4)
Product Description	
Host	Mouse
Gene ID	3133
Gene Symbol	HLA-E
Species	Human, Primate
Specificity/Sensitivity	This antibody (clone MEM-E/06) recognized native surface-expressed HLA-E, but not denaturated heavy chain of HLA-E. HLA-E belongs to the MHC Class I molecules (MHC Class Ib; nonclassical) and it is expressed on many types of the human cells. Some resultss showed that this antibody cross-reacts with some classical MHC Class I molecules (HLA-A3, -A11, -B7). However, others have confirmed that this antibody exhibits much broader cross-reactivity classical MHC Class I antigens, namely with HLA-A24, -A32, -B8, -B15, -B27, -B35, -B44, -B54, -C3, -C4, -C5, -C7.
Immunogen	Bacterially expressed recombinant full length protein refolded with beta2-microglobulin and peptide (Human).
Product Application Details	
Applications	Flow Cytometry, Immunohistochemistry, Immunohistochemistry-Paraffin, Immunoprecipitation, CyTOF-ready
Recommended Dilutions	Flow Cytometry 1-4 ug/ml, Immunohistochemistry 1:10 - 1:500, Immunoprecipitation 1:50, Immunohistochemistry-Paraffin 10 ug/ml, CyTOF-ready
Application Notes	This antibody is Cytof ready.

Images

Immunohistochemistry: MHC Class I Antibody (MEM-E/06) [NB500-307] - Staining of human spleen (paraffin sections) with anti-HLA-E (clone MEM-E/06).



Flow Cytometry: MHC Class I Antibody (MEM-E/06) [NB500-307] - Analysis using PE conjugate of NB500-307. A cell surface stain was performed on THP-1 cells with MHC Class I antibody (MEM-E/06) NB500-307 (blue) and a matched isotype control NBP2-27287 (orange). Cells were incubated in an antibody dilution of 1:100 for 20 minutes at room temperature. Both antibodies were conjugated to PE.





Novus Biologicals USA

10730 E. Briarwood Avenue
Centennial, CO 80112
USA
Phone: 303.730.1950
Toll Free: 1.888.506.6887
Fax: 303.730.1966
nb-customerservice@bio-techne.com

Bio-Techne Canada

21 Canmotor Ave
Toronto, ON M8Z 4E6
Canada
Phone: 905.827.6400
Toll Free: 855.668.8722
Fax: 905.827.6402
canada.inquires@bio-techne.com

Bio-Techne Ltd

19 Barton Lane
Abingdon Science Park
Abingdon, OX14 3NB, United Kingdom
Phone: (44) (0) 1235 529449
Free Phone: 0800 37 34 15
Fax: (44) (0) 1235 533420
info.EMEA@bio-techne.com

General Contact Information

www.novusbio.com
Technical Support: nb-technical@bio-techne.com
Orders: nb-customerservice@bio-techne.com
General: novus@novusbio.com

Products Related to NB500-307

HAF007	Goat anti-Mouse IgG Secondary Antibody [HRP]
NB720-B	Rabbit anti-Mouse IgG (H+L) Secondary Antibody [Biotin]
NBP1-97005-0.5mg	Mouse IgG1 Isotype Control (MG1)
NB500-307PE	MHC Class I Antibody (MEM-E/06) [PE]

Limitations

This product is for research use only and is not approved for use in humans or in clinical diagnosis. Primary Antibodies are guaranteed for 1 year from date of receipt.

For more information on our 100% guarantee, please visit www.novusbio.com/guarantee

Earn gift cards/discounts by submitting a review: www.novusbio.com/reviews/submit/NB500-307

Earn gift cards/discounts by submitting a publication using this product:
www.novusbio.com/publications

