

# Product Datasheet

## MHC Class I Antibody (MEM-E/08) [mFluor Violet 500 SE] NB500-305MFV500

Unit Size: 0.1 ml

Store at 4C in the dark.

[www.novusbio.com](http://www.novusbio.com)



[technical@novusbio.com](mailto:technical@novusbio.com)

Protocols, Publications, Related Products, Reviews, Research Tools and Images at:  
[www.novusbio.com/NB500-305MFV500](http://www.novusbio.com/NB500-305MFV500)

Updated 9/20/2023 v.20.1

Earn rewards for product  
reviews and publications.

Submit a publication at [www.novusbio.com/publications](http://www.novusbio.com/publications)

Submit a review at [www.novusbio.com/reviews/destination/NB500-305MFV500](http://www.novusbio.com/reviews/destination/NB500-305MFV500)



**NB500-305MFV500**

MHC Class I Antibody (MEM-E/08) [mFluor Violet 500 SE]

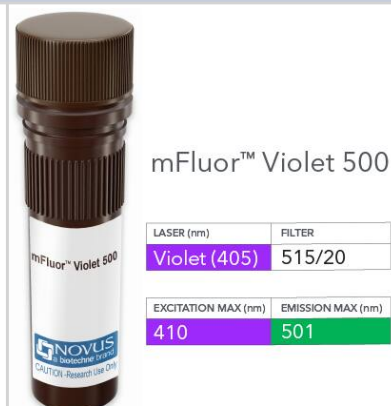
Product Information	
Unit Size	0.1 ml
Concentration	Please see the vial label for concentration. If unlisted please contact technical services.
Storage	Store at 4C in the dark.
Clonality	Monoclonal
Clone	MEM-E/08
Preservative	0.05% Sodium Azide
Isotype	IgG1
Conjugate	mFluor Violet 500 SE
Purity	Protein A purified
Buffer	50mM Sodium Borate

Product Description	
Host	Mouse
Gene ID	3133
Gene Symbol	HLA-E
Species	Human
Specificity/Sensitivity	This antibody (clone MEM-E/08) recognized native surface-expressed HLA-E, but not denaturated heavy chain of HLA-E. HLA-E belongs to the MHC Class I molecules (MHC Class Ib; nonclassical) and it is expressed on many types of the human cells. The results revealed that antibody is remarkably specific for HLA-E, only with weak cross-reactivity with following classical MHC Class I molecules (MHC Class Ia): HLA-A24, -B7, -B27, -B51, -B54, -C7.
Immunogen	Bacterially expressed recombinant HLA-E refolded with beta2-microglobulin and peptide.

Product Application Details	
Applications	Flow Cytometry, Immunoprecipitation, CyTOF-ready
Recommended Dilutions	Flow Cytometry, Immunoprecipitation, CyTOF-ready
Application Notes	Optimal dilution of this antibody should be experimentally determined.

**Images**

MHC Class I Antibody (MEM-E/08) [mFluor Violet 500 SE] - Vial of mFluor Violet 500 conjugated antibody. mFluor Violet 500 is optimally excited at 410 nm by the Violet laser (405 nm) and has an emission maximum of 501 nm.





### **Novus Biologicals USA**

10730 E. Briarwood Avenue  
Centennial, CO 80112  
USA  
Phone: 303.730.1950  
Toll Free: 1.888.506.6887  
Fax: 303.730.1966  
nb-customerservice@bio-techne.com

### **Bio-Techne Canada**

21 Canmotor Ave  
Toronto, ON M8Z 4E6  
Canada  
Phone: 905.827.6400  
Toll Free: 855.668.8722  
Fax: 905.827.6402  
canada.inquires@bio-techne.com

### **Bio-Techne Ltd**

19 Barton Lane  
Abingdon Science Park  
Abingdon, OX14 3NB, United Kingdom  
Phone: (44) (0) 1235 529449  
Free Phone: 0800 37 34 15  
Fax: (44) (0) 1235 533420  
info.EMEA@bio-techne.com

### **General Contact Information**

www.novusbio.com  
Technical Support: nb-technical@bio-techne.com  
Orders: nb-customerservice@bio-techne.com  
General: novus@novusbio.com

### **Products Related to NB500-305MFV500**

---

210-TA-005	TNF-alpha [Unconjugated]
H00003133-T01	MHC Class I 293T Cell Transient Overexpression Lysate
6507-IL-010/CF	IL-4 [Unconjugated]
285-IF-100	IFN-gamma [Unconjugated]

---

### **Limitations**

This product is for research use only and is not approved for use in humans or in clinical diagnosis. Primary Antibodies are guaranteed for 1 year from date of receipt.

For more information on our 100% guarantee, please visit [www.novusbio.com/guarantee](http://www.novusbio.com/guarantee)

Earn gift cards/discounts by submitting a review: [www.novusbio.com/reviews/submit/NB500-305MFV500](http://www.novusbio.com/reviews/submit/NB500-305MFV500)

Earn gift cards/discounts by submitting a publication using this product:  
[www.novusbio.com/publications](http://www.novusbio.com/publications)

