

# Product Datasheet

## CARD12 Antibody - BSA Free

### NB500-225

Unit Size: 0.1 mg

Store at 4C short term. Aliquot and store at -20C long term. Avoid freeze-thaw cycles.

[www.novusbio.com](http://www.novusbio.com)



[technical@novusbio.com](mailto:technical@novusbio.com)

#### Publications: 1

Protocols, Publications, Related Products, Reviews, Research Tools and Images at:  
[www.novusbio.com/NB500-225](http://www.novusbio.com/NB500-225)

Updated 10/23/2024 v.20.1

Earn rewards for product  
reviews and publications.

Submit a publication at [www.novusbio.com/publications](http://www.novusbio.com/publications)

Submit a review at [www.novusbio.com/reviews/destination/NB500-225](http://www.novusbio.com/reviews/destination/NB500-225)



**NB500-225**

CARD12 Antibody - BSA Free

Product Information	
Unit Size	0.1 mg
Concentration	1 mg/ml
Storage	Store at 4C short term. Aliquot and store at -20C long term. Avoid freeze-thaw cycles.
Clonality	Polyclonal
Preservative	0.02% Sodium Azide
Isotype	IgG
Purity	Immunogen affinity purified
Buffer	PBS

Product Description	
Host	Rabbit
Gene ID	58484
Gene Symbol	NLRC4
Species	Human
Reactivity Notes	This antibody reacts with human CLAN.
Specificity/Sensitivity	Reacts with the N terminus (MNFIKDNSRALIQRMGM) of the A and B isoforms of the human CLAN protein.
Immunogen	N terminus (MNFIKDNSRALIQRMGM) of the A and B isoforms of the human CLAN protein.

Product Application Details	
Applications	Western Blot
Recommended Dilutions	Western Blot 1:500-1:1000
Application Notes	This antibody is useful for western blot analysis where bands are seen around 110 kDa and 40 kDa representing isoforms A and B respectively.

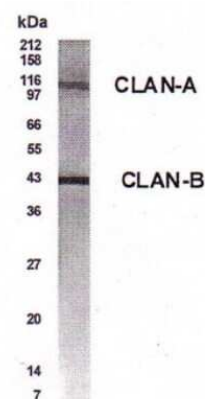


## Images

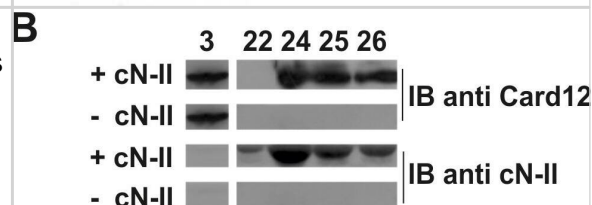
Western Blot: CARD12 Antibody [NB500-225] - Immunoblot analysis of cN-II and Ipaf (CARD12) protein expression in different human cell lines. Image collected and cropped by CiteAb from the following publication (<https://dx.plos.org/10.1371/journal.pone.0121525>) licensed under a CC-BY license.



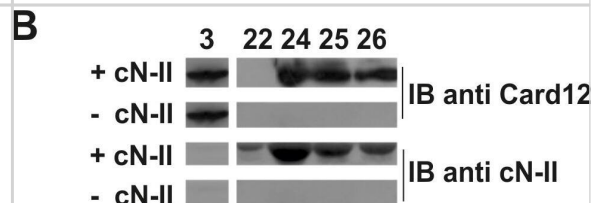
Western Blot: CARD12 Antibody [NB500-225] - Western Blot analysis of CLAN in lung lysate with anti-CLAN at a 1:500 dilution. Detects CLAN-A and CLAN-B isoforms.



In vitro interaction between cN-II and Ipaf B. After loading Ni-talon beads with *E. coli* "BL21(DE3)" crude extract without (■) or with cN-II (●), beads were washed and *E. coli* "BL21 Rosetta(DE3)" extracts containing Ipaf B were loaded. Elution buffer containing 250 mM imidazole was used from fraction 21 to detach His-tagged cN-II and elute proteins. A) proteins elution profile; B) immunoblotting with CARD12 and cN-II antibodies on elution fractions 3, 22, 24, 25 and 26 from chromatography.



Western Blot: CARD12 Antibody - BSA Free [NB500-225] - In vitro interaction between cN-II & Ipaf B. After loading Ni-talon beads with *E. coli* "BL21(DE3)" crude extract without (■) or with cN-II (●), beads were washed & *E. coli* "BL21 Rosetta(DE3)" extracts containing Ipaf B were loaded. Elution buffer containing 250 mM imidazole was used from fraction 21 to detach His-tagged cN-II & elute proteins. A) proteins elution profile; B) immunoblotting with CARD12 & cN-II antibodies on elution fractions 3, 22, 24, 25 & 26 from chromatography. Image collected & cropped by CiteAb from the following publication (<https://pubmed.ncbi.nlm.nih.gov/25811392>), licensed under a CC-BY license. Not internally tested by Novus Biologicals.



## Publications

Cividini F, Tozzi MG, Galli A et al. Cytosolic 5-Nucleotidase II Interacts with the Leucin Rich Repeat of NLR Family Member Ipaf. PLoS One. 2015-03-26 [PMID: 25811392] (WB, Human)



### **Novus Biologicals USA**

10730 E. Briarwood Avenue  
Centennial, CO 80112  
USA  
Phone: 303.730.1950  
Toll Free: 1.888.506.6887  
Fax: 303.730.1966  
nb-customerservice@bio-techne.com

### **Bio-Techne Canada**

21 Canmotor Ave  
Toronto, ON M8Z 4E6  
Canada  
Phone: 905.827.6400  
Toll Free: 855.668.8722  
Fax: 905.827.6402  
canada.inquires@bio-techne.com

### **Bio-Techne Ltd**

19 Barton Lane  
Abingdon Science Park  
Abingdon, OX14 3NB, United Kingdom  
Phone: (44) (0) 1235 529449  
Free Phone: 0800 37 34 15  
Fax: (44) (0) 1235 533420  
info.EMEA@bio-techne.com

### **General Contact Information**

[www.novusbio.com](http://www.novusbio.com)  
Technical Support: nb-technical@bio-techne.com  
Orders: nb-customerservice@bio-techne.com  
General: novus@novusbio.com

### **Products Related to NB500-225**

---

HAF008	Goat anti-Rabbit IgG Secondary Antibody [HRP]
NB7160	Goat anti-Rabbit IgG (H+L) Secondary Antibody [HRP]
NBP2-24891	Rabbit IgG Isotype Control
NB100-56142PEP	CARD12 Antibody Blocking Peptide

---

### **Limitations**

This product is for research use only and is not approved for use in humans or in clinical diagnosis. Primary Antibodies are guaranteed for 1 year from date of receipt.

For more information on our 100% guarantee, please visit [www.novusbio.com/guarantee](http://www.novusbio.com/guarantee)

Earn gift cards/discounts by submitting a review: [www.novusbio.com/reviews/submit/NB500-225](http://www.novusbio.com/reviews/submit/NB500-225)

Earn gift cards/discounts by submitting a publication using this product:  
[www.novusbio.com/publications](http://www.novusbio.com/publications)

