

Product Datasheet

CHAF1B Antibody (SS 24 1-68) NB500-211

Unit Size: 0.05 ml

Aliquot and store at -20C or -80C. Avoid freeze-thaw cycles.

www.novusbio.com



technical@novusbio.com

Publications: 2

Protocols, Publications, Related Products, Reviews, Research Tools and Images at:
www.novusbio.com/NB500-211

Updated 10/23/2024 v.20.1

Earn rewards for product
reviews and publications.

Submit a publication at www.novusbio.com/publications

Submit a review at www.novusbio.com/reviews/destination/NB500-211



NB500-211

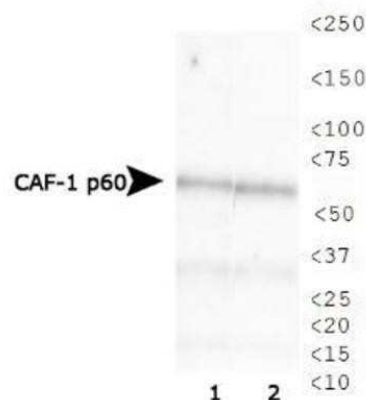
CHAF1B Antibody (SS 24 1-68)

| Product Information | |
|-----------------------------|--|
| Unit Size | 0.05 ml |
| Concentration | This product is unpurified. The exact concentration of antibody is not quantifiable. |
| Storage | Aliquot and store at -20C or -80C. Avoid freeze-thaw cycles. |
| Clonality | Monoclonal |
| Clone | SS 24 1-68 |
| Preservative | 0.1% Sodium Azide |
| Isotype | IgG1 |
| Purity | Unpurified |
| Buffer | Ascites |
| Target Molecular Weight | 60 kDa |
| Product Description | |
| Host | Mouse |
| Gene ID | 8208 |
| Gene Symbol | CHAF1B |
| Species | Human, Mouse, Primate |
| Immunogen | Recombinant human CHAF1B [UniProt# Q13112] |
| Product Application Details | |
| Applications | Western Blot, Immunocytochemistry/ Immunofluorescence, Immunoprecipitation |
| Recommended Dilutions | Western Blot 1:1000, Immunocytochemistry/ Immunofluorescence 1:10-1:2000, Immunoprecipitation 0.1-1 ug |
| Application Notes | This CHAF1B (SS 24 1-68) antibody is useful for Immunoprecipitation, Western blot and Immunocytochemistry/Immunofluorescence. In WB a band can be seen at ~60 kDa. The observed molecular weight of the protein may vary from the listed predicted molecular weight due to post translational modifications, post translation cleavages, relative charges, and other experimental factors. |

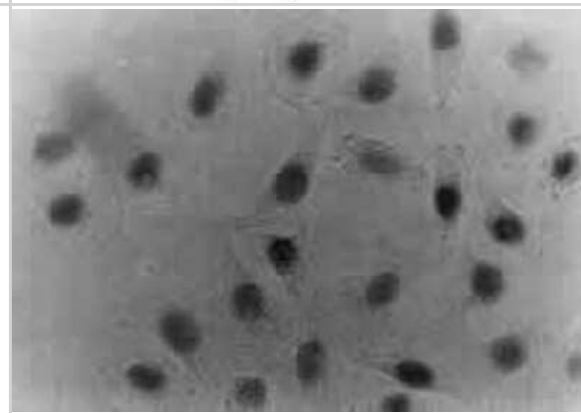


Images

Western Blot: CHAF1B Antibody (SS 24 1-68) [NB500-211] - Analysis of CAF-1 p60 expression in 1) HeLa and 2) Cos7 whole cell lysates using NB500-211.



Immunocytochemistry/Immunofluorescence: CHAF1B Antibody (SS 24 1-68) [NB500-211] - Immunocytochemical staining of CAF-1 p60 in HeLa cells (Smith and Stillman 1991).



Publications

Shibahara, K, Stillman, B. Replication-dependent marking of DNA by PCNA facilitates CAF-1-coupled inheritance of chromatin. *Cell*;96(4):575-85. 1999-02-19 [PMID: 10052459] (IP, Human)

Smith, S, Stillman, B. Immunological characterization of chromatin assembly factor I, a human cell factor required for chromatin assembly during DNA replication in vitro. *J Biol Chem*;266(18):12041-7. 1991-06-25 [PMID: 2050697] (ICC/IF, IP, WB, Human)

Procedures

Immunoprecipitation protocol specific for CAF-1 p60 Antibody (NB500-211)

CHAF1B Antibody (SS 24 1-68):

Procedure Guide for Monoclonal anti- CAF-1 p60 (clone 24)

Catalog# NB 500-211

Immunoprecipitation Procedure

- 1) Cells were prepared in 0.4-1% NP-40 lysis buffer.
- 2) After osmotic shock and nuclear extractions of the cells, use the following buffer: 25mM Tris, 150mM NaCl, 1mM EDTA, 1mM DTT, and 0.01% NP-40.
- 3) Clarify the extracts with two successive 5 minute clearing spins (in a microfuge).
- 4) Preclear the extracts with some protein G beads (~20 ul).
- 5) Incubate the extracts with ~ 0.1-1ug of anti-CAF-1p60-24 [NB 500-211]/ control antibody for 1-3 hours.
- 6) Spin the antibody/extract for 5 minutes.
- 7) Incubate the antibody/extract with protein G beads, rotating for 1-2 hours.
- 8) Wash the beads, twice, for 5 minutes, at low ionic strength [150mM NaCl] in 1ml volume (*Optional: wash again, twice, at high ionic strength [400mM NaCl]).
- 9) Resuspend the washed beads in Laemlli sample buffer and boil for 5 minutes.

NOTE:

- a. All steps for IP are performed at 4C.
- b. CAF-1p60 is phosphorylated and contains a PEST sequence. Therefore, it is recommended that protease and phosphatase inhibitors be added to all buffers.
- c. The protocol for crosslinking CAF-1p60 to protein G beads was obtained from the Harlow and Lane book, Using Antibodies.





Novus Biologicals USA

10730 E. Briarwood Avenue
Centennial, CO 80112
USA
Phone: 303.730.1950
Toll Free: 1.888.506.6887
Fax: 303.730.1966
nb-customerservice@bio-techne.com

Bio-Techne Canada

21 Canmotor Ave
Toronto, ON M8Z 4E6
Canada
Phone: 905.827.6400
Toll Free: 855.668.8722
Fax: 905.827.6402
canada.inquires@bio-techne.com

Bio-Techne Ltd

19 Barton Lane
Abingdon Science Park
Abingdon, OX14 3NB, United Kingdom
Phone: (44) (0) 1235 529449
Free Phone: 0800 37 34 15
Fax: (44) (0) 1235 533420
info.EMEA@bio-techne.com

General Contact Information

www.novusbio.com
Technical Support: nb-technical@bio-techne.com
Orders: nb-customerservice@bio-techne.com
General: novus@novusbio.com

Products Related to NB500-211

| | |
|------------------|---|
| NBL1-09140 | CHAF1B Overexpression Lysate |
| HAF007 | Goat anti-Mouse IgG Secondary Antibody [HRP] |
| NB720-B | Rabbit anti-Mouse IgG (H+L) Secondary Antibody [Biotin] |
| NBP1-97005-0.5mg | Mouse IgG1 Isotype Control (MG1) |

Limitations

This product is for research use only and is not approved for use in humans or in clinical diagnosis. Primary Antibodies are guaranteed for 1 year from date of receipt.

For more information on our 100% guarantee, please visit www.novusbio.com/guarantee

Earn gift cards/discounts by submitting a review: www.novusbio.com/reviews/submit/NB500-211

Earn gift cards/discounts by submitting a publication using this product:
www.novusbio.com/publications

