

Product Datasheet

CTCF Antibody NB500-177

Unit Size: 0.1 ml

Store at 4C. Do not freeze.

www.novusbio.com



technical@novusbio.com

Publications: 2

Protocols, Publications, Related Products, Reviews, Research Tools and Images at:
www.novusbio.com/NB500-177

Updated 10/23/2024 v.20.1

Earn rewards for product
reviews and publications.

Submit a publication at www.novusbio.com/publications

Submit a review at www.novusbio.com/reviews/destination/NB500-177



NB500-177

CTCF Antibody

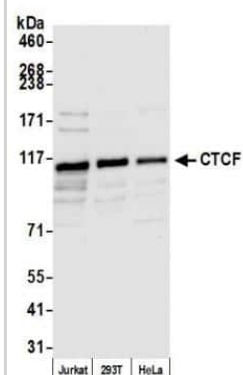
Product Information	
Unit Size	0.1 ml
Concentration	0.2 mg/ml
Storage	Store at 4C. Do not freeze.
Clonality	Polyclonal
Preservative	0.09% Sodium Azide
Isotype	IgG
Purity	Immunogen affinity purified
Buffer	TBS and 0.1% BSA

Product Description	
Host	Rabbit
Gene ID	10664
Gene Symbol	CTCF
Species	Human, Mouse
Immunogen	The immunogen recognized by this antibody maps to a region between residues 650 and 700 of human CCCTC-binding factor using the numbering given in entry NP_006556.1 (GeneID 10664).

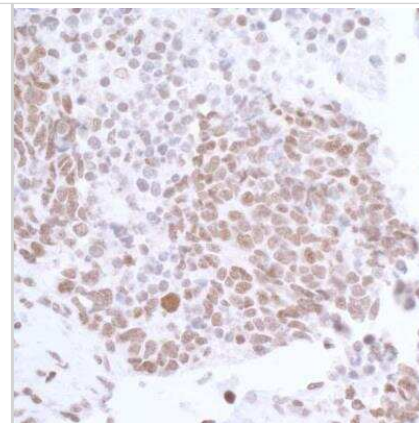
Product Application Details	
Applications	Western Blot, Immunohistochemistry, Immunohistochemistry-Paraffin, Immunoprecipitation, Chromatin Immunoprecipitation (ChIP)
Recommended Dilutions	Western Blot 1:2500-1:10000, Immunohistochemistry 1:500 - 1:2000, Immunoprecipitation 2-10 ug/mg lysate, Immunohistochemistry-Paraffin 1:500 - 1:2000, Chromatin Immunoprecipitation (ChIP) 1:10-1:500
Application Notes	Epitope retrieval with Tris-EDTA pH9.0 is recommended for FFPE tissue sections. Chip, WB, IP reactivity reported in (PMID: 24741094).

Images

Western Blot: CTCF Antibody [NB500-177] - Detection of human CTCF by western blot. Samples: Whole cell lysate (50 ug) from Jurkat, HEK293T, and HeLa cells prepared using NETN lysis buffer. Antibody: Affinity purified rabbit anti-CTCF antibody NB500-177 used for WB at 0.02 ug/ml. Detection: Chemiluminescence with an exposure time of 10 seconds.

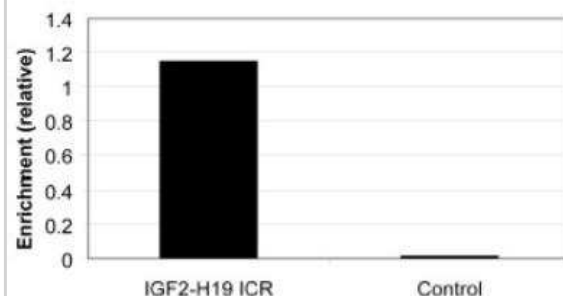


Immunohistochemistry-Paraffin: CTCF Antibody [NB500-177] - Section of human small cell lung cancer. Antibody: Affinity purified rabbit anti-CTCF antibody (NB500-177) used at 1:1000. Secondary: HRP-conjugated goat anti-rabbit IgG.

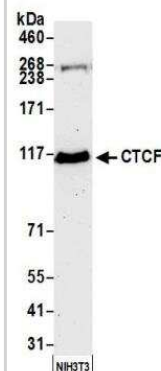


Chromatin Immunoprecipitation: CTCF Antibody [NB500-177] - Analysis of Human CTCF by Chromatin Immunoprecipitation (ChIP). Primary human fibroblasts from lung (5×10^7 cells) were cross-linked with formaldehyde, sonicated, and immunoprecipitated with 20 micrograms of rabbit anti-CTCF antibody NB500-177. The resulting ChIP DNA was quantified using real-time PCR with primers against the IGF2-H19 ICR or a control region in the HoxA cluster.

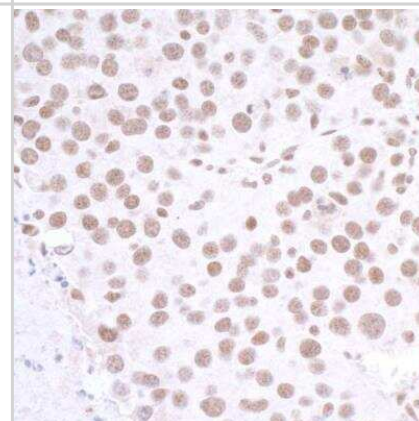
CTCF ChIP (Fibroblasts)



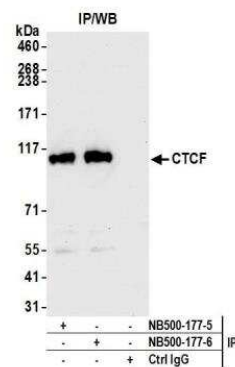
Western Blot: CTCF Antibody [NB500-177] - Detection of mouse CTCF by western blot. Samples: Whole cell lysate (50 ug) from NIH 3T3 cells prepared using NETN lysis buffer. Antibody: Affinity purified rabbit anti-CTCF antibody NB500-177 used for WB at 0.02 ug/ml. Detection: Chemiluminescence with an exposure time of 75 seconds.



Immunohistochemistry-Paraffin: CTCF Antibody [NB500-177] - Section of mouse renal cell carcinoma. Antibody: Affinity purified rabbit anti-CTCF antibody (NB500-177) used at 1:1000. Secondary: HRP-conjugated goat anti-rabbit IgG.



Immunoprecipitation: CTCF Antibody [NB500-177] - Detection of human CTCF by western blot of immunoprecipitates. Samples: Whole cell lysate (1.0 mg per IP reaction; 20% of IP loaded) from Jurkat cells prepared using NETN lysis buffer. Antibodies: Affinity purified rabbit anti-CTCF antibody NB500-177 (lot NB500-177-6) used for IP at 6 ug per reaction. CTCF was also immunoprecipitated by a previous lot of this antibody (lot NB500-177-5). For blotting immunoprecipitated CTCF, NB500-177 was used at 0.02 ug/ml. Detection: Chemiluminescence with an exposure time of 10 seconds.



Publications

Rivero-Hinojosa S, Pugacheva EM, Kang S et al. The combined action of CTCF and its testis-specific paralog BORIS is essential for spermatogenesis Nature Communications 2021-06-22 [PMID: 34158481] (Flow Cytometry)

Martinez FP, Cruz R, Lu F et al. CTCF Binding to the First Intron of the Major Immediate-Early (MIE) Gene of Human Cytomegalovirus (HCMV) Negatively Regulates MIE Gene Expression and HCMV Replication. J. Virol. 2014-04-16 [PMID: 24741094] (WB, Chemotaxis, IP, Human)



Novus Biologicals USA

10730 E. Briarwood Avenue
Centennial, CO 80112
USA
Phone: 303.730.1950
Toll Free: 1.888.506.6887
Fax: 303.730.1966
nb-customerservice@bio-techne.com

Bio-Techne Canada

21 Canmotor Ave
Toronto, ON M8Z 4E6
Canada
Phone: 905.827.6400
Toll Free: 855.668.8722
Fax: 905.827.6402
canada.inquires@bio-techne.com

Bio-Techne Ltd

19 Barton Lane
Abingdon Science Park
Abingdon, OX14 3NB, United Kingdom
Phone: (44) (0) 1235 529449
Free Phone: 0800 37 34 15
Fax: (44) (0) 1235 533420
info.EMEA@bio-techne.com

General Contact Information

www.novusbio.com
Technical Support: nb-technical@bio-techne.com
Orders: nb-customerservice@bio-techne.com
General: novus@novusbio.com

Products Related to NB500-177

HAF008	Goat anti-Rabbit IgG Secondary Antibody [HRP]
NB7160	Goat anti-Rabbit IgG (H+L) Secondary Antibody [HRP]
NBP2-24891	Rabbit IgG Isotype Control
H00010664-P01-2ug	Recombinant Human CTCF GST (N-Term) Protein

Limitations

This product is for research use only and is not approved for use in humans or in clinical diagnosis. Primary Antibodies are guaranteed for 1 year from date of receipt.

For more information on our 100% guarantee, please visit www.novusbio.com/guarantee

Earn gift cards/discounts by submitting a review: www.novusbio.com/reviews/submit/NB500-177

Earn gift cards/discounts by submitting a publication using this product:
www.novusbio.com/publications

