

Product Datasheet

KAP1 Antibody - BSA Free NB500-158

Unit Size: 100 ul

Store at 4C. Do not freeze.

www.novusbio.com



technical@novusbio.com

Reviews: 1 Publications: 19

Protocols, Publications, Related Products, Reviews, Research Tools and Images at:
www.novusbio.com/NB500-158

Updated 2/21/2025 v.20.1

**Earn rewards for product
reviews and publications.**

Submit a publication at www.novusbio.com/publications

Submit a review at www.novusbio.com/reviews/destination/NB500-158



NB500-158

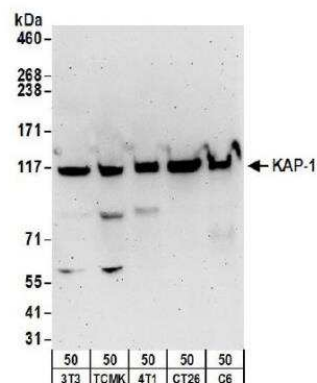
KAP1 Antibody - BSA Free

Product Information	
Unit Size	100 ul
Concentration	1.0 mg/ml
Storage	Store at 4C. Do not freeze.
Clonality	Polyclonal
Preservative	0.09% Sodium Azide
Isotype	IgG
Purity	Immunogen affinity purified
Buffer	Tris-Citrate/Phosphate (pH 7.0 - 8.0)
Product Description	
Description	This antibody can be used as the primary antibody in a PLA assay with the following as complementing antibodies:NB100-322, NB100-2350, NB100-2241
Host	Rabbit
Gene ID	10155
Gene Symbol	TRIM28
Species	Human, Mouse
Immunogen	The immunogen recognized by this antibody maps to a region between residue 1 and 50 of human Tripartite Motif-Containing 28 using the numbering given in entry NP_005753.1 (GeneID 10155).
Notes	This antibody can be used as the primary antibody in a PLA assay with the following as complementing antibodies:NB100-322, NB100-2350, NB100-2241
Product Application Details	
Applications	Western Blot, Immunocytochemistry/ Immunofluorescence, Immunohistochemistry, Immunohistochemistry-Paraffin, Immunoprecipitation, Chromatin Immunoprecipitation (ChIP)
Recommended Dilutions	Western Blot 1:2000-1:10000, Immunohistochemistry 1:500-1:2000, Immunocytochemistry/ Immunofluorescence 1:500- 1:2500, Immunoprecipitation 2-10 ug/mg of lysate, Immunohistochemistry-Paraffin 1:500-1:2000, Chromatin Immunoprecipitation (ChIP)
Application Notes	Use in Chromatin Immunoprecipitation reported in scientific literature (PMID:35031618) Epitope retrieval with citrate buffer pH6.0 is recommended for FFPE tissue sections. Permeabilization with Triton-X 100 is recommended for formaldehyde-fixed cells. KAP1 antibody validated for WB from a verified customer review.

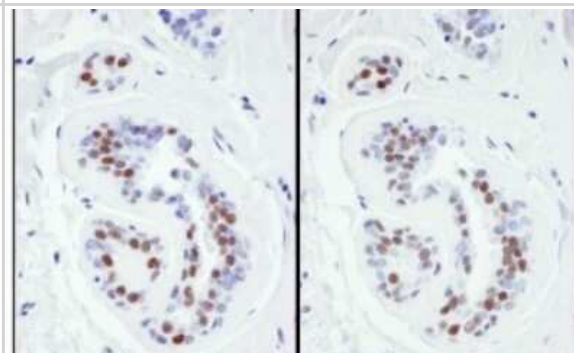


Images

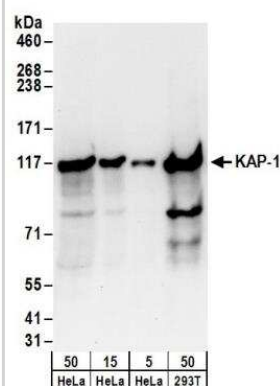
Western Blot: KAP1 Antibody [NB500-158] - Whole cell lysate (50 ug) from NIH 3T3, TCMK-1, 4T1, CT26.WT, and rat C6 cells. Antibodies: Affinity purified rabbit anti-KAP-1 antibody used for WB at 1 ug/ml. Detection: Chemiluminescence with an exposure time of 3 minutes.



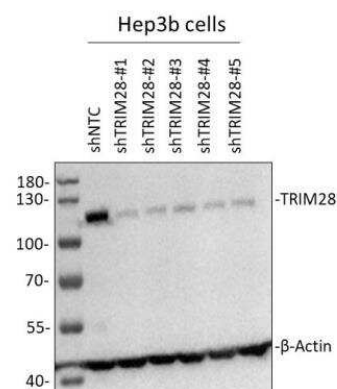
Immunohistochemistry-Paraffin: KAP1 Antibody [NB500-158] - FFPE sections of human breast carcinoma. KAP1 antibody Lot3 (left) and Lot2 (right) used at a dilution of 1:1000 (1 ug/mL). Detection: DAB.



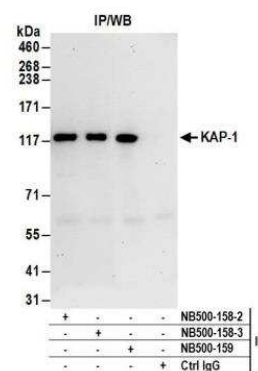
Western Blot: KAP1 Antibody [NB500-158] - Detection of Human KAP1 by Western blot. Whole cell lysate from HeLa (5, 15 and 50 ug), and 293T (50 ug) cells. KAP1 antibody at 0.1 ug/mL. Detection by chemiluminescence with an exposure time of 30 seconds.



Western Blot: KAP1 Antibody [NB500-158] - Hep3B human hepatocellular carcinoma cell line. 50 ug cell lysate per lane. 10% SDS-PAGE. KAP1 (TRIM28) antibody at 1:1000 dilution in 5% milk at 4C O/N. WB image submitted by a verified customer review.



Immunoprecipitation: KAP1 Antibody [NB500-158] - Detection of human KAP-1 by western blot of immunoprecipitates. Samples: Whole cell lysate (1 mg for IP; 20% of IP loaded) from HeLa cells. Antibodies: Affinity purified rabbit anti-KAP-1 antibody NB500-158 (lot NB500-158-3) used for IP at 6 ug/mg lysate. KAP-1 was also immunoprecipitated by a previous lot of this antibody (lot NB500-158-2) and rabbit anti-KAP-1 antibody NB500-159. For blotting immunoprecipitated KAP-1, NB500-158 was used at 1 ug/ml. Detection: Chemiluminescence with an exposure time of 30 seconds.



Publications

Takagi M, Hoshino A, Bousset K et al. Bone Marrow Failure and Immunodeficiency Associated with Human RAD50 Variants *Journal of clinical immunology* 2023-10-05 [PMID: 37794136]

Nayler S, Gatei M, Kozlov S et al. Embryonic Stem Cells/Induced Pluripotent Stem (iPS) Cells: Induced Pluripotent Stem Cells from Ataxia-Telangiectasia Recapitulate the Cellular Phenotype *Stem Cells Transl Med* 2012-12-01 [PMID: 23197857]

Yang Y, Lu H, Chen C et al. HIF-1 Interacts with TRIM28 and DNA-PK to release paused RNA polymerase II and activate target gene transcription in response to hypoxia *Nature communications* 2022-01-14 [PMID: 35031618] (IP, Chemotaxis, WB)

Chang J, Hwang HJ, Kim B et al. TRIM28 functions as a negative regulator of aggresome formation *Autophagy* 2021-04-12 [PMID: 33783327]

A-TWinnipeg: Pathogenesis of rare ATM missense mutation c.6200C>A with decreased protein expression and downstream signaling, early-onset dystonia, cancer, and life-threatening radiotoxicity. Nakamura K, Fike F, Haghighyegh S *Mol Genet Genomic Med* 2014-02-02 [PMID: 25077176] (WB, Human)

Batenburg NL, Thompson EL, Hendrickson EA, Zhu XD. Cockayne syndrome group B protein regulates DNA double-strand break repair and checkpoint activation. *EMBO J.* 2015-03-27 [PMID: 25820262] (WB, Mouse)

Puccini J, Shalini S, Voss AK et al. Loss of caspase-2 augments lymphomagenesis and enhances genomic instability in Atm-deficient mice. *Proc Natl Acad Sci U S A* 2013-12-03 [PMID: 24248351] (WB, Mouse)

Narayan V, Halada P, Hernychova L et al. A multiprotein binding interface in an intrinsically disordered region of the tumor suppressor protein interferon regulatory factor-1. *J Biol Chem* 2011-04-01 [PMID: 21245151]

Gilmore-Hebert M, Ramabhadran R, Stern DF et al. Interactions of ErbB4 and Kap1 connect the growth factor and DNA damage response pathways. *Mol Cancer Res* 2010-10-01 [PMID: 20858735]

Briers S, Crawford C, Bickmore WA et al. KRAB zinc-finger proteins localise to novel KAP1-containing foci that are adjacent to PML nuclear bodies. *J Cell Sci* 2009-04-01 [PMID: 19258395]

Tsuruma R, Ohbayashi N, Kamitani S et al. Physical and functional interactions between STAT3 and KAP1. *Oncogene* 2008-05-01 [PMID: 18037959]

Wang C, Rauscher FJ 3rd, Cress WD et al. Regulation of E2F1 function by the nuclear corepressor KAP1. *J Biol Chem* 2007-10-01 [PMID: 17704056]

More publications at <http://www.novusbio.com/NB500-158>



Novus Biologicals USA

10730 E. Briarwood Avenue
Centennial, CO 80112
USA
Phone: 303.730.1950
Toll Free: 1.888.506.6887
Fax: 303.730.1966
nb-customerservice@bio-techne.com

Bio-Techne Canada

21 Canmotor Ave
Toronto, ON M8Z 4E6
Canada
Phone: 905.827.6400
Toll Free: 855.668.8722
Fax: 905.827.6402
canada.inquires@bio-techne.com

Bio-Techne Ltd

19 Barton Lane
Abingdon Science Park
Abingdon, OX14 3NB, United Kingdom
Phone: (44) (0) 1235 529449
Free Phone: 0800 37 34 15
Fax: (44) (0) 1235 533420
info.EMEA@bio-techne.com

General Contact Information

www.novusbio.com
Technical Support: nb-technical@bio-
techne.com
Orders: nb-customerservice@bio-techne.com
General: novus@novusbio.com

Products Related to NB500-158

HAF008	Goat anti-Rabbit IgG Secondary Antibody [HRP]
NB7160	Goat anti-Rabbit IgG (H+L) Secondary Antibody [HRP]
NBP2-24891	Rabbit IgG Isotype Control
NBP2-22889	Recombinant Human KAP1 His Protein

Limitations

This product is for research use only and is not approved for use in humans or in clinical diagnosis. Primary Antibodies are guaranteed for 1 year from date of receipt.

For more information on our 100% guarantee, please visit www.novusbio.com/guarantee

Earn gift cards/discounts by submitting a review: www.novusbio.com/reviews/submit/NB500-158

Earn gift cards/discounts by submitting a publication using this product:
www.novusbio.com/publications

