

Product Datasheet

CDC2/CDK1 [p Tyr15] Antibody - Azide Free NB500-142

Unit Size: 0.1 ml

Store at -20C. Avoid freeze-thaw cycles.

www.novusbio.com



technical@novusbio.com

Reviews: 1 Publications: 2

Protocols, Publications, Related Products, Reviews, Research Tools and Images at:
www.novusbio.com/NB500-142

Updated 2/21/2025 v.20.1

**Earn rewards for product
reviews and publications.**

Submit a publication at www.novusbio.com/publications

Submit a review at www.novusbio.com/reviews/destination/NB500-142



NB500-142

CDC2/CDK1 [p Tyr15] Antibody - Azide Free

Product Information

Unit Size	0.1 ml
Concentration	Please see the vial label for concentration. If unlisted please contact technical services.
Storage	Store at -20C. Avoid freeze-thaw cycles.
Clonality	Polyclonal
Preservative	No Preservative
Isotype	IgG
Purity	Antigen Affinity-purified
Buffer	10mM HEPES (pH 7.5), 0.15M NaCl, 0.1 mg/ml BSA and 50% Glycerol
Target Molecular Weight	34 kDa

Product Description

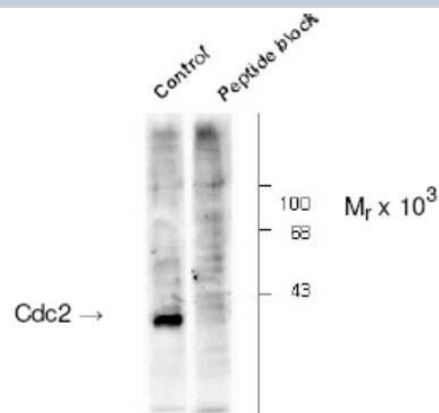
Host	Rabbit
Gene ID	983
Gene Symbol	CDK1
Species	Human, Mouse, Xenopus
Specificity/Sensitivity	Specific for endogenous levels of the ~34 kDa CDC2/CDK1 protein phosphorylated at Tyr15. Immunolabeling is completely eliminated by treatment with lambda-phosphatase.
Immunogen	Synthetic phospho-peptide corresponding to amino acid residues surrounding Tyr15 conjugated to KLH. Accession # P39951

Product Application Details

Applications	Western Blot
Recommended Dilutions	Western Blot 1:1000
Application Notes	NB500-142 can be used in Western blot where a band is seen at ~ 34 kDa, representing CDC2. Immunohistochemical analysis has not yet been determined.

Images

Western Blot: Cdc2 [p Tyr15] Antibody [NB500-142] - Western Blot. Western blot of SK-N-MC total cell extracts, treated with hydroxyurea for 22 hours to induce Tyr15 cdc2 phosphorylation. The labeling by the antibody to phospho Tyr15 cdc2 is specifically blocked by the Ser15 phosphopeptide used as antigen. The corresponding non-phosphopeptide did not block the immunolabeling (not shown).



Publications

Wieschaus EF Temperature-induced uncoupling of cell cycle regulators Dev Biol 2020-12-05 [PMID: 33278404]

Forester CM, Maddox J, Louis JV et al. Control of mitotic exit by PP2A regulation of Cdc25C and Cdk1. Proc Natl Acad Sci U S A. 2007-12-11 [PMID: 18056802]





Novus Biologicals USA

10730 E. Briarwood Avenue
Centennial, CO 80112
USA
Phone: 303.730.1950
Toll Free: 1.888.506.6887
Fax: 303.730.1966
nb-customerservice@bio-techne.com

Bio-Techne Canada

21 Canmotor Ave
Toronto, ON M8Z 4E6
Canada
Phone: 905.827.6400
Toll Free: 855.668.8722
Fax: 905.827.6402
canada.inquires@bio-techne.com

Bio-Techne Ltd

19 Barton Lane
Abingdon Science Park
Abingdon, OX14 3NB, United Kingdom
Phone: (44) (0) 1235 529449
Free Phone: 0800 37 34 15
Fax: (44) (0) 1235 533420
info.EMEA@bio-techne.com

General Contact Information

www.novusbio.com
Technical Support: nb-technical@bio-techne.com
Orders: nb-customerservice@bio-techne.com
General: novus@novusbio.com

Products Related to NB500-142

NBL1-08991	CDC2/CDK1 Overexpression Lysate
HAF008	Goat anti-Rabbit IgG Secondary Antibody [HRP]
NB7160	Goat anti-Rabbit IgG (H+L) Secondary Antibody [HRP]
NBP2-24891	Rabbit IgG Isotype Control

Limitations

This product is for research use only and is not approved for use in humans or in clinical diagnosis. Primary Antibodies are guaranteed for 1 year from date of receipt.

For more information on our 100% guarantee, please visit www.novusbio.com/guarantee

Earn gift cards/discounts by submitting a review: www.novusbio.com/reviews/submit/NB500-142

Earn gift cards/discounts by submitting a publication using this product:
www.novusbio.com/publications

