

# Product Datasheet

## LXR alpha/NR1H3 Antibody - BSA Free NB400-157

Unit Size: 0.1 ml

Store at 4C. Do not freeze.

[www.novusbio.com](http://www.novusbio.com)



[technical@novusbio.com](mailto:technical@novusbio.com)

**Reviews: 1 Publications: 10**

Protocols, Publications, Related Products, Reviews, Research Tools and Images at:  
[www.novusbio.com/NB400-157](http://www.novusbio.com/NB400-157)

Updated 4/13/2025 v.20.1

**Earn rewards for product  
reviews and publications.**

Submit a publication at [www.novusbio.com/publications](http://www.novusbio.com/publications)

Submit a review at [www.novusbio.com/reviews/destination/NB400-157](http://www.novusbio.com/reviews/destination/NB400-157)



**NB400-157**

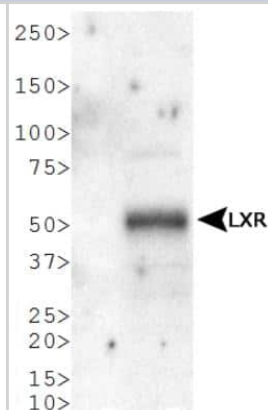
LXR alpha/NR1H3 Antibody - BSA Free

Product Information	
Unit Size	0.1 ml
Concentration	1.04 mg/ml
Storage	Store at 4C. Do not freeze.
Clonality	Polyclonal
Preservative	0.05% Sodium Azide
Isotype	IgG
Purity	Immunogen affinity purified
Buffer	Tris-Glycine and 0.15M NaCl
Product Description	
Host	Rabbit
Gene ID	10062
Gene Symbol	NR1H3
Species	Human, Mouse, Porcine, Primate
Reactivity Notes	Immunogen sequence has 92% identity to rat and 90% identity to chicken.
Immunogen	A synthetic peptide made to an internal portion of the human LXR alpha/NR1H3 protein sequence (between residues 50-150). [UniProt# Q13133]
Product Application Details	
Applications	Western Blot, Simple Western
Recommended Dilutions	Western Blot 0.5-2 ug/ml, Simple Western
Application Notes	This LXR alpha/NR1H3 antibody is useful for Western blot, where a band is observed at ~50 kDa.

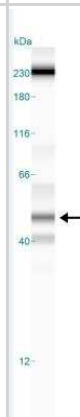


## Images

Western Blot: LXR alpha/NR1H3 Antibody [NB400-157] - WB detection of LXR in human liver.



Simple Western: LXR alpha/NR1H3 Antibody [NB400-157] - Simple Western lane view shows a ~49 kDa for LXR in human skeletal muscle tissue lysate under reducing conditions. Image from verified customer review.



## Publications

Yang R, Zhao Y, Gu Y et al. Isocitrate dehydrogenase 1 mutation enhances 24(S)-hydroxycholesterol production and alters cholesterol homeostasis in glioma *Oncogene* 2020-08-27 [PMID: 32855525] (WB)

Aye IL, Waddell BJ, Mark PJ, Keelan JA. Oxysterols inhibit differentiation and fusion of term primary trophoblasts by activating liver X receptors. *Placenta* 2011-02-01 [PMID: 21208656] (Human)

Mohammadi Abbas, Oshaghi Ebrahim Abbasi. Effect of garlic on lipid profile and expression of LXR alpha in intestine and liver of hypercholesterolemic mice. *J Diabetes Metab Disord.* 2014-01-29 [PMID: 24476027] (WB, Mouse)

Qiu G, Hill JS Atorvastatin inhibits ABCA1 expression and cholesterol efflux in THP-1 macrophages by an LXR-dependent pathway. *J Cardiovasc Pharmacol* 2008-04-01 [PMID: 18427282]

Yoon HS, Ju JH, Lee JE et al. The probiotic *Lactobacillus rhamnosus* BFE5264 and *Lactobacillus plantarum* NR74 promote cholesterol efflux and suppress inflammation in THP-1 cells *J Sci Food Agric* 2013-03-15 [PMID: 22806829] (WB, Human)

Yoon HS, Ju JH, Kim HN et al. Reduction in cholesterol absorption in Caco-2 cells through the down-regulation of Niemann-Pick C1-like 1 by the putative probiotic strains *Lactobacillus rhamnosus* BFE5264 and *Lactobacillus plantarum* NR74 from fermented foods *Int J Food Sci Nutr* 2012-07-20 [PMID: 22816655] (WB, Human)

Qiu, G et al. Atorvastatin decreases lipoprotein lipase and endothelial lipase expression in human THP-1 macrophages. *J Lipid Res*;48(10):2112-22. 2007-10-01 [PMID: 17644777] (WB, Human)

Zhang, C et al. NO-1886 suppressing atherosclerosis in high-fat-high-sucrose/high-cholesterol fed Bama minipigs is related to upregulating ATP-binding cassette transporter A1. *J Lipid Res.* 2006-01-01 [PMID: 16807312] (WB, Porcine)

Dang H, Liu Y, Pang W et al. Suppression of 2,3-Oxidosqualene Cyclase by High Fat Diet Contributes to Liver X Receptor- $\alpha$ -mediated Improvement of Hepatic Lipid Profile. *J Biol Chem*;284(10):6218-6226. 2009-01-01 [PMID: 19119143] (WB, Mouse, Human)

Zhang, C et al. Effects of NO-1886 on inflammation-associated cytokines in high-fat/high-sucrose/high-cholesterol diet-fed miniature pigs. *Eur J Pharmacol*;540(1-3):139-46. 2006-07-01 [PMID: 16730700] (WB, Porcine)



## Procedures

### Protocol specific for LXR-alpha Antibody (NB400-157)

LXR alpha/NR1H3 Antibody:

Western Blot Protocol

1. Perform SDS-PAGE (4-12%) on samples to be analyzed, loading 50 ug of total protein per lane.
2. Transfer proteins to Nitrocellulose according to the instructions provided by the manufacturer of the transfer apparatus.
3. Rinse membrane with dH<sub>2</sub>O and then stain the blot using ponceau S for 1-2 minutes to access the transfer of proteins onto the nitrocellulose membrane. Rinse the blot in water to remove excess stain and mark the lane locations and locations of molecular weight markers using a pencil.
4. Rinse the blot in TBS for approximately 5 minutes.
5. Block the membrane using 5% non-fat dry milk + 1% BSA in TBS for 2 hours at room temperature.
6. Rinse the membrane in dH<sub>2</sub>O and then wash the membrane in wash buffer [TBS + 0.1% Tween] 3 times for 10 minutes each.
7. Dilute the rabbit anti-LXR primary antibody (NB 400-157) in blocking buffer and incubate 30 minutes at room temperature on nutator and then overnight at 4 degrees Celsius.
8. Rinse the membrane in dH<sub>2</sub>O and then wash the membrane in wash buffer [TBS + 0.1% Tween] 3 times for 10 minutes each.
9. Apply the diluted rabbit-IgG HRP-conjugated secondary antibody in blocking buffer (as per manufacturer's instructions) and incubate 1 hour at room temperature.
10. Wash the blot in wash buffer [TBS + 0.1% Tween] 3 times for 10 minutes each (this step can be repeated as required to reduce background).
11. Apply the detection reagent of choice in accordance with the manufacturer's instructions (Pierce's ECL).

Note: Tween-20 can be added to the blocking or antibody dilution buffer at a final concentration of 0.05-0.2%, provided it does not interfere with antibody-antigen binding.





### **Novus Biologicals USA**

10730 E. Briarwood Avenue  
Centennial, CO 80112  
USA  
Phone: 303.730.1950  
Toll Free: 1.888.506.6887  
Fax: 303.730.1966  
nb-customerservice@bio-techne.com

### **Bio-Techne Canada**

21 Canmotor Ave  
Toronto, ON M8Z 4E6  
Canada  
Phone: 905.827.6400  
Toll Free: 855.668.8722  
Fax: 905.827.6402  
canada.inquires@bio-techne.com

### **Bio-Techne Ltd**

19 Barton Lane  
Abingdon Science Park  
Abingdon, OX14 3NB, United Kingdom  
Phone: (44) (0) 1235 529449  
Free Phone: 0800 37 34 15  
Fax: (44) (0) 1235 533420  
info.EMEA@bio-techne.com

### **General Contact Information**

[www.novusbio.com](http://www.novusbio.com)  
Technical Support: nb-technical@bio-techne.com  
Orders: nb-customerservice@bio-techne.com  
General: novus@novusbio.com

### **Products Related to NB400-157**

---

NB820-59232	Human Liver Whole Tissue Lysate (Adult Whole Normal)
NB400-157PEP	LXR alpha/NR1H3 Antibody Blocking Peptide
HAF008	Goat anti-Rabbit IgG Secondary Antibody [HRP]
NB7160	Goat anti-Rabbit IgG (H+L) Secondary Antibody [HRP]
NBP2-24891	Rabbit IgG Isotype Control

---

### **Limitations**

This product is for research use only and is not approved for use in humans or in clinical diagnosis. Primary Antibodies are guaranteed for 1 year from date of receipt.

For more information on our 100% guarantee, please visit [www.novusbio.com/guarantee](http://www.novusbio.com/guarantee)

Earn gift cards/discounts by submitting a review: [www.novusbio.com/reviews/submit/NB400-157](http://www.novusbio.com/reviews/submit/NB400-157)

Earn gift cards/discounts by submitting a publication using this product:  
[www.novusbio.com/publications](http://www.novusbio.com/publications)

