

# Product Datasheet

## CHREBP Antibody - BSA Free

### NB400-136

Unit Size: 0.1 ml

Store at 4C. Do not freeze.

[www.novusbio.com](http://www.novusbio.com)



[technical@novusbio.com](mailto:technical@novusbio.com)

**Publications: 6**

Protocols, Publications, Related Products, Reviews, Research Tools and Images at:  
[www.novusbio.com/NB400-136](http://www.novusbio.com/NB400-136)

Updated 2/21/2025 v.20.1

Earn rewards for product  
reviews and publications.

Submit a publication at [www.novusbio.com/publications](http://www.novusbio.com/publications)

Submit a review at [www.novusbio.com/reviews/destination/NB400-136](http://www.novusbio.com/reviews/destination/NB400-136)



**NB400-136**

CHREBP Antibody - BSA Free

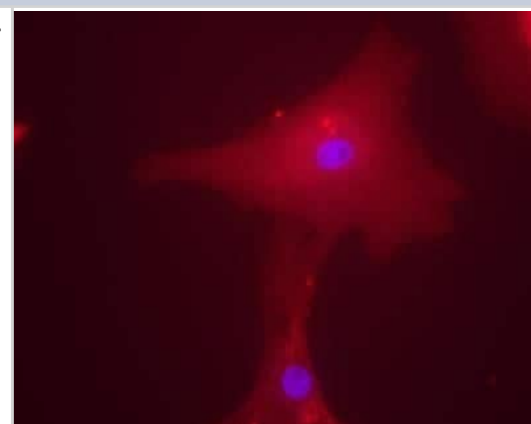
Product Information	
Unit Size	0.1 ml
Concentration	1 mg/ml
Storage	Store at 4C. Do not freeze.
Clonality	Polyclonal
Preservative	0.01% Sodium Azide
Isotype	IgG
Purity	Immunogen affinity purified
Buffer	Tris-Citrate/Phosphate (pH 7.0 - 8.0)

Product Description	
Host	Rabbit
Gene ID	51085
Gene Symbol	MLXIPL
Species	Human, Mouse
Reactivity Notes	Human and Mouse. Immunogen sequence has 87% identity with rat.
Immunogen	An internal synthetic peptide made to the human CHREBP protein sequence (between residues 50-150). [UniProt# Q9NP71, Isoform 1/Alpha]

Product Application Details	
Applications	Western Blot, Immunocytochemistry/ Immunofluorescence
Recommended Dilutions	Western Blot, Immunocytochemistry/ Immunofluorescence 1:100
Application Notes	This CHREBP antibody is useful for Immunocytochemistry/Immunofluorescence.

**Images**

Immunocytochemistry/Immunofluorescence: CHREBP Antibody [NB400-136] - Staining of a human hepatocyte using NB400-136. Overlay staining of ChREBP (rhodamine red) and DAPI nuclear staining (blue).



## Publications

Kaushik AK, Shojaie A, Panzitt K et al. Inhibition of the hexosamine biosynthetic pathway promotes castration-resistant prostate cancer. *Nat Commun.* 2016-05-19 [PMID: 27194471] (WB, ICC/IF, Human)

### Details:

This publication used the DL405 conjugated form of this antibody (NB400-136V)

Pedram A, Razandi M, Blumberg B, Levin ER. Membrane and nuclear estrogen receptor collaborate to suppress adipogenesis but not triglyceride content. *FASEB J.* 2015-09-15 [PMID: 26373802] (WB, Mouse)

Proszkowiec-Weglarz M, Humphrey BD, Richards MP. Molecular cloning and expression of chicken carbohydrate response element binding protein and Max-like protein X gene homologues. *Mol Cell Biochem* 2008-05-01 [PMID: 18373069]

Seyer P, Vallois D, Poitry-Yamate C et al. Hepatic glucose sensing is required to preserve beta cell glucose competence *J Clin Invest* 2013-03-15 [PMID: 23549084] (WB, Mouse)

Hesse D, Jaschke A, Kanzleiter T et al. GTPase ARFRP1 Is Essential for Normal Hepatic Glycogen Storage and Insulin-Like Growth Factor 1 Secretion *Mol Cell Biol* 2012-11-01 [PMID: 22927645] (WB, Mouse)

Metukuri MR, Zhang P, Basantani MK et al. ChREBP Mediates Glucose-Stimulated  $\beta$ -Cell Proliferation *Diabetes* 2012-08-01 [PMID: 22586588]



## Procedures

### Immunocytochemistry/Immunofluorescence protocol for CHREBP Antibody (NB400-136)

CHREBP Antibody:

Procedure for immunofluorescent staining

1. Wash human hepatocytes grown on cover-slips with PBS twice.
2. Fix cells with 10% buffered formalin for 25 minutes at room temperature.
3. Wash cells with PBS 3 times.
4. Incubate with 0.5% Triton X-100 in PBS for 5 minutes.
5. Wash cells with PBS 3 times.
6. Block with 1% BSA in PBS for 15 minutes at 37C.
7. Incubate with rabbit anti-ChREBP antibody (NB 400-136) 1:100-1:500 in PBS with 1% BSA for 30 minutes at 37C.
8. Wash cells with PBS 3 times.
9. Incubate with Goat anti-rabbit Alexa Fluor 568 antibody 1:2,000 in PBS with 1% BSA for 30 minutes at 37C.
10. Wash cells with PBS 3 times.
11. Mount by Vectashield mounting medium with DAPI.
12. Take pictures by using Rhodamine and DAPI filters.





### **Novus Biologicals USA**

10730 E. Briarwood Avenue  
Centennial, CO 80112  
USA  
Phone: 303.730.1950  
Toll Free: 1.888.506.6887  
Fax: 303.730.1966  
nb-customerservice@bio-techne.com

### **Bio-Techne Canada**

21 Canmotor Ave  
Toronto, ON M8Z 4E6  
Canada  
Phone: 905.827.6400  
Toll Free: 855.668.8722  
Fax: 905.827.6402  
canada.inquires@bio-techne.com

### **Bio-Techne Ltd**

19 Barton Lane  
Abingdon Science Park  
Abingdon, OX14 3NB, United Kingdom  
Phone: (44) (0) 1235 529449  
Free Phone: 0800 37 34 15  
Fax: (44) (0) 1235 533420  
info.EMEA@bio-techne.com

### **General Contact Information**

www.novusbio.com  
Technical Support: nb-technical@bio-techne.com  
Orders: nb-customerservice@bio-techne.com  
General: novus@novusbio.com

### **Products Related to NB400-136**

---

NB400-136PEP	CHREBP Antibody Blocking Peptide
HAF008	Goat anti-Rabbit IgG Secondary Antibody [HRP]
NB7160	Goat anti-Rabbit IgG (H+L) Secondary Antibody [HRP]
NBP2-24891	Rabbit IgG Isotype Control

---

### **Limitations**

This product is for research use only and is not approved for use in humans or in clinical diagnosis. Primary Antibodies are guaranteed for 1 year from date of receipt.

For more information on our 100% guarantee, please visit [www.novusbio.com/guarantee](http://www.novusbio.com/guarantee)

Earn gift cards/discounts by submitting a review: [www.novusbio.com/reviews/submit/NB400-136](http://www.novusbio.com/reviews/submit/NB400-136)

Earn gift cards/discounts by submitting a publication using this product:  
[www.novusbio.com/publications](http://www.novusbio.com/publications)

