

Product Datasheet

CrkL Antibody NB300-884-100ug

Unit Size: 100 ug

Store at -20C. Avoid freeze-thaw cycles.

www.novusbio.com



technical@novusbio.com

Publications: 1

Protocols, Publications, Related Products, Reviews, Research Tools and Images at:
www.novusbio.com/NB300-884

Updated 10/23/2024 v.20.1

Earn rewards for product
reviews and publications.

Submit a publication at www.novusbio.com/publications

Submit a review at www.novusbio.com/reviews/destination/NB300-884



NB300-884-100ug

CrkL Antibody

Product Information

Unit Size	100 ug
Concentration	0.5 mg/ml
Storage	Store at -20C. Avoid freeze-thaw cycles.
Clonality	Polyclonal
Preservative	0.02% Sodium Azide
Isotype	IgG
Purity	Immunogen affinity purified
Buffer	Tris saline (20 mM Tris pH 7.3, 150 mM NaCl), 0.5% BSA
Target Molecular Weight	34 kDa

Product Description

Host	Goat
Gene ID	1399
Gene Symbol	CRKL
Species	Human, Mouse
Immunogen	Peptide with sequence C-KIFDPQNPENE corresponding to C-Terminus according to NP_005198.1.

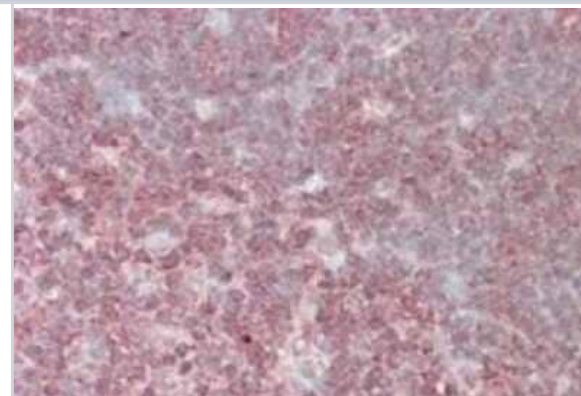
Product Application Details

Applications	Western Blot, Flow Cytometry, Immunocytochemistry/ Immunofluorescence, Immunohistochemistry, Immunohistochemistry-Paraffin, Peptide ELISA
Recommended Dilutions	Western Blot 0.1-1 ug/mL, Flow Cytometry 10 ug/ml, Immunohistochemistry, Immunocytochemistry/ Immunofluorescence 10 ug/ml, Immunohistochemistry-Paraffin 2.5 - 3.8 ug/mL, Peptide ELISA Detection limit 1:16000
Application Notes	WB: Approx 37kDa band observed in lysates of cell lines K562, Daudi and NIH3T3 (calculated MW of 33.8kDa according to Human NP_005198.1 and Mouse NP_031790.2). Primary incubation 1 hour at room temperature.

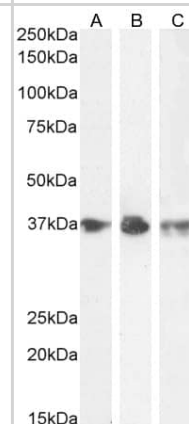


Images

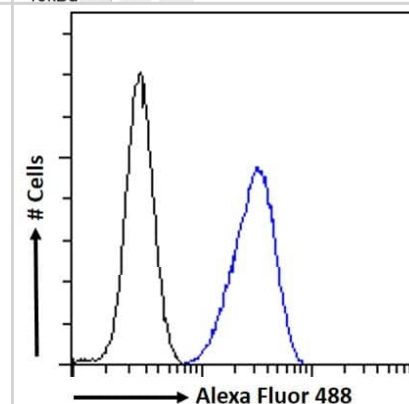
Immunohistochemistry-Paraffin: CrkL Antibody [NB300-884] - Paraffin embedded human thymus. Antibody at 3.8 ug/mL. Steamed antigen retrieval with citrate buffer pH 6, AP-staining.



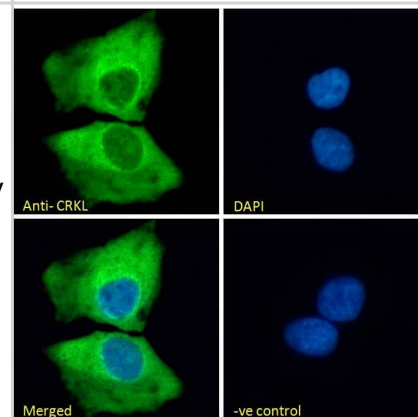
Western Blot: CrkL Antibody [NB300-884] - (0.1ug/ml) staining of K562 (A) and (1ug/ml) Daudi (B) and NIH3T3 (C) cell lysate (35ug protein in RIPA buffer). Detected by chemiluminescence.



Flow Cytometry: CrkL Antibody [NB300-884] - Flow cytometric analysis of paraformaldehyde fixed U2OS cells (blue line), permeabilized with 0.5% Triton. Primary incubation 1hr (10ug/ml) followed by Alexa Fluor 488 secondary antibody (1ug/ml). IgG control: Unimmunized goat IgG (black line) followed by Alexa Fluor 488 secondary antibody.



Immunocytochemistry/Immunofluorescence: CrkL Antibody [NB300-884] - Immunofluorescence analysis of paraformaldehyde fixed U2OS cells, permeabilized with 0.15% Triton. Primary incubation 1hr (10ug/ml) followed by Alexa Fluor 488 secondary antibody (2ug/ml), showing cytoplasmic staining. The nuclear stain is DAPI (blue). Negative control: Unimmunized goat IgG (10ug/ml) followed by Alexa Fluor 488 secondary antibody (2ug/ml).



Publications

Singer CF, Hudelist G, Lamm W et al. Active (p)CrkL is overexpressed in human malignancies: potential role as a surrogate parameter for therapeutic tyrosine kinase inhibition. Oncol Rep 2006-02-01 [PMID: 16391854]



Novus Biologicals USA

10730 E. Briarwood Avenue
Centennial, CO 80112
USA
Phone: 303.730.1950
Toll Free: 1.888.506.6887
Fax: 303.730.1966
nb-customerservice@bio-techne.com

Bio-Techne Canada

21 Canmotor Ave
Toronto, ON M8Z 4E6
Canada
Phone: 905.827.6400
Toll Free: 855.668.8722
Fax: 905.827.6402
canada.inquires@bio-techne.com

Bio-Techne Ltd

19 Barton Lane
Abingdon Science Park
Abingdon, OX14 3NB, United Kingdom
Phone: (44) (0) 1235 529449
Free Phone: 0800 37 34 15
Fax: (44) (0) 1235 533420
info.EMEA@bio-techne.com

General Contact Information

www.novusbio.com
Technical Support: nb-technical@bio-techne.com
Orders: nb-customerservice@bio-techne.com
General: novus@novusbio.com

Products Related to NB300-884-100ug

NB300-884PEP	CrkL Peptide
HAF017	Rabbit anti-Goat IgG Secondary Antibody [HRP (Horseradish Peroxidase)]
HAF109	Donkey anti-Goat IgG Secondary Antibody [HRP (Horseradish Peroxidase)]
NB410-28088-1mg	Goat IgG Isotype Control

Limitations

This product is for research use only and is not approved for use in humans or in clinical diagnosis. Primary Antibodies are guaranteed for 1 year from date of receipt.

For more information on our 100% guarantee, please visit www.novusbio.com/guarantee

Earn gift cards/discounts by submitting a review: www.novusbio.com/reviews/submit/NB300-884

Earn gift cards/discounts by submitting a publication using this product:
www.novusbio.com/publications



