

Product Datasheet

Pax6 Antibody NB300-750

Unit Size: 100 ug

Store at -20C. Avoid freeze-thaw cycles.

www.novusbio.com



technical@novusbio.com

Reviews: 4 **Publications: 5**

Protocols, Publications, Related Products, Reviews, Research Tools and Images at:
www.novusbio.com/NB300-750

Updated 10/23/2024 v.20.1

**Earn rewards for product
reviews and publications.**

Submit a publication at www.novusbio.com/publications

Submit a review at www.novusbio.com/reviews/destination/NB300-750



NB300-750

Pax6 Antibody

Product Information	
Unit Size	100 ug
Concentration	1 mg/ml
Storage	Store at -20C. Avoid freeze-thaw cycles.
Clonality	Polyclonal
Preservative	0.05% Sodium Azide
Isotype	IgG
Purity	Immunogen affinity purified
Buffer	PBS with 1 mg/ml BSA
Target Molecular Weight	47 kDa

Product Description	
Host	Rabbit
Gene ID	5080
Gene Symbol	PAX6
Species	Human, Mouse, Rat, Fish, Primate, Monkey, Sheep
Reactivity Notes	Fish reactivity reported in scientific literature (PMID: 29888788).
Marker	Neural Marker
Specificity/Sensitivity	Detects a ~47 kDa protein representing PAX6 (Schwann Cell Marker) from rat whole eye extracts and ovine retinal extracts.
Immunogen	Synthetic peptide corresponding to residues C R(267) E E K L R N Q R R Q A S N T P S H I(285) of mouse PAX6.

Product Application Details	
Applications	Western Blot, Immunocytochemistry/ Immunofluorescence, Immunohistochemistry, Immunoprecipitation
Recommended Dilutions	Western Blot 1:1000, Immunohistochemistry, Immunocytochemistry/ Immunofluorescence 1:50, Immunoprecipitation 5 ug
Application Notes	Use in Immunohistochemistry reported in scientific literature (PMID: 22837015).

Images

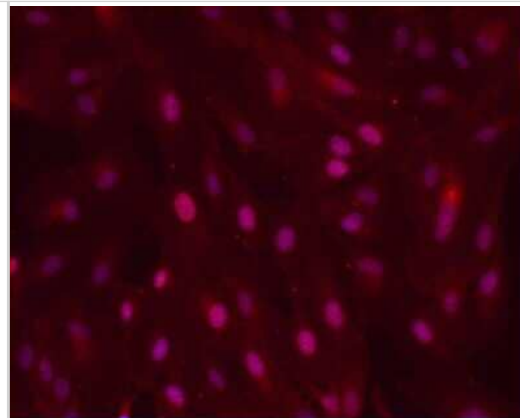
Western Blot: Pax6 Antibody [NB300-750] - Analysis of sheep retinal extract

Fig. 2

47 kDa

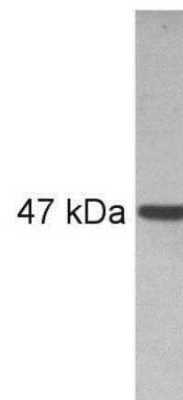


Immunocytochemistry/Immunofluorescence: Pax6 Antibody [NB300-750] - ARPE-19 monolayer on glass substrate. Fixative Methanol Blocking Goat Serum. Dilution 1:100. Incubation 1h @ RT. This image was submitted via customer Review.

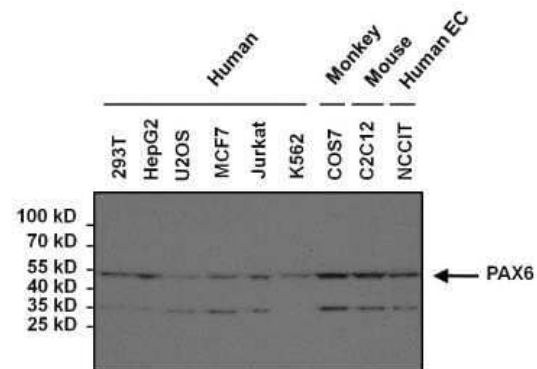


Western Blot: Pax6 Antibody [NB300-750] - Analysis of rat whole eye extract

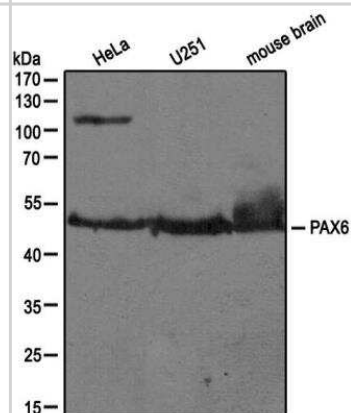
Fig. 1



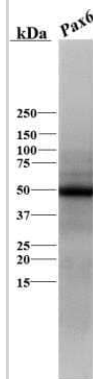
Western Blot: Pax6 Antibody [NB300-750] - Analysis of various human, mouse and non-human primate whole cell lysates.



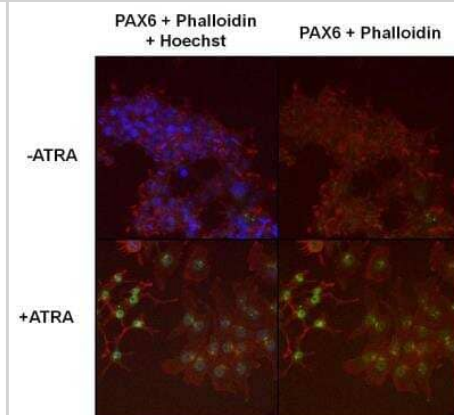
Western Blot: Pax6 Antibody [NB300-750] - Analysis of extracts from HeLa, U251 and mouse brain using PAX6 antibody (NB300-750, 1:100).



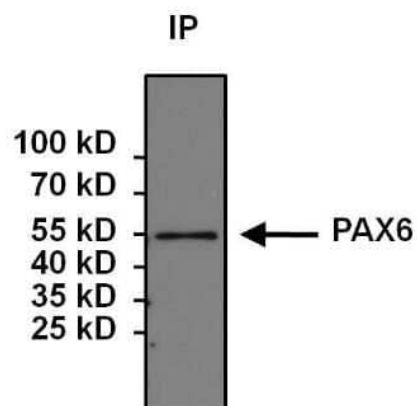
Western Blot: Pax6 Antibody [NB300-750] - Analysis of Pax6 in skate (*Leucoraja erinacea*) brain lysate using anti-Pax6 antibody. Image from verified customer review.



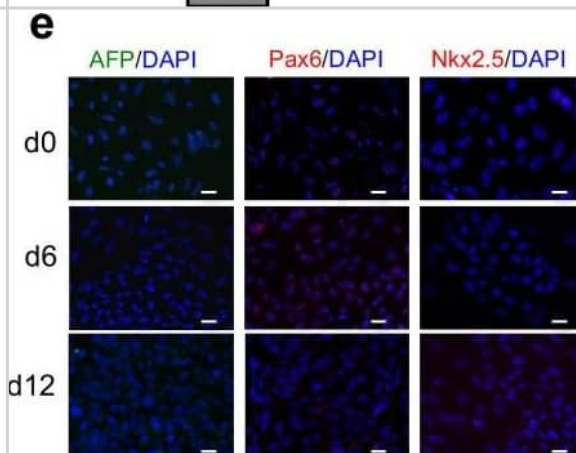
Immunocytochemistry/Immunofluorescence: Pax6 Antibody [NB300-750] - Formalin fixed cells were permeabilized with 0.1% Triton X-100 in TBS for 10 minutes at room temperature and blocked with 1% Blocker BSA for 15 minutes at room temperature. Cells were probed with a PAX6 polyclonal antibody at a dilution of 1:400 for 30 minutes at room temperature. F-Actin (red) was stained with DyLight 554 Phalloidin and nuclei were stained with Hoechst 33342 dye.



Immunoprecipitation: Pax6 Antibody [NB300-750] - Analysis of PAX6 was performed on 293T cells. Antigen: antibody complexes were formed by incubating 500ug whole cell lysate with 5ug of PAX6 polyclonal antibody overnight on a rocking platform at 4C. The immune complexes were captured on 50ul Protein A/G Plus Agarose, washed extensively, and eluted with 5X Lane Marker Reducing Sample Buffer. Samples were resolved on a 4-20% Tris-HCl polyacrylamide gel, transferred to a PVDF membrane, and blocked with 5% BSA/TBS-0.1% Tween for at least 1 hour. The membrane was probed with a PAX6 monoclonal antibody at a dilution of 1:1000 overnight rotating at 4C, washed in TBST, and probed with Clean-Blot IP Detection Reagent at a dilution of 1:1000 for at least one hour.



Immunocytochemistry/ Immunofluorescence: Pax6 Antibody [NB300-750] - Stepwise differentiation of human iPSCs towards renal progenitor cells (RPCs). (a) Schematic description of the two-stage protocol applied to iPSC-renal commitment. (b, c, d, e) Immunofluorescence of iPSCs (derived from retroviral transfected dermal fibroblasts) exposed to differentiating media. (b) The pluripotency markers SSEA4, TRA-1-81, Nanog, ME marker T(Bry) & IM marker Osr1. (c) IM & MM marker expression as *Wt1*, *Pax8*, *Pax2*, *Six2* & *Sall1*. (d) Renal progenitor markers *CD133*, *CD24*, *NCAM*, glomerular epithelial marker *Claudin1* & proximal tubular epithelial markers *AQP1*, *GGT1*. (e) Markers identifying endodermal AFP, ectodermal Pax6, & cardiac mesodermal *Nkx2.5* derivation. Nuclei are stained with DAPI (blue). Scale bars: 20 μ m (b, c, d, e). Image collected & cropped by CiteAb from the following publication (<https://www.nature.com/articles/srep08826>), licensed under a CC-BY license. Not internally tested by Novus Biologicals.



Publications

Robles DA, Boreland AJ, Pang ZP, Zahn JD A Cerebral Organoid Connectivity Apparatus to Model Neuronal Tract Circuitry Micromachines 2021-12-17 [PMID: 34945423] (IF/IHC, Human)

Suriano CM. Developmental Evidence for the Evolutionary Relationship of Cerebellum and Cerebellum-like Structures in an Elasmobranch Fish. Thesis. 2018-01-01 (WB)

Suriano CM, Bodznick D. Evidence for generative homology of cerebellum and cerebellum-like structures in an elasmobranch fish based on Pax6, Cbln1 and Grid2 expression J. Comp. Neurol. 2018-06-11 [PMID: 29888788] (Fish)

Imberti B, Tomasoni S, Ciampi O et al. Renal progenitors derived from human iPSCs engraft and restore function in a mouse model of acute kidney injury Sci Rep 2015-03-06 [PMID: 25744951] (ICC/IF, Human)

Pacal M, Bremner R. Mapping differentiation kinetics in the mouse retina reveals an extensive period of cell cycle protein expression in post-mitotic newborn neurons Dev Dyn 2012-10-01 [PMID: 22837015] (ICC/IF, IF/IHC, Mouse)





Novus Biologicals USA

10730 E. Briarwood Avenue
Centennial, CO 80112
USA
Phone: 303.730.1950
Toll Free: 1.888.506.6887
Fax: 303.730.1966
nb-customerservice@bio-techne.com

Bio-Techne Canada

21 Canmotor Ave
Toronto, ON M8Z 4E6
Canada
Phone: 905.827.6400
Toll Free: 855.668.8722
Fax: 905.827.6402
canada.inquires@bio-techne.com

Bio-Techne Ltd

19 Barton Lane
Abingdon Science Park
Abingdon, OX14 3NB, United Kingdom
Phone: (44) (0) 1235 529449
Free Phone: 0800 37 34 15
Fax: (44) (0) 1235 533420
info.EMEA@bio-techne.com

General Contact Information

www.novusbio.com
Technical Support: nb-technical@bio-techne.com
Orders: nb-customerservice@bio-techne.com
General: novus@novusbio.com

Products Related to NB300-750

HAF008	Goat anti-Rabbit IgG Secondary Antibody [HRP]
NB7160	Goat anti-Rabbit IgG (H+L) Secondary Antibody [HRP]
NBP2-24891	Rabbit IgG Isotype Control
H00005080-P01-10ug	Recombinant Human Pax6 GST (N-Term) Protein

Limitations

This product is for research use only and is not approved for use in humans or in clinical diagnosis. Primary Antibodies are guaranteed for 1 year from date of receipt.

For more information on our 100% guarantee, please visit www.novusbio.com/guarantee

Earn gift cards/discounts by submitting a review: www.novusbio.com/reviews/submit/NB300-750

Earn gift cards/discounts by submitting a publication using this product:
www.novusbio.com/publications

