

Product Datasheet

PDE1C Antibody NB300-672-0.05mg

Unit Size: 0.05 mg

Store at 4C short term. Aliquot and store at -20C long term. Avoid freeze-thaw cycles.

www.novusbio.com



technical@novusbio.com

Publications: 1

Protocols, Publications, Related Products, Reviews, Research Tools and Images at:
www.novusbio.com/NB300-672

Updated 9/9/2025 v.20.1

Earn rewards for product
reviews and publications.

Submit a publication at www.novusbio.com/publications

Submit a review at www.novusbio.com/reviews/destination/NB300-672



NB300-672-0.05mg

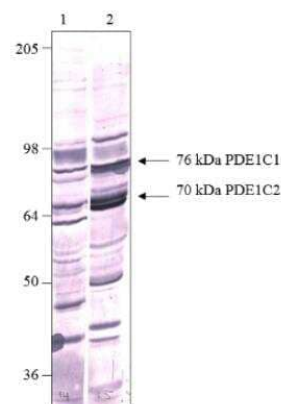
PDE1C Antibody

Product Information	
Unit Size	0.05 mg
Concentration	0.75 mg/ml
Storage	Store at 4C short term. Aliquot and store at -20C long term. Avoid freeze-thaw cycles.
Clonality	Polyclonal
Preservative	0.02% Sodium Azide
Isotype	IgG
Purity	Immunogen affinity purified
Buffer	Tris/Glycine buffer, pH 7.4-7.8, HEPES,BSA 0.5%, glycerol 30%.
Product Description	
Description	Novus Biologicals Rabbit PDE1C Antibody (NB300-672) is a polyclonal antibody validated for use in IHC, WB, ELISA, ICC/IF and IP. Anti-PDE1C Antibody: Cited in 1 publication. All Novus Biologicals antibodies are covered by our 100% guarantee.
Host	Rabbit
Gene ID	5137
Gene Symbol	PDE1C
Species	Human, Mouse, Rat
Specificity/Sensitivity	The does not cross react with PDE1A, PDE1B or other PDEs.
Immunogen	Synthetic peptide corresponding to unique amino acid sequence on PDE1C gene.
Product Application Details	
Applications	Western Blot, Immunohistochemistry-Paraffin, ELISA, Immunocytochemistry/Immunofluorescence, Immunohistochemistry, Immunoprecipitation
Recommended Dilutions	Western Blot 1:250-1:500, ELISA 1:10000, Immunohistochemistry 1:40-1:100, Immunocytochemistry/ Immunofluorescence 1:100, Immunoprecipitation 1:200, Immunohistochemistry-Paraffin 1:40-1:100
Application Notes	Immunoprecipitation and Western Blot: This antibody labels multiple bands in the 70-87 kDa range all believed to be various PDE1C variants. Optimal dilutions and concentrations should be determined by the end user.



Images

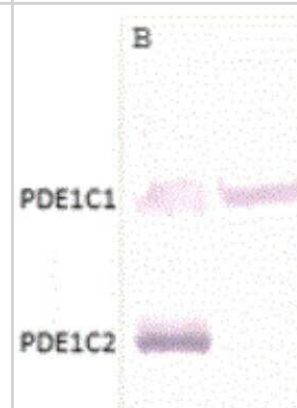
Western Blot: PDE1C Antibody [NB300-672] - Rat brain on SDS page. Aproximately 50-60 ug total rat brain homogenate/lane. 1:250 antibody dilution in DiluOBuffer. Lane 1. Rabbit, Lane 2: Rabbit



Immunohistochemistry: PDE1C Antibody [NB300-672] - Human ovarian medulla tissue. 1:1500 antibody dilution



Western Blot: PDE1C Antibody [NB300-672] - 1:500 antibody dilution in DiluOBuffer.



Publications

Ortiz-Capisano, MC et al. Calcium-dependent phosphodiesterase 1C inhibits renin release from isolated juxtaglomerular cells. *Am J Physiol Regulatory Integrative Comp Physiol* 297:R1469-R1476. 2009-01-01 [PMID: 19741056]



Novus Biologicals USA

10730 E. Briarwood Avenue
Centennial, CO 80112
USA
Phone: 303.730.1950
Toll Free: 1.888.506.6887
Fax: 303.730.1966
nb-customerservice@bio-techne.com

Bio-Techne Canada

21 Canmotor Ave
Toronto, ON M8Z 4E6
Canada
Phone: 905.827.6400
Toll Free: 855.668.8722
Fax: 905.827.6402
canada.inquires@bio-techne.com

Bio-Techne Ltd

19 Barton Lane
Abingdon Science Park
Abingdon, OX14 3NB, United Kingdom
Phone: (44) (0) 1235 529449
Free Phone: 0800 37 34 15
Fax: (44) (0) 1235 533420
info.EMEA@bio-techne.com

General Contact Information

www.novusbio.com
Technical Support: nb-technical@bio-techne.com
Orders: nb-customerservice@bio-techne.com
General: novus@novusbio.com

Products Related to NB300-672-0.05mg

NBP2-33376H	Blue Marker Antibody (6F4-F6) [HRP]
HAF008	Goat anti-Rabbit IgG Secondary Antibody [HRP]
NB7160	Goat anti-Rabbit IgG (H+L) Secondary Antibody [HRP]
NBP2-24891	Rabbit IgG Isotype Control

Limitations

This product is for research use only and is not approved for use in humans or in clinical diagnosis. Primary Antibodies are guaranteed for 1 year from date of receipt.

For more information on our 100% guarantee, please visit www.novusbio.com/guarantee

Earn gift cards/discounts by submitting a review: www.novusbio.com/reviews/submit/NB300-672

Earn gift cards/discounts by submitting a publication using this product:
www.novusbio.com/publications

