

# Product Datasheet

## PDE5A Antibody NB300-655-0.05mg

Unit Size: 0.05 mg

Store at 4C short term. Aliquot and store at -20C long term. Avoid freeze-thaw cycles.

[www.novusbio.com](http://www.novusbio.com)



[technical@novusbio.com](mailto:technical@novusbio.com)

Protocols, Publications, Related Products, Reviews, Research Tools and Images at:  
[www.novusbio.com/NB300-655](http://www.novusbio.com/NB300-655)

Updated 10/23/2024 v.20.1

Earn rewards for product  
reviews and publications.

Submit a publication at [www.novusbio.com/publications](http://www.novusbio.com/publications)

Submit a review at [www.novusbio.com/reviews/destination/NB300-655](http://www.novusbio.com/reviews/destination/NB300-655)



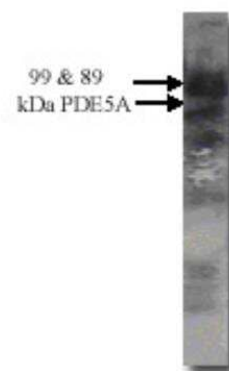
**NB300-655-0.05mg**

PDE5A Antibody

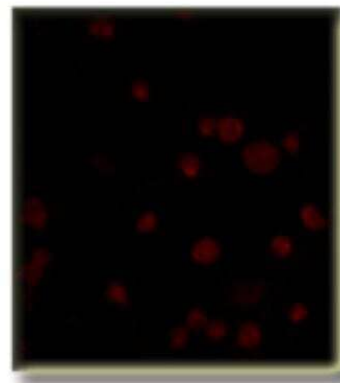
<b>Product Information</b>	
<b>Unit Size</b>	0.05 mg
<b>Concentration</b>	0.5 mg/ml
<b>Storage</b>	Store at 4C short term. Aliquot and store at -20C long term. Avoid freeze-thaw cycles.
<b>Clonality</b>	Polyclonal
<b>Preservative</b>	0.02% Sodium Azide
<b>Isotype</b>	IgG
<b>Purity</b>	Immunogen affinity purified
<b>Buffer</b>	Tris/Glycine buffer, pH 7.4-7.8, HEPES,BSA 0.5%, glycerol 30%.
<b>Product Description</b>	
<b>Host</b>	Rabbit
<b>Gene ID</b>	8654
<b>Gene Symbol</b>	PDE5A
<b>Species</b>	Human, Mouse, Rat, Chicken
<b>Specificity/Sensitivity</b>	This detects 99 and 89 kDa PDE5A proteins in various tissues.
<b>Immunogen</b>	Synthetic cyclic peptide (common to all PDE5A variants) (Rat).
<b>Product Application Details</b>	
<b>Applications</b>	Western Blot, ELISA, Immunocytochemistry/ Immunofluorescence, Immunohistochemistry, Immunoprecipitation
<b>Recommended Dilutions</b>	Western Blot 1:500, ELISA, Immunohistochemistry, Immunocytochemistry/ Immunofluorescence 1:10-1:500, Immunoprecipitation 1:250
<b>Application Notes</b>	This antibody can be used in Immunoprecipitation and Western Blot. In Western Blot a 89 and 99 kDa bands are seen (predicted MW is 105kDa). Recommended Starting Dilutions*: IP: 1/250 WB: 1/500 Not tested in other applications. *Optimal dilutions should be determined by the end user.

**Images**

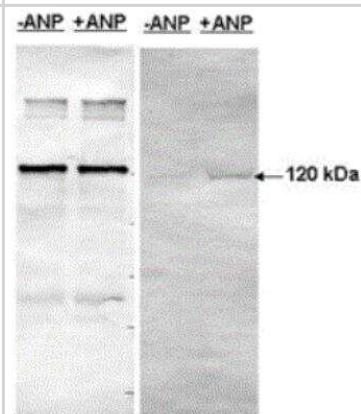
Western Blot: PDE5A Antibody [NB300-655] - 50 ug of rat lung Homogenate.



Immunocytochemistry/Immunofluorescence: PDE5A Antibody [NB300-655] - Cells expressing PDE5 with antibody.



Western Blot: PDE5A Antibody [NB300-655] - Antibody dilution 1:500 in diluObuffer





### **Novus Biologicals USA**

10730 E. Briarwood Avenue  
Centennial, CO 80112  
USA  
Phone: 303.730.1950  
Toll Free: 1.888.506.6887  
Fax: 303.730.1966  
nb-customerservice@bio-techne.com

### **Bio-Techne Canada**

21 Canmotor Ave  
Toronto, ON M8Z 4E6  
Canada  
Phone: 905.827.6400  
Toll Free: 855.668.8722  
Fax: 905.827.6402  
canada.inquires@bio-techne.com

### **Bio-Techne Ltd**

19 Barton Lane  
Abingdon Science Park  
Abingdon, OX14 3NB, United Kingdom  
Phone: (44) (0) 1235 529449  
Free Phone: 0800 37 34 15  
Fax: (44) (0) 1235 533420  
info.EMEA@bio-techne.com

### **General Contact Information**

www.novusbio.com  
Technical Support: nb-technical@bio-techne.com  
Orders: nb-customerservice@bio-techne.com  
General: novus@novusbio.com

### **Products Related to NB300-655-0.05mg**

---

NBL1-14225	PDE5A Overexpression Lysate
HAF008	Goat anti-Rabbit IgG Secondary Antibody [HRP]
NB7160	Goat anti-Rabbit IgG (H+L) Secondary Antibody [HRP]
NBP2-24891	Rabbit IgG Isotype Control

---

### **Limitations**

This product is for research use only and is not approved for use in humans or in clinical diagnosis. Primary Antibodies are guaranteed for 1 year from date of receipt.

For more information on our 100% guarantee, please visit [www.novusbio.com/guarantee](http://www.novusbio.com/guarantee)

Earn gift cards/discounts by submitting a review: [www.novusbio.com/reviews/submit/NB300-655](http://www.novusbio.com/reviews/submit/NB300-655)

Earn gift cards/discounts by submitting a publication using this product:  
[www.novusbio.com/publications](http://www.novusbio.com/publications)

