

Product Datasheet

PDE8B Antibody **NB300-644-0.05mg**

Unit Size: 0.05 mg

Store at 4C short term. Aliquot and store at -20C long term. Avoid freeze-thaw cycles.

www.novusbio.com



technical@novusbio.com

Protocols, Publications, Related Products, Reviews, Research Tools and Images at:
www.novusbio.com/NB300-644

Updated 9/9/2025 v.20.1

Earn rewards for product
reviews and publications.

Submit a publication at www.novusbio.com/publications

Submit a review at www.novusbio.com/reviews/destination/NB300-644



NB300-644-0.05mg

PDE8B Antibody

Product Information	
Unit Size	0.05 mg
Concentration	0.5 mg/ml
Storage	Store at 4C short term. Aliquot and store at -20C long term. Avoid freeze-thaw cycles.
Clonality	Polyclonal
Preservative	0.02% Sodium Azide
Isotype	IgG
Purity	Immunogen affinity purified
Buffer	Tris/Glycine buffer, pH 7.4-7.8, HEPES,BSA 0.5%, glycerol 30%.

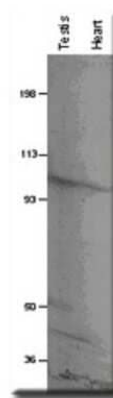
Product Description	
Description	Novus Biologicals Rabbit PDE8B Antibody (NB300-644) is a polyclonal antibody validated for use in IHC, WB, ELISA, ICC/IF and IP. All Novus Biologicals antibodies are covered by our 100% guarantee.
Host	Rabbit
Gene ID	8622
Gene Symbol	PDE8B
Species	Human, Mouse, Rat, Bovine, Monkey
Specificity/Sensitivity	This has no cross-reactivity against PDE8A protein or any other PDE family members.
Immunogen	Synthetic cyclic peptide common to all PDE8B variants.

Product Application Details	
Applications	Western Blot, ELISA, Immunocytochemistry/ Immunofluorescence, Immunohistochemistry, Immunoprecipitation
Recommended Dilutions	Western Blot 1:100-1:2000, ELISA 1:10000, Immunohistochemistry 1:200, Immunocytochemistry/ Immunofluorescence 1:200, Immunoprecipitation 1:10-1:500
Application Notes	Immunoprecipitation and Western Blot Detects a band of approximately 98-100 kDa. Optimal dilutions/concentrations should be determined by the end user.

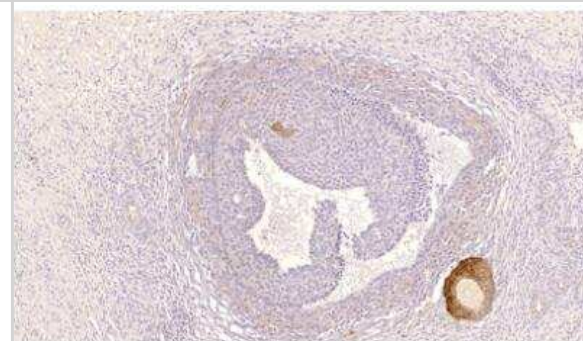


Images

Western Blot: PDE8B Antibody [NB300-644] - Rat testis and heart membranes. Antibody (NB300-644) dilution 1:500. Molecular weight marker positions are marked on the left.



PDE8B Antibody [NB300-644] - Human ovarian medulla tissue. 1:2000 antibody dilution Image courtesy of Steven S. Petersen, MD, PHD Copenhagen University Hospital, Denmark.



**Novus Biologicals USA**

10730 E. Briarwood Avenue
Centennial, CO 80112
USA
Phone: 303.730.1950
Toll Free: 1.888.506.6887
Fax: 303.730.1966
nb-customerservice@bio-techne.com

Bio-Techne Canada

21 Canmotor Ave
Toronto, ON M8Z 4E6
Canada
Phone: 905.827.6400
Toll Free: 855.668.8722
Fax: 905.827.6402
canada.inquires@bio-techne.com

Bio-Techne Ltd

19 Barton Lane
Abingdon Science Park
Abingdon, OX14 3NB, United Kingdom
Phone: (44) (0) 1235 529449
Free Phone: 0800 37 34 15
Fax: (44) (0) 1235 533420
info.EMEA@bio-techne.com

General Contact Information

www.novusbio.com
Technical Support: nb-technical@bio-techne.com
Orders: nb-customerservice@bio-techne.com
General: novus@novusbio.com

Products Related to NB300-644-0.05mg

HAF008	Goat anti-Rabbit IgG Secondary Antibody [HRP]
NB7160	Goat anti-Rabbit IgG (H+L) Secondary Antibody [HRP]
NBP2-24891	Rabbit IgG Isotype Control
NBP1-86280PEP	PDE8B Recombinant Protein Antigen

Limitations

This product is for research use only and is not approved for use in humans or in clinical diagnosis. Primary Antibodies are guaranteed for 1 year from date of receipt.

For more information on our 100% guarantee, please visit www.novusbio.com/guarantee

Earn gift cards/discounts by submitting a review: www.novusbio.com/reviews/submit/NB300-644

Earn gift cards/discounts by submitting a publication using this product:
www.novusbio.com/publications

