

# Product Datasheet

## PSMA1 Antibody NB300-624

Unit Size: 100ug

Store at -20C. Avoid freeze-thaw cycles.

[www.novusbio.com](http://www.novusbio.com)



[technical@novusbio.com](mailto:technical@novusbio.com)

### Publications: 2

Protocols, Publications, Related Products, Reviews, Research Tools and Images at:  
[www.novusbio.com/NB300-624](http://www.novusbio.com/NB300-624)

Updated 9/9/2025 v.20.1

Earn rewards for product  
reviews and publications.

Submit a publication at [www.novusbio.com/publications](http://www.novusbio.com/publications)

Submit a review at [www.novusbio.com/reviews/destination/NB300-624](http://www.novusbio.com/reviews/destination/NB300-624)



**NB300-624****PSMA1 Antibody****Product Information**

<b>Unit Size</b>	100ug
<b>Concentration</b>	1 mg/ml
<b>Storage</b>	Store at -20C. Avoid freeze-thaw cycles.
<b>Clonality</b>	Polyclonal
<b>Preservative</b>	0.05% Sodium Azide
<b>Isotype</b>	IgG
<b>Purity</b>	Immunogen affinity purified
<b>Buffer</b>	PBS with 1 mg/ml BSA
<b>Target Molecular Weight</b>	30 kDa

**Product Description**

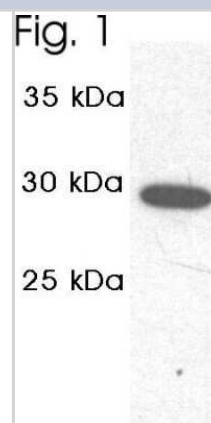
<b>Description</b>	Novus Biologicals Rabbit PSMA1 Antibody (NB300-624) is a polyclonal antibody validated for use in WB. Anti-PSMA1 Antibody: Cited in 2 publications. All Novus Biologicals antibodies are covered by our 100% guarantee.
<b>Host</b>	Rabbit
<b>Gene ID</b>	5682
<b>Gene Symbol</b>	PSMA1
<b>Species</b>	Human, Mouse, Rat, Canine, Chicken, Chinese Hamster
<b>Specificity/Sensitivity</b>	Detects proteasome 20S C2 subunit.
<b>Immunogen</b>	Synthetic Peptide: C P(249) A D E P A E K A D E P M E H(263)

**Product Application Details**

<b>Applications</b>	Western Blot
<b>Recommended Dilutions</b>	Western Blot 1 ug/ml

**Images**

Western Blot: Proteasome 20S C2 Antibody [NB300-624] - Analysis of CHO cell extract.

**Publications**

Laporte D, Salin B, Daignan-Fornier B et al. Reversible cytoplasmic localization of the proteasome in quiescent yeast cells. *J Cell Biol*;181(5):737-745. 2008-01-01 [PMID: 18504300]

Vishnyakova, T G, Kurler, R, Bocharov, A V et al. CLA-1 its splicing variant CLA-2 mediate bacterial adhesion cytosolic bacterial invasion in mammalian cells. 103, 16888-16893. 2006-01-01 [PMID: 17071747]



### **Novus Biologicals USA**

10730 E. Briarwood Avenue  
Centennial, CO 80112  
USA  
Phone: 303.730.1950  
Toll Free: 1.888.506.6887  
Fax: 303.730.1966  
nb-customerservice@bio-techne.com

### **Bio-Techne Canada**

21 Canmotor Ave  
Toronto, ON M8Z 4E6  
Canada  
Phone: 905.827.6400  
Toll Free: 855.668.8722  
Fax: 905.827.6402  
canada.inquires@bio-techne.com

### **Bio-Techne Ltd**

19 Barton Lane  
Abingdon Science Park  
Abingdon, OX14 3NB, United Kingdom  
Phone: (44) (0) 1235 529449  
Free Phone: 0800 37 34 15  
Fax: (44) (0) 1235 533420  
info.EMEA@bio-techne.com

### **General Contact Information**

www.novusbio.com  
Technical Support: nb-technical@bio-techne.com  
Orders: nb-customerservice@bio-techne.com  
General: novus@novusbio.com

### **Products Related to NB300-624**

---

HAF008	Goat anti-Rabbit IgG Secondary Antibody [HRP]
NB7160	Goat anti-Rabbit IgG (H+L) Secondary Antibody [HRP]
NBP2-24891	Rabbit IgG Isotype Control
NBP1-72482-100ug	Recombinant Human PSMA1 His Protein

---

### **Limitations**

This product is for research use only and is not approved for use in humans or in clinical diagnosis. Primary Antibodies are guaranteed for 1 year from date of receipt.

For more information on our 100% guarantee, please visit [www.novusbio.com/guarantee](http://www.novusbio.com/guarantee)

Earn gift cards/discounts by submitting a review: [www.novusbio.com/reviews/submit/NB300-624](http://www.novusbio.com/reviews/submit/NB300-624)

Earn gift cards/discounts by submitting a publication using this product:  
[www.novusbio.com/publications](http://www.novusbio.com/publications)

