

# Product Datasheet

## Cytochrome P450 1A1 Antibody - BSA Free NB300-608

Unit Size: 100uL

Store at -20C. Avoid freeze-thaw cycles.

[www.novusbio.com](http://www.novusbio.com)



[technical@novusbio.com](mailto:technical@novusbio.com)

Protocols, Publications, Related Products, Reviews, Research Tools and Images at:  
[www.novusbio.com/NB300-608](http://www.novusbio.com/NB300-608)

Updated 5/15/2025 v.20.1

Earn rewards for product  
reviews and publications.

Submit a publication at [www.novusbio.com/publications](http://www.novusbio.com/publications)

Submit a review at [www.novusbio.com/reviews/destination/NB300-608](http://www.novusbio.com/reviews/destination/NB300-608)



**NB300-608****Cytochrome P450 1A1 Antibody - BSA Free**

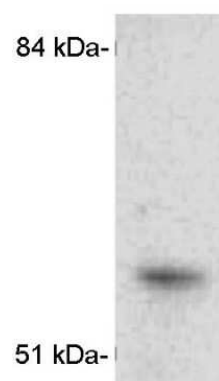
<b>Product Information</b>	
<b>Unit Size</b>	100uL
<b>Concentration</b>	Concentrations vary lot to lot. See vial label for concentration. If unlisted please contact technical services.
<b>Storage</b>	Store at -20C. Avoid freeze-thaw cycles.
<b>Clonality</b>	Polyclonal
<b>Preservative</b>	0.05% Sodium Azide
<b>Isotype</b>	IgG
<b>Purity</b>	Ammonium sulfate precipitation
<b>Buffer</b>	PBS

<b>Product Description</b>	
<b>Host</b>	Rabbit
<b>Gene ID</b>	1543
<b>Gene Symbol</b>	CYP1A1
<b>Species</b>	Human
<b>Specificity/Sensitivity</b>	Detects Cytochrome P450 1A1 from human cells. This detects, to a lesser extent, other P450 isoforms.
<b>Immunogen</b>	Purified, His-tagged, full length human P450 1A1 fusion protein.

<b>Product Application Details</b>	
<b>Applications</b>	Western Blot, Immunocytochemistry/ Immunofluorescence
<b>Recommended Dilutions</b>	Western Blot 1:500, Immunocytochemistry/ Immunofluorescence 2 ug/ml
<b>Application Notes</b>	WB: Detects an approx. 54 kDa protein representing P450 1A1 from MCF-7 cell extract.

**Images**

Western Blot: Cytochrome P450 1A1 Antibody [NB300-608] - Analysis of cytochrome P450 1A1 from MCF-7 cell extract. **Fig. 1**





### **Novus Biologicals USA**

10730 E. Briarwood Avenue  
Centennial, CO 80112  
USA  
Phone: 303.730.1950  
Toll Free: 1.888.506.6887  
Fax: 303.730.1966  
nb-customerservice@bio-techne.com

### **Bio-Techne Canada**

21 Canmotor Ave  
Toronto, ON M8Z 4E6  
Canada  
Phone: 905.827.6400  
Toll Free: 855.668.8722  
Fax: 905.827.6402  
canada.inquires@bio-techne.com

### **Bio-Techne Ltd**

19 Barton Lane  
Abingdon Science Park  
Abingdon, OX14 3NB, United Kingdom  
Phone: (44) (0) 1235 529449  
Free Phone: 0800 37 34 15  
Fax: (44) (0) 1235 533420  
info.EMEA@bio-techne.com

### **General Contact Information**

www.novusbio.com  
Technical Support: nb-technical@bio-  
techne.com  
Orders: nb-customerservice@bio-techne.com  
General: novus@novusbio.com

### **Limitations**

This product is for research use only and is not approved for use in humans or in clinical diagnosis. Primary Antibodies are guaranteed for 1 year from date of receipt.

For more information on our 100% guarantee, please visit [www.novusbio.com/guarantee](http://www.novusbio.com/guarantee)

Earn gift cards/discounts by submitting a review: [www.novusbio.com/reviews/submit/NB300-608](http://www.novusbio.com/reviews/submit/NB300-608)

Earn gift cards/discounts by submitting a publication using this product:  
[www.novusbio.com/publications](http://www.novusbio.com/publications)

