

Product Datasheet

Hydrogen Potassium ATPase Beta Antibody (2G11) NB300-583

Unit Size: 100 uL

Store at -20C. Avoid freeze-thaw cycles.

www.novusbio.com



technical@novusbio.com

Publications: 5

Protocols, Publications, Related Products, Reviews, Research Tools and Images at:
www.novusbio.com/NB300-583

Updated 10/23/2024 v.20.1

Earn rewards for product
reviews and publications.

Submit a publication at www.novusbio.com/publications

Submit a review at www.novusbio.com/reviews/destination/NB300-583

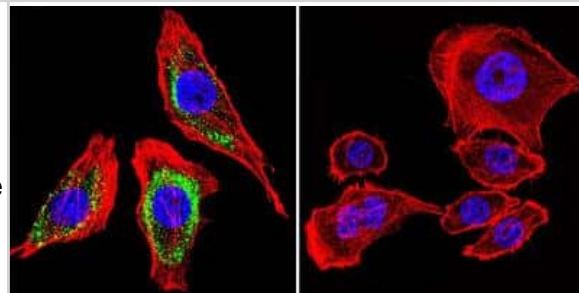


NB300-583**Hydrogen Potassium ATPase Beta Antibody (2G11)**

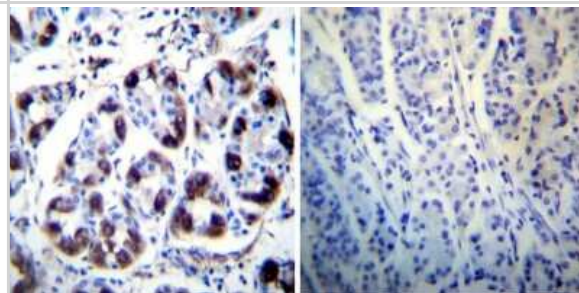
Product Information	
Unit Size	100 uL
Concentration	This product is unpurified. The exact concentration of antibody is not quantifiable.
Storage	Store at -20C. Avoid freeze-thaw cycles.
Clonality	Monoclonal
Clone	2G11
Preservative	0.05% Sodium Azide
Isotype	IgG1
Purity	Unpurified
Buffer	Ascites diluted with PBS
Product Description	
Host	Mouse
Gene ID	496
Gene Symbol	ATP4B
Species	Human, Mouse, Rat, Porcine, Bovine, Canine, Ferret, Rabbit
Reactivity Notes	Please note that this antibody is reactive to Mouse and derived from the same host, Mouse. Additional Mouse on Mouse blocking steps may be required for IHC and ICC experiments. Please contact Technical Support for more information.
Specificity/Sensitivity	Detects the beta-subunit of hydrogen/potassium ATPase.
Immunogen	Purified 34 kDa core peptide from deglycosylated hog gastric microsomes.
Product Application Details	
Applications	Western Blot, Dot Blot, Flow Cytometry, Immunocytochemistry/ Immunofluorescence, Immunohistochemistry, Immunohistochemistry-Frozen, Immunohistochemistry-Paraffin, Immunoprecipitation, Chromatin Immunoprecipitation (ChIP)
Recommended Dilutions	Western Blot 1:4000, Flow Cytometry 1:50, Immunohistochemistry 1:10 - 1:500, Immunocytochemistry/ Immunofluorescence 1:10-1:500, Immunoprecipitation 1:10 - 1:500, Immunohistochemistry-Paraffin 1:2000, Immunohistochemistry-Frozen 1:2000, Dot Blot 1:100 - 1:2000, Chromatin Immunoprecipitation (ChIP) 1:10-1:500
Application Notes	DB usage was reported in scientific literature (PMID: 26686297).

Images

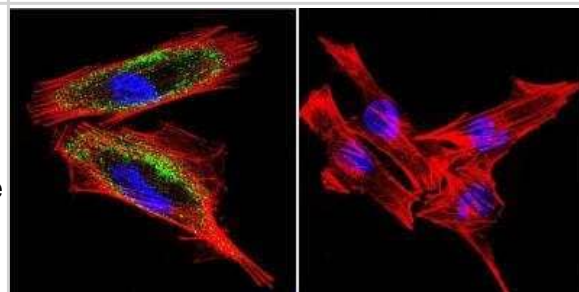
Immunocytochemistry/Immunofluorescence: Hydrogen Potassium ATPase Beta Antibody (2G11) [NB300-583] - Hydrogen/Potassium ATPase beta staining (green), F-Actin staining with Phalloidin (red) and nuclei with DAPI (blue) is shown. Cells were grown on chamber slides and fixed with formaldehyde prior to staining. Cells were probed without (control) or with or an antibody recognizing Hydrogen/Potassium ATPase beta at a dilution of 1:100 over night at 4C, washed with PBS and incubated with a DyLight-488 conjugated.



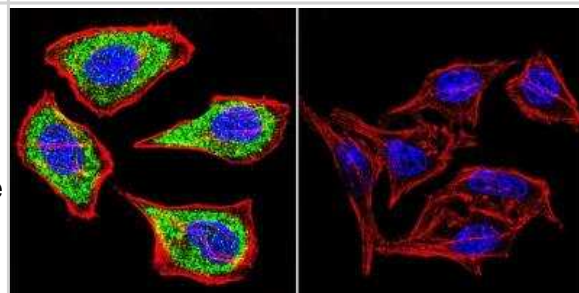
Immunohistochemistry-Paraffin: Hydrogen Potassium ATPase Beta Antibody (2G11) [NB300-583] - Both normal and cancer biopsies of deparaffinized Human stomach tissues.



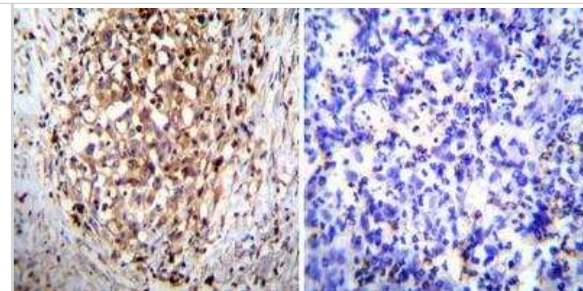
Immunocytochemistry/Immunofluorescence: Hydrogen Potassium ATPase Beta Antibody (2G11) [NB300-583] - Hydrogen/Potassium ATPase beta staining (green), F-Actin staining with Phalloidin (red) and nuclei with DAPI (blue) is shown. Cells were grown on chamber slides and fixed with formaldehyde prior to staining. Cells were probed without (control) or with or an antibody recognizing Hydrogen/Potassium ATPase beta at a dilution of 1:100 over night at 4C, washed with PBS and incubated with a DyLight-488 conjugated.



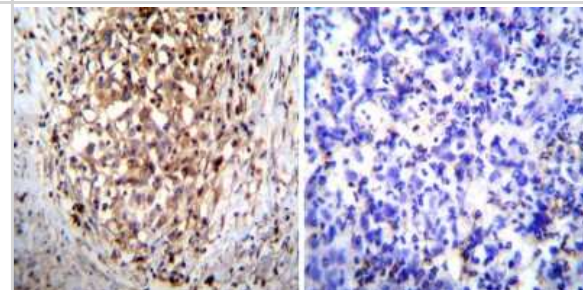
Immunocytochemistry/Immunofluorescence: Hydrogen Potassium ATPase Beta Antibody (2G11) [NB300-583] - Hydrogen/Potassium ATPase beta staining (green), F-Actin staining with Phalloidin (red) and nuclei with DAPI (blue) is shown. Cells were grown on chamber slides and fixed with formaldehyde prior to staining. Cells were probed without (control) or with or an antibody recognizing Hydrogen/Potassium ATPase beta at a dilution of 1:200 over night at 4C, washed with PBS and incubated with a DyLight-488 conjugated.



Immunohistochemistry-Paraffin: Hydrogen Potassium ATPase Beta Antibody (2G11) [NB300-583] - Both normal and cancer biopsies of deparaffinized Human gastric carcinoma tissues.



Immunohistochemistry-Paraffin: Hydrogen Potassium ATPase Beta Antibody (2G11) [NB300-583] - Both normal and cancer biopsies of deparaffinized Human gastric carcinoma tissues.



Publications

Feng XY, Yan JT, Li GW et al. Source of dopamine in gastric juice and luminal dopamine-induced duodenal bicarbonate secretion via apical dopamine receptor 2 Br. J. Pharmacol. 2020-03-10 [PMID: 32154577] (WB, Rat)

Takumida M, Takumida H, Anniko M. Gastric-type H(+),K(+)-ATPase in mouse vestibular end organs. Acta Otolaryngol. 2016-10-21 [PMID: 27768854] (IHC-P, Mouse)

Noreldin AE, Sogabe M, Yamano Y et al. Spatial distribution of osteoblast activating peptide in the rat stomach. Acta Histochem. 2015-12-10 [PMID: 26686297] (Cytometric Bead Assay Standard, ICC/IF, Rat)

Martin AB, Aydemir TB, Guthrie GJ et al. Gastric and Colonic Zinc Transporter ZIP11 (Slc39a11) in Mice Responds to Dietary Zinc and Exhibits Nuclear Localization. J Nutr. 2013-10-02 [PMID: 24089422] (ICC/IF, IHC-P, Mouse)

Mastrodonato M, Calamita G, Rossi R et al. Expression of H+,K+-ATPase Glycopattern Analysis in the Gastric GIs of Rana esculenta. J Histochem Cytochem :jhc2008.952234. 2008-01-01 [PMID: 19001639]



Novus Biologicals USA

10730 E. Briarwood Avenue
Centennial, CO 80112
USA
Phone: 303.730.1950
Toll Free: 1.888.506.6887
Fax: 303.730.1966
nb-customerservice@bio-techne.com

Bio-Techne Canada

21 Canmotor Ave
Toronto, ON M8Z 4E6
Canada
Phone: 905.827.6400
Toll Free: 855.668.8722
Fax: 905.827.6402
canada.inquires@bio-techne.com

Bio-Techne Ltd

19 Barton Lane
Abingdon Science Park
Abingdon, OX14 3NB, United Kingdom
Phone: (44) (0) 1235 529449
Free Phone: 0800 37 34 15
Fax: (44) (0) 1235 533420
info.EMEA@bio-techne.com

General Contact Information

www.novusbio.com
Technical Support: nb-technical@bio-techne.com
Orders: nb-customerservice@bio-techne.com
General: novus@novusbio.com

Products Related to NB300-583

HAF007	Goat anti-Mouse IgG Secondary Antibody [HRP]
NB720-B	Rabbit anti-Mouse IgG (H+L) Secondary Antibody [Biotin]
NBP1-97005-0.5mg	Mouse IgG1 Isotype Control (MG1)
NBP2-38674PEP	Hydrogen Potassium ATPase Beta Recombinant Protein Antigen

Limitations

This product is for research use only and is not approved for use in humans or in clinical diagnosis. Primary Antibodies are guaranteed for 1 year from date of receipt.

For more information on our 100% guarantee, please visit www.novusbio.com/guarantee

Earn gift cards/discounts by submitting a review: www.novusbio.com/reviews/submit/NB300-583

Earn gift cards/discounts by submitting a publication using this product:
www.novusbio.com/publications

