

Product Datasheet

p23/PTGES3 Antibody (JJ3)

NB300-576

Unit Size: 100uL

Store at -20C. Avoid freeze-thaw cycles.

www.novusbio.com



technical@novusbio.com

Publications: 8

Protocols, Publications, Related Products, Reviews, Research Tools and Images at:
www.novusbio.com/NB300-576

Updated 10/23/2024 v.20.1

Earn rewards for product reviews and publications.

Submit a publication at www.novusbio.com/publications

Submit a review at www.novusbio.com/reviews/destination/NB300-576



NB300-576

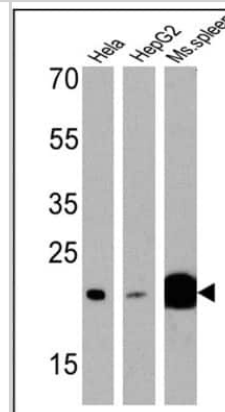
p23/PTGES3 Antibody (JJ3)

| Product Information | |
|------------------------------------|--|
| Unit Size | 100uL |
| Concentration | This product is unpurified. The exact concentration of antibody is not quantifiable. |
| Storage | Store at -20C. Avoid freeze-thaw cycles. |
| Clonality | Monoclonal |
| Clone | JJ3 |
| Preservative | 0.05% Sodium Azide |
| Isotype | IgG1 |
| Purity | Unpurified |
| Buffer | Ascites |
| Product Description | |
| Host | Mouse |
| Gene ID | 10728 |
| Gene Symbol | PTGES3 |
| Species | Human, Mouse, Rat, Chicken, Guinea Pig, Primate, Rabbit, Xenopus |
| Reactivity Notes | Rat reactivity reported in scientific literature (PMID: 16085934). Primate reactivity reported in scientific literature (PMID: 11553639). Clawed Frog reactivity reported in scientific literature (PMID: 18364744). Please note that this antibody is reactive to Mouse and derived from the same host, Mouse. Additional Mouse on Mouse blocking steps may be required for IHC and ICC experiments. Please contact Technical Support for more information. |
| Specificity/Sensitivity | p23 (JJ3) |
| Immunogen | Recombinant human p23 protein. |
| Product Application Details | |
| Applications | Western Blot, Flow Cytometry, Immunocytochemistry/ Immunofluorescence, Immunohistochemistry, Immunohistochemistry-Paraffin, Immunoprecipitation |
| Recommended Dilutions | Western Blot 1:1000, Flow Cytometry 1:100, Immunohistochemistry 1:1000, Immunocytochemistry/ Immunofluorescence 1:200 - 1:2000, Immunoprecipitation 1:10 - 1:500, Immunohistochemistry-Paraffin 1:1000 |
| Application Notes | WB: Detects an approx. 23 kDa protein representing p23 from rabbit reticulocyte lysate. May be useful in IP for both free and complexed p23. |

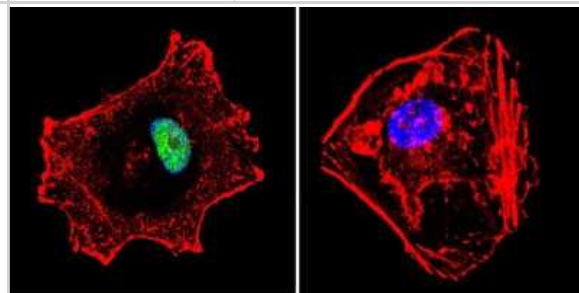


Images

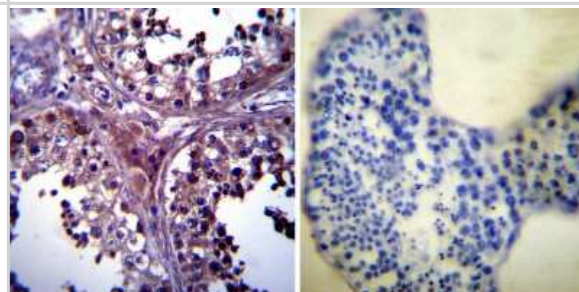
Western Blot: p23/PTGES3 Antibody (JJ3) [NB300-576] - Analysis of 25 ug of HeLa (Lane 1), HepG2 (Lane 2), and mouse spleen cell lysates (Lane 3) and a molecular weight protein ladder.



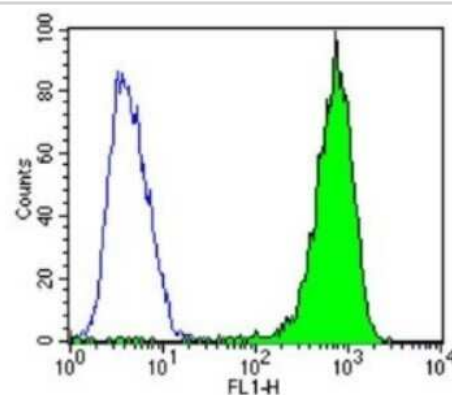
Immunocytochemistry/Immunofluorescence: p23/PTGES3 Antibody (JJ3) [NB300-576] - p23 staining (green), F-Actin staining with Phalloidin (red) and nuclei with DAPI (blue) is shown. Cells were grown on chamber slides and fixed with formaldehyde prior to staining. Cells were probed without (control) or with or an antibody recognizing p23 at a dilution of 1:500 over night at 4C, washed with PBS and incubated with a DyLight-488 conjugated.



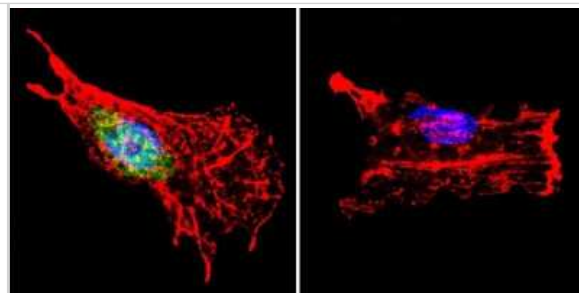
Immunohistochemistry-Paraffin: p23/PTGES3 Antibody (JJ3) [NB300-576] - Normal biopsies of deparaffinized Human testis tissue.



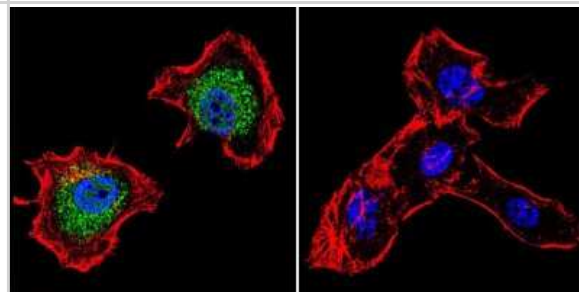
Flow Cytometry: p23/PTGES3 Antibody (JJ3) [NB300-576] - Analysis of 3T3 cells compared to an isotype control (blue).



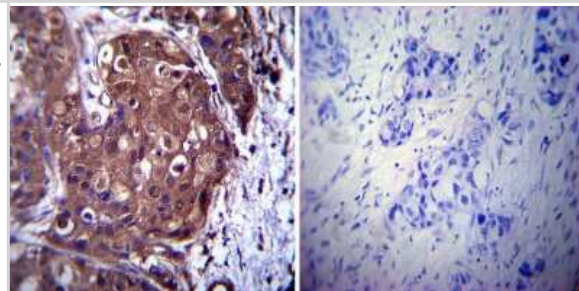
Immunocytochemistry/Immunofluorescence: p23/PTGES3 Antibody (JJ3) [NB300-576] - p23 staining (green), F-Actin staining with Phalloidin (red) and nuclei with DAPI (blue) is shown. Cells were grown on chamber slides and fixed with formaldehyde prior to staining. Cells were probed without (control) or with or an antibody recognizing p23 at a dilution of 1:500 over night at 4C, washed with PBS and incubated with a DyLight-488 conjugated.



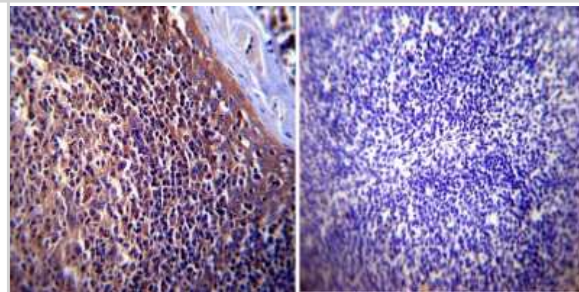
Immunocytochemistry/Immunofluorescence: p23/PTGES3 Antibody (JJ3) [NB300-576] - p23 staining (green), F-Actin staining with Phalloidin (red) and nuclei with DAPI (blue) is shown. Cells were grown on chamber slides and fixed with formaldehyde prior to staining. Cells were probed without (control) or with or an antibody recognizing p23 at a dilution of 1:500 over night at 4C, washed with PBS and incubated with a DyLight-488 conjugated.



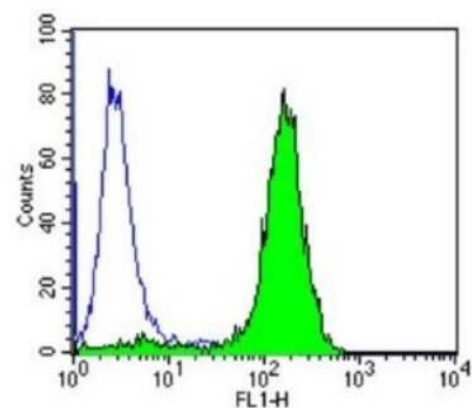
Immunohistochemistry-Paraffin: p23/PTGES3 Antibody (JJ3) [NB300-576] - Cancer biopsies of deparaffinized Human breast carcinoma tissue.



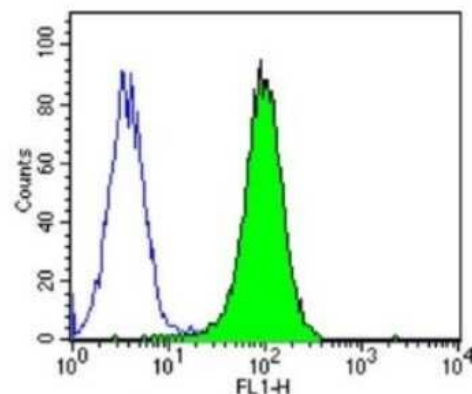
Immunohistochemistry-Paraffin: p23/PTGES3 Antibody (JJ3) [NB300-576] - Normal biopsies of deparaffinized Human tonsil tissue.



Flow Cytometry: p23/PTGES3 Antibody (JJ3) [NB300-576] - Analysis of Jurkat cells compared to an isotype control (blue).



Flow Cytometry: p23/PTGES3 Antibody (JJ3) [NB300-576] - Analysis of Hela cells compared to an isotype control (blue).



Publications

He X, Smith SE, Chen S et al. Tumor-initiating stem cell shapes its microenvironment into an immunosuppressive barrier and pro-tumorigenic niche *Cell reports* 2021-09-07 [PMID: 34496236]

de Vries S, Benes V, Naarmann-de Vries IS et al. P23 Acts as Functional RBP in the Macrophage Inflammation Response *Frontiers in molecular biosciences* 2021-06-11 [PMID: 34179071] (IP, Mouse)

Vilas A, Yuste-Checa P, Gallego D et al. Proteostasis regulators as potential rescuers of PMM2 activity *Biochim Biophys Acta Mol Basis Dis* 2020-03-25 [PMID: 3222543] (WB, Human)

Lackie RE, Razzaq AR, Farhan SMK et al. Modulation of hippocampal neuronal resilience during aging by the Hsp70/Hsp90 co-chaperone STI1 *J. Neurochem.* 2019-09-28 [PMID: 31562773] (WB, Mouse)

Garcia-Belinchon M, Sanchez-Osuna M, Martinez-Escardo L et al. An Early and Robust Activation of Caspases Heads Cells for a Regulated Form of Necrotic-like Cell Death *J. Biol. Chem.* 2015-06-29 [PMID: 26124276] (WB, Human)

Sanchez-Osuna M, Garcia-Belinchon M, Iglesias-Guimaraes V et al. Caspase-Activated DNase is necessary and sufficient for oligonucleosomal DNA breakdown, but not for chromatin disassembly during caspase-dependent apoptosis of LN-18 glioblastoma cells. *J. Biol. Chem.* 2014-05-17 [PMID: 24838313] (WB, Human)

Casanelles E, Gozzelino R, Marques-Fernandez F et al. NF-kappaB activation fails to protect cells to TNFalpha-induced apoptosis in the absence of Bcl-xL, but not Mcl-1, Bcl-2 or Bcl-w. *Biochim Biophys Acta* 2013-01-28 [PMID: 23369735] (WB, Human)

Iglesias-Guimaraes V, Gil-Guinon E, Gabernet G et al. Apoptotic DNA Degradation into Oligonucleosomal Fragments, but Not Apoptotic Nuclear Morphology, Relies on a Cytosolic Pool of DFF40/CAD Endonuclease. *J Biol Chem* 2012-01-17 [PMID: 22253444] (WB, Human)



Novus Biologicals USA

10730 E. Briarwood Avenue
Centennial, CO 80112
USA
Phone: 303.730.1950
Toll Free: 1.888.506.6887
Fax: 303.730.1966
nb-customerservice@bio-techne.com

Bio-Techne Canada

21 Canmotor Ave
Toronto, ON M8Z 4E6
Canada
Phone: 905.827.6400
Toll Free: 855.668.8722
Fax: 905.827.6402
canada.inquires@bio-techne.com

Bio-Techne Ltd

19 Barton Lane
Abingdon Science Park
Abingdon, OX14 3NB, United Kingdom
Phone: (44) (0) 1235 529449
Free Phone: 0800 37 34 15
Fax: (44) (0) 1235 533420
info.EMEA@bio-techne.com

General Contact Information

www.novusbio.com
Technical Support: nb-technical@bio-techne.com
Orders: nb-customerservice@bio-techne.com
General: novus@novusbio.com

Products Related to NB300-576

| | |
|------------------|---|
| NBL1-14937 | p23/PTGES3 Overexpression Lysate |
| HAF007 | Goat anti-Mouse IgG Secondary Antibody [HRP] |
| NB720-B | Rabbit anti-Mouse IgG (H+L) Secondary Antibody [Biotin] |
| NBP1-97005-0.5mg | Mouse IgG1 Isotype Control (MG1) |

Limitations

This product is for research use only and is not approved for use in humans or in clinical diagnosis. Primary Antibodies are guaranteed for 1 year from date of receipt.

For more information on our 100% guarantee, please visit www.novusbio.com/guarantee

Earn gift cards/discounts by submitting a review: www.novusbio.com/reviews/submit/NB300-576

Earn gift cards/discounts by submitting a publication using this product:
www.novusbio.com/publications

