

Product Datasheet

PSD-95 Antibody (6G6-1C9) [Alexa Fluor® 647] NB300-556AF647

Unit Size: 0.1 ml

Store at 4C in the dark.

www.novusbio.com



technical@novusbio.com

Publications: 1

Protocols, Publications, Related Products, Reviews, Research Tools and Images at:
www.novusbio.com/NB300-556AF647

Updated 10/23/2024 v.20.1

Earn rewards for product
reviews and publications.

Submit a publication at www.novusbio.com/publications

Submit a review at www.novusbio.com/reviews/destination/NB300-556AF647



NB300-556AF647

PSD-95 Antibody (6G6-1C9) [Alexa Fluor® 647]

Product Information	
Unit Size	0.1 ml
Concentration	Concentrations vary lot to lot. See vial label for concentration. If unlisted please contact technical services.
Storage	Store at 4C in the dark.
Clonality	Monoclonal
Clone	6G6-1C9
Preservative	0.05% Sodium Azide
Isotype	IgG2a
Conjugate	Alexa Fluor 647
Purity	Protein A purified
Buffer	50mM Sodium Borate

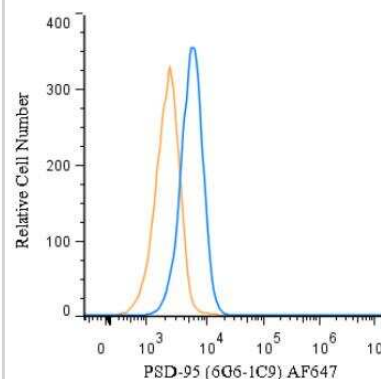
Product Description	
Host	Mouse
Gene ID	1742
Gene Symbol	DLG4
Species	Human, Mouse, Rat, Invertebrate, Primate
Reactivity Notes	Invertebrate reactivity reported in scientific literature (PMID: 18182049). Primate reactivity reported in scientific literature (PMID: 20519524). Please note that this antibody is reactive to Mouse and derived from the same host, Mouse. Additional Mouse on Mouse blocking steps may be required for IHC and ICC experiments. Please contact Technical Support for more information.
Marker	post-Synaptic Marker
Specificity/Sensitivity	Detects Post Synaptic Density 95 kDa (PSD-95) from rat tissues.
Immunogen	Purified recombinant rat PSD-95.
Notes	<p>Alexa Fluor (R) products are provided under an intellectual property license from Life Technologies Corporation. The purchase of this product conveys to the buyer the non-transferable right to use the purchased product and components of the product only in research conducted by the buyer (whether the buyer is an academic or for-profit entity). The sale of this product is expressly conditioned on the buyer not using the product or its components, or any materials made using the product or its components, in any activity to generate revenue, which may include, but is not limited to use of the product or its components: (i) in manufacturing; (ii) to provide a service, information, or data in return for payment; (iii) for therapeutic, diagnostic or prophylactic purposes; or (iv) for resale, regardless of whether they are resold for use in research. For information on purchasing a license to this product for purposes other than as described above, contact Life Technologies Corporation, 5791 Van Allen Way, Carlsbad, CA 92008 USA or outlicensing@lifetech.com. This conjugate is made on demand. Actual recovery may vary from the stated volume of this product. The volume will be greater than or equal to the unit size stated on the datasheet.</p>

Product Application Details

Applications	Western Blot, Flow Cytometry, Immunocytochemistry/ Immunofluorescence, Immunohistochemistry, Immunohistochemistry-Frozen, Immunohistochemistry-Paraffin, Immunoprecipitation, Block/Neutralize, Chromatin Immunoprecipitation (ChIP)
Recommended Dilutions	Western Blot, Flow Cytometry, Immunohistochemistry, Immunocytochemistry/ Immunofluorescence, Immunoprecipitation, Immunohistochemistry-Paraffin, Immunohistochemistry-Frozen, Chromatin Immunoprecipitation (ChIP), Block/Neutralize

Images

Flow Cytometry: PSD-95 Antibody (6G6-1C9) [Alexa Fluor 647] [NB300-556AF647] - An intracellular stain was performed on HeLa cells with PSD-95 Antibody (6G6-1C9) NB300-556AF647 (blue) and a matched isotype control (orange). Cells were fixed with 4% PFA and then permeabilized with 0.1% saponin. Cells were incubated in an antibody dilution of 2.5 ug/mL for 30 minutes at room temperature. Both antibodies were conjugated to Alexa Fluor 647.



Publications

Scaduto P, Lauterborn JC, Cox CD et al. Functional excitatory to inhibitory synaptic imbalance and loss of cognitive performance in people with Alzheimer's disease neuropathologic change Acta neuropathologica 2022-12-20 [PMID: 36538112] (FLOW, Human)

Details:

Dilution used in flow 1:80



Novus Biologicals USA

10730 E. Briarwood Avenue
Centennial, CO 80112
USA
Phone: 303.730.1950
Toll Free: 1.888.506.6887
Fax: 303.730.1966
nb-customerservice@bio-techne.com

Bio-Techne Canada

21 Canmotor Ave
Toronto, ON M8Z 4E6
Canada
Phone: 905.827.6400
Toll Free: 855.668.8722
Fax: 905.827.6402
canada.inquires@bio-techne.com

Bio-Techne Ltd

19 Barton Lane
Abingdon Science Park
Abingdon, OX14 3NB, United Kingdom
Phone: (44) (0) 1235 529449
Free Phone: 0800 37 34 15
Fax: (44) (0) 1235 533420
info.EMEA@bio-techne.com

General Contact Information

www.novusbio.com
Technical Support: nb-technical@bio-techne.com
Orders: nb-customerservice@bio-techne.com
General: novus@novusbio.com

Products Related to NB300-556AF647

IC003R	Mouse IgG2a Isotype Control (20102) [Alexa Fluor® 647]
NB300-556AF700	PSD-95 Antibody (6G6-1C9) [Alexa Fluor® 700]
H00001742-P01-10ug	Recombinant Human PSD-95 GST (N-Term) Protein
DBD00	BDNF [HRP]

Limitations

This product is for research use only and is not approved for use in humans or in clinical diagnosis. Primary Antibodies are guaranteed for 1 year from date of receipt.

For more information on our 100% guarantee, please visit www.novusbio.com/guarantee

Earn gift cards/discounts by submitting a review: www.novusbio.com/reviews/submit/NB300-556AF647

Earn gift cards/discounts by submitting a publication using this product:
www.novusbio.com/publications

