

Product Datasheet

Maxi Potassium channel beta Antibody NB300-535

Unit Size: 100 ug

Store at -20C. Avoid freeze-thaw cycles.

www.novusbio.com



technical@novusbio.com

Publications: 7

Protocols, Publications, Related Products, Reviews, Research Tools and Images at:
www.novusbio.com/NB300-535

Updated 9/9/2025 v.20.1

Earn rewards for product
reviews and publications.

Submit a publication at www.novusbio.com/publications

Submit a review at www.novusbio.com/reviews/destination/NB300-535



NB300-535

Maxi Potassium channel beta Antibody

Product Information	
Unit Size	100 ug
Concentration	1 mg/ml
Storage	Store at -20C. Avoid freeze-thaw cycles.
Clonality	Polyclonal
Preservative	0.05% Sodium Azide
Isotype	IgG
Purity	Immunogen affinity purified
Buffer	PBS with 1 mg/ml BSA

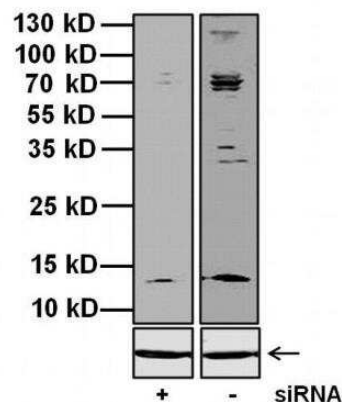
Product Description	
Description	Novus Biologicals Rabbit Maxi Potassium channel beta Antibody (NB300-535) is a polyclonal antibody validated for use in IHC, WB, Flow and ICC/IF. Anti-Maxi Potassium channel beta Antibody: Cited in 7 publications. All Novus Biologicals antibodies are covered by our 100% guarantee.
Host	Rabbit
Gene ID	3779
Gene Symbol	KCNMB1
Species	Human, Mouse, Rat, Porcine, Canine, Rabbit
Reactivity Notes	Rabbit reactivity reported in scientific literature (PMID: 15613616). Caniine (PMID: 20576683). Porcine (PMID: 19749164).
Immunogen	Synthetic Peptide: L(90) Y H T E D T R D Q N Q Q C(103)

Product Application Details	
Applications	Western Blot, Immunohistochemistry-Paraffin, Flow Cytometry, Immunocytochemistry/ Immunofluorescence, Immunohistochemistry, Knockdown Validated
Recommended Dilutions	Western Blot 2.0 ug/ml, Flow Cytometry, Immunohistochemistry 1:200 - 1:2000, Immunocytochemistry/ Immunofluorescence 1:100 - 1:200, Immunohistochemistry-Paraffin 1:200 - 1:2000, Knockdown Validated
Application Notes	Use in Flow Cytometry reported in scientific literature (PMID:32265729).

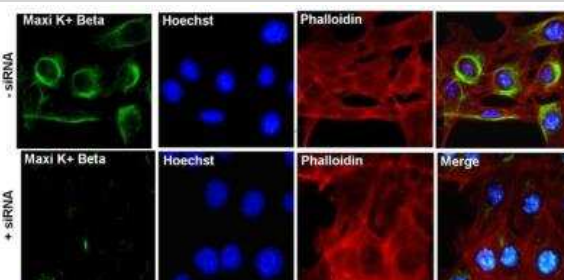


Images

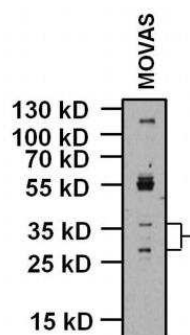
Western Blot: Maxi Potassium channel beta Antibody [NB300-535] - Analysis of Maxi K+ Beta (KCNMB1) was performed by loading 20ug of Movas whole cell lysates with and without Maxi K+ Beta (KCNMB1) siRNA and 10ul prestained protein ladder per well onto a 4-20% Tris-Glycine polyacrylamide gel. Proteins were transferred to a nitrocellulose membrane and blocked with 5% Milk/TBST for at least 1 hour at room temperature. Maxi K+ Beta was detected using a Maxi K+ Beta rabbit polyclonal antibody at a concentration of 1ug/ml in blocking buffer overnight at 4 degrees C on a rocking platform, followed by a goat anti-rabbit IgG-HRP secondary antibody at a dilution of 1:5,000 for at least 1 hour at room temperature. Chemiluminescent detection was performed.



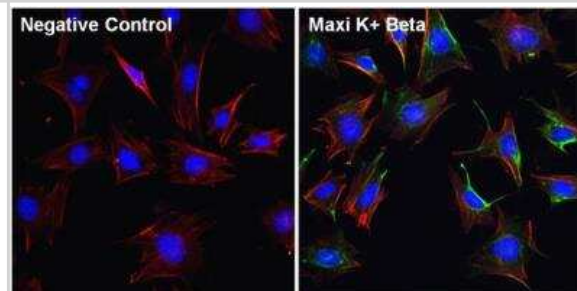
Immunocytochemistry/Immunofluorescence: Maxi Potassium channel beta Antibody [NB300-535] - analysis of Maxi K+ Beta (green) in Movas cells transfected with (+) and without (-) Maxi K+ Beta siRNA. The cells were fixed with 4% paraformaldehyde for 15 minutes, permeabilized with 0.1% Triton X-100 in PBS for 10 minutes, and blocked with 3% BSA in PBS for 30 minutes at room temperature. Cells were stained with a p38 polyclonal antibody at a dilution of 1:100 in staining buffer for 1 hour at room temperature, and then incubated with a Goat anti-Rabbit IgG (H+L) Secondary Antibody, Alexa Fluor 488 conjugate at a dilution of 1:1000 for 1 hour at room temperature (green). F-actin (red) was stained by Dylight 554 Phalloidin and Nuclei (blue) were stained with Hoechst dye.



Western Blot: Maxi Potassium channel beta Antibody [NB300-535] - Analysis of Maxi K+ Beta was performed by loading 20ug of Movas whole cell lysates and 10ul prestained protein ladder per well onto a 4-20% Tris-Glycine polyacrylamide gel. Proteins were transferred to a nitrocellulose membrane and blocked with 5% Milk/TBST for at least 1 hour at room temperature. Maxi K+ Beta was detected using a Maxi K+ rabbit polyclonal antibody at a concentration of 1ug/ml in blocking buffer overnight at 4 degrees C on a rocking platform, followed by a goat anti-rabbit IgG-HRP secondary antibody at a dilution of 1:5,000 for at least 1 hour at room temperature. Chemiluminescent detection was performed.



Immunocytochemistry/Immunofluorescence: Maxi Potassium channel beta Antibody [NB300-535] - Analysis of Maxi K+ Beta (green) in Movas cells. The cells were fixed with 4% paraformaldehyde for 15 minutes, permeabilized with 0.1% Triton X-100 in PBS for 10 minutes, and blocked with 3% BSA in PBS for 30 minutes at room temperature. Cells were stained with a Maxi K+ Beta polyclonal antibody at a dilution of 1:100 in staining buffer for 1 hour at room temperature, and then incubated with a Goat anti-Rabbit IgG (H+L) Secondary Antibody, Alexa Fluor 488 conjugate at a dilution of 1:1000 for 1 hour at room temperature (green). F-actin (red) was stained by Dylight 554 Phalloidin and Nuclei (blue) were stained with Hoechst dye.



Publications

Fehér A, Pethő Z, Szántó TG et al. Mapping the functional expression of auxiliary subunits of KCa1.1 in glioblastoma. *Scientific reports* 2022-12-20 [PMID: 36539587] (WB, Human)

Wang LF, Ling DY, Huang MX et al. Influence of atherosclerosis on the molecular expression of the TRPC1/BK signal complex in the aortic smooth muscles of mice. *Experimental and therapeutic medicine* 2022-01-01 [PMID: 34815756] (WB, IHC-P, Mouse)

Echeverry S, Grismaldo A, Sánchez C et al. Activation of BK Channel Contributes to PL-Induced Mesenchymal Stem Cell Migration. *Front Physiol* 2020-03-24 [PMID: 32265729] (WB, FLOW, Rat)

Martin G, O'Connell RJ, Pietrzykowski AZ et al. Interleukin-4 activates large-conductance, calcium-activated potassium (BKCa) channels in human airway smooth muscle cells. *Exp Physiol*. 2008-07-01 [PMID: 18403443]

Alioua, A, R Lu et al. Slo1 Caveolin-binding Motif, a Mechanism of Caveolin-1-Slo1 Interaction Regulating Slo1 Surface Expression. *J Biol Chem* 283: 4808-4817. 2008-01-01 [PMID: 18079116] (ICC/IF)

Borbouse L, Dick GM, Asano S, Bender SB, Dincer UD, Payne GA, Neeb ZP, Bratz IN, Sturek M, Tune JD. Impaired function of coronary BK(Ca) channels in metabolic syndrome. *Am J Physiol Heart Circ Physiol* 297(5):H1629-37. 2009-11-01 [PMID: 19749164]

Martin G, Puig S, Pietrzykowski A, Zadek P, Emery P, Treistman S. Somatic localization of a specific large-conductance calcium-activated potassium channel subtype controls compartmentalized ethanol sensitivity in the nucleus accumbens. *J Neurosci* 21;24(29):6563-72. 2004-07-01 [PMID: 15269268]





Novus Biologicals USA

10730 E. Briarwood Avenue
Centennial, CO 80112
USA
Phone: 303.730.1950
Toll Free: 1.888.506.6887
Fax: 303.730.1966
nb-customerservice@bio-techne.com

Bio-Techne Canada

21 Canmotor Ave
Toronto, ON M8Z 4E6
Canada
Phone: 905.827.6400
Toll Free: 855.668.8722
Fax: 905.827.6402
canada.inquires@bio-techne.com

Bio-Techne Ltd

19 Barton Lane
Abingdon Science Park
Abingdon, OX14 3NB, United Kingdom
Phone: (44) (0) 1235 529449
Free Phone: 0800 37 34 15
Fax: (44) (0) 1235 533420
info.EMEA@bio-techne.com

General Contact Information

www.novusbio.com
Technical Support: nb-technical@bio-techne.com
Orders: nb-customerservice@bio-techne.com
General: novus@novusbio.com

Products Related to NB300-535

NBP2-33376H	Blue Marker Antibody (6F4-F6) [HRP]
HAF008	Goat anti-Rabbit IgG Secondary Antibody [HRP]
NB7160	Goat anti-Rabbit IgG (H+L) Secondary Antibody [HRP]
NBP2-24891	Rabbit IgG Isotype Control

Limitations

This product is for research use only and is not approved for use in humans or in clinical diagnosis. Primary Antibodies are guaranteed for 1 year from date of receipt.

For more information on our 100% guarantee, please visit www.novusbio.com/guarantee

Earn gift cards/discounts by submitting a review: www.novusbio.com/reviews/submit/NB300-535

Earn gift cards/discounts by submitting a publication using this product:
www.novusbio.com/publications

