

# Product Datasheet

## Prolactin R Antibody (T6) - Azide and BSA Free NB300-531

Unit Size: 100ug

Store at -20C. Avoid freeze-thaw cycles.

[www.novusbio.com](http://www.novusbio.com)



[technical@novusbio.com](mailto:technical@novusbio.com)

### Publications: 7

Protocols, Publications, Related Products, Reviews, Research Tools and Images at:  
[www.novusbio.com/NB300-531](http://www.novusbio.com/NB300-531)

Updated 10/23/2024 v.20.1

Earn rewards for product  
reviews and publications.

Submit a publication at [www.novusbio.com/publications](http://www.novusbio.com/publications)

Submit a review at [www.novusbio.com/reviews/destination/NB300-531](http://www.novusbio.com/reviews/destination/NB300-531)



**NB300-531**

Prolactin R Antibody (T6) - Azide and BSA Free

**Product Information**

<b>Unit Size</b>	100ug
<b>Concentration</b>	LYOPH mg/ml
<b>Storage</b>	Store at -20C. Avoid freeze-thaw cycles.
<b>Clonality</b>	Monoclonal
<b>Clone</b>	T6
<b>Preservative</b>	No Preservative
<b>Reconstitution Instructions</b>	Reconstitute with 0.1 ml PBS.
<b>Isotype</b>	IgG2a
<b>Purity</b>	Protein A purified
<b>Buffer</b>	PBS

**Product Description**

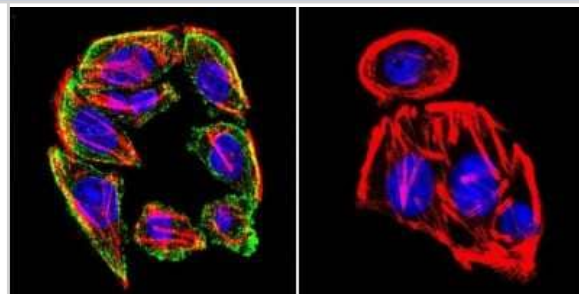
<b>Host</b>	Mouse
<b>Gene ID</b>	5618
<b>Gene Symbol</b>	PRLR
<b>Species</b>	Rat
<b>Specificity/Sensitivity</b>	Detects prolactin (PRL) receptor in rat tissues. This does not cross-react with Growth Hormone (GH) receptor.
<b>Immunogen</b>	Purified rat liver PRL receptor.

**Product Application Details**

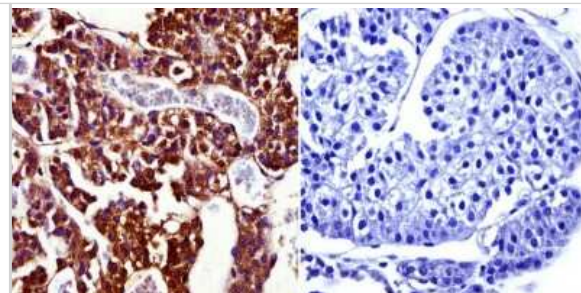
<b>Applications</b>	Western Blot, Immunocytochemistry/ Immunofluorescence, Immunohistochemistry, Immunohistochemistry-Paraffin
<b>Recommended Dilutions</b>	Western Blot 1 ug/ml, Immunohistochemistry 1:25 - 1:200, Immunocytochemistry/ Immunofluorescence 1:10-1:500, Immunohistochemistry-Paraffin 1:25 - 1:200
<b>Application Notes</b>	WB: Detects an approx. 42 kDa protein representing PRL receptor in NB2 cell lysate.

**Images**

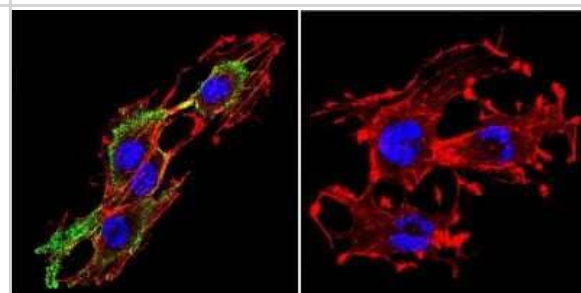
Immunocytochemistry/Immunofluorescence: Prolactin R Antibody (T6) [NB300-531] - Cells were grown on chamber slides and fixed with formaldehyde prior to staining. Cells were probed without (control) or with a Prolactin Receptor monoclonal antibody at a dilution of 1:200 overnight at 4 C, washed with PBS and incubated with a DyLight-488 conjugated secondary antibody and nuclei with DAPI (blue) is shown.



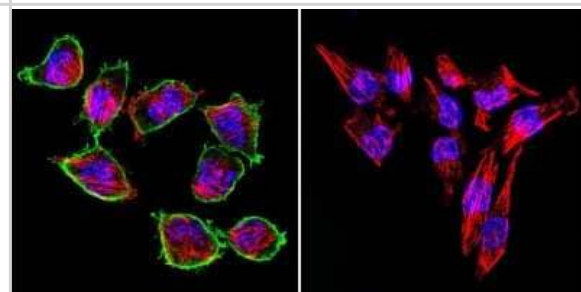
Immunohistochemistry-Paraffin: Prolactin R Antibody (T6) [NB300-531] - Normal biopsies of deparaffinized Rat pituitary gland tissue at a dilution of 1:50.



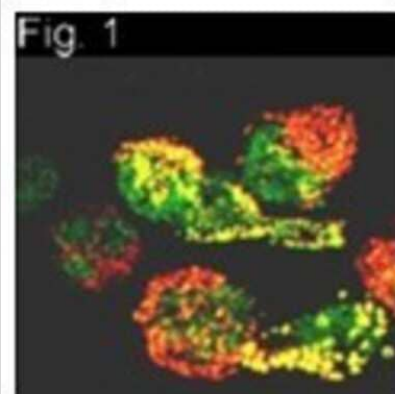
Immunocytochemistry/Immunofluorescence: Prolactin R Antibody (T6) [NB300-531] - Cells were grown on chamber slides and fixed with formaldehyde prior to staining. Cells were probed without (control) or with a Prolactin Receptor monoclonal antibody at a dilution of 1:200 overnight at 4 C, washed with PBS and incubated with a DyLight-488 conjugated secondary antibody and nuclei with DAPI (blue) is shown.



Immunocytochemistry/Immunofluorescence: Prolactin R Antibody (T6) [NB300-531] - Cells were grown on chamber slides and fixed with formaldehyde prior to staining. Cells were probed without (control) or with a Prolactin Receptor monoclonal antibody at a dilution of 1:200 overnight at 4 C, washed with PBS and incubated with a DyLight-488 conjugated secondary antibody and nuclei with DAPI (blue) is shown.



Immunohistochemistry: Prolactin R Antibody (T6) [NB300-531] - Staining of PRL receptor in NB2 cells using NB300-531.



## Publications

Aleman-Garcia YP, Vaquero-Garcia RM, Flores-Fernandez R et al. Prolactin Increases the Frequency of Follicular T Helper Cells with Enhanced IL21 Secretion and OX40 Expression in Lupus-Prone MRL/lpr Mice *Journal of immunology research* 2021-03-08 [PMID: 33763492]

Dardenne M, Kelly PA, Bach JF, Savino W. Identification and functional activity of prolactin receptors in thymic epithelial cells. *Proc. Natl. Acad. Sci., USA*, 88: 9700-9704. 1991-01-01 [PMID: 1946390]

Gagnerault MC, Touraine P, Savino W, Kelly PA, Dardenne M. Expression of prolactin receptors in murine lymphoid cells in normal and autoimmune situations. *J Immunol.* 1993 Jun 15;150(12):5673-81. 1993-01-01 [PMID: 8515082]

Dardenne M, de Moraes Mdo C, Kelly PA, Gagnerault MC. Prolactin receptor expression in human hematopoietic tissues analyzed by flow cytofluorometry. *Endo.*, 134(5): 2108-2114. 1994-01-01 [PMID: 8156910]

Rui H, Lebrun JJ, Kirken RA, Kelly PA, Farrar WL. JAK2 activation and cell proliferation induced by antibody-mediated prolactin receptor dimerization. *Endo.*, 135(4): 1299-1306. 1994-01-01 [PMID: 7925093]

Okamura H, Zachwieja J, Raguet S, Kelly PA. Characterization and applications of monoclonal antibodies to the prolactin receptor. *Endo.*, 124(5): 2499-2508. 1989-01-01 [PMID: 2707162]

Rozakis-Adcock M, Kelly PA. Mutational analysis of the ligand-binding domain of the prolactin receptor. *J. Biol. Chem.*, 266(25): 16472-16477. 1991-01-01 [PMID: 1885580]





### **Novus Biologicals USA**

10730 E. Briarwood Avenue  
Centennial, CO 80112  
USA  
Phone: 303.730.1950  
Toll Free: 1.888.506.6887  
Fax: 303.730.1966  
nb-customerservice@bio-techne.com

### **Bio-Techne Canada**

21 Canmotor Ave  
Toronto, ON M8Z 4E6  
Canada  
Phone: 905.827.6400  
Toll Free: 855.668.8722  
Fax: 905.827.6402  
canada.inquires@bio-techne.com

### **Bio-Techne Ltd**

19 Barton Lane  
Abingdon Science Park  
Abingdon, OX14 3NB, United Kingdom  
Phone: (44) (0) 1235 529449  
Free Phone: 0800 37 34 15  
Fax: (44) (0) 1235 533420  
info.EMEA@bio-techne.com

### **General Contact Information**

[www.novusbio.com](http://www.novusbio.com)  
Technical Support: [nb-technical@bio-techne.com](mailto:nb-technical@bio-techne.com)  
Orders: [nb-customerservice@bio-techne.com](mailto:nb-customerservice@bio-techne.com)  
General: [novus@novusbio.com](mailto:novus@novusbio.com)

### **Products Related to NB300-531**

---

HAF007	Goat anti-Mouse IgG Secondary Antibody [HRP]
NB720-B	Rabbit anti-Mouse IgG (H+L) Secondary Antibody [Biotin]
NBP1-96778	Mouse IgG2a Isotype Control (M2A)
NB300-531UV	Prolactin R Antibody (T6) [DyLight 350]

---

### **Limitations**

This product is for research use only and is not approved for use in humans or in clinical diagnosis. Primary Antibodies are guaranteed for 1 year from date of receipt.

For more information on our 100% guarantee, please visit [www.novusbio.com/guarantee](http://www.novusbio.com/guarantee)

Earn gift cards/discounts by submitting a review: [www.novusbio.com/reviews/submit/NB300-531](http://www.novusbio.com/reviews/submit/NB300-531)

Earn gift cards/discounts by submitting a publication using this product:  
[www.novusbio.com/publications](http://www.novusbio.com/publications)

