

Product Datasheet

SERCA2 ATPase Antibody (IID8) - BSA Free NB300-529

Unit Size: 100uL

Store at -20C. Avoid freeze-thaw cycles.

www.novusbio.com



technical@novusbio.com

Publications: 7

Protocols, Publications, Related Products, Reviews, Research Tools and Images at:
www.novusbio.com/NB300-529

Updated 10/23/2024 v.20.1

Earn rewards for product
reviews and publications.

Submit a publication at www.novusbio.com/publications

Submit a review at www.novusbio.com/reviews/destination/NB300-529

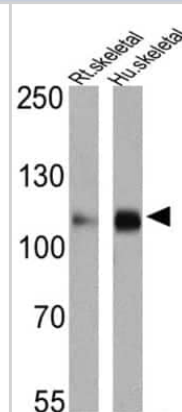


NB300-529**SERCA2 ATPase Antibody (IID8) - BSA Free**

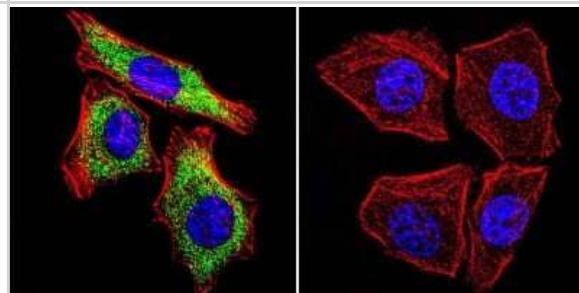
Product Information	
Unit Size	100uL
Concentration	1 mg/ml
Storage	Store at -20C. Avoid freeze-thaw cycles.
Clonality	Monoclonal
Clone	IID8
Preservative	0.05% Sodium Azide
Isotype	IgG1
Purity	Immunogen affinity purified
Buffer	PBS
Product Description	
Host	Mouse
Gene ID	488
Gene Symbol	ATP2A2
Species	Human, Mouse, Rat, Porcine, Amphibian, Bovine, Canine, Guinea Pig, Hamster, Primate, Rabbit, Sheep, Virus
Reactivity Notes	Please note that this antibody is reactive to Mouse and derived from the same host, Mouse. Additional Mouse on Mouse blocking steps may be required for IHC and ICC experiments. Please contact Technical Support for more information.
Specificity/Sensitivity	Detects Sarcoplasmic or Endoplasmic Reticulum Calcium 2 (SERCA2) ATPase. This does not discriminate between the two isoforms.
Immunogen	Purified canine cardiac sarcoplasmic reticulum.
Product Application Details	
Applications	Western Blot, ELISA, Flow Cytometry, Immunocytochemistry/Immunofluorescence, Immunohistochemistry, Immunohistochemistry-Frozen, Immunohistochemistry-Paraffin, Block/Neutralize
Recommended Dilutions	Western Blot 1:500 - 1:5000, Flow Cytometry 1 ug / 10 ⁶ cells, ELISA 1:100 - 1:2000, Immunohistochemistry 1:10 - 1:500, Immunocytochemistry/Immunofluorescence 1:100 - 1:200, Immunohistochemistry-Paraffin 1 ug/ml, Immunohistochemistry-Frozen 1:500, Block/Neutralize
Application Notes	WB: Detects an approx. 110 kDa protein representing SERCA2 ATPase from canine skeletal muscle triad preparations. Not recommended for WB detection of rat SERCA2. IF: Staining of SECRA2 ATPase in rabbit skeletal muscle results in strong labeling of the entire type I (slow) myofiber consistent with sarcoplasmic reticulum localization. May be useful in Flow.

Images

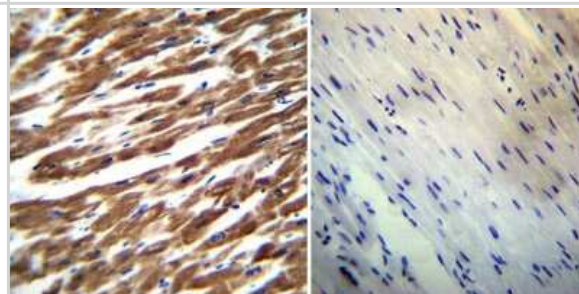
Western Blot: SERCA2 ATPase Antibody (IID8) [NB300-529] - Analysis of 25 ug of rat skeletal muscle (lane 1) and human skeletal muscle (lane 2).



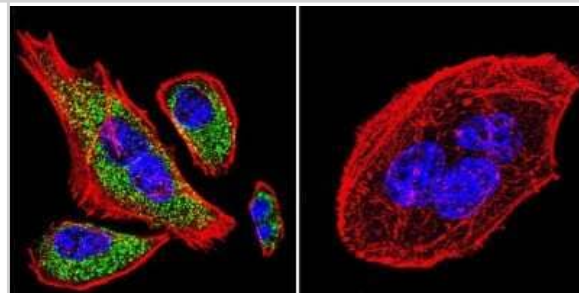
Immunocytochemistry/Immunofluorescence: SERCA2 ATPase Antibody (IID8) [NB300-529] - SERCA2 ATPase staining (green), F-Actin staining with Phalloidin (red) and nuclei with DAPI (blue) is shown. Cells were grown on chamber slides and fixed with formaldehyde prior to staining. Cells were probed without (control) or with or an antibody recognizing SERCA2 ATPase at a dilution of 1:100-1:200 over night at 4C, washed with PBS and incubated with a DyLight-488 conjugated.



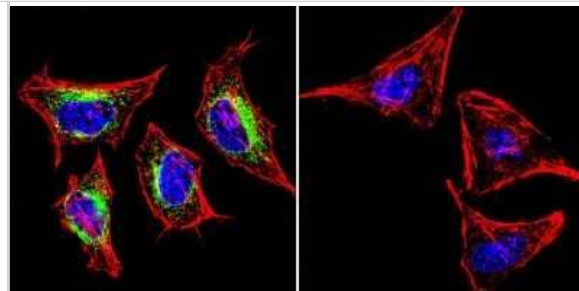
Immunohistochemistry-Paraffin: SERCA2 ATPase Antibody (IID8) [NB300-529] - Both normal and cancer biopsies of deparaffinized human Heart tissue.



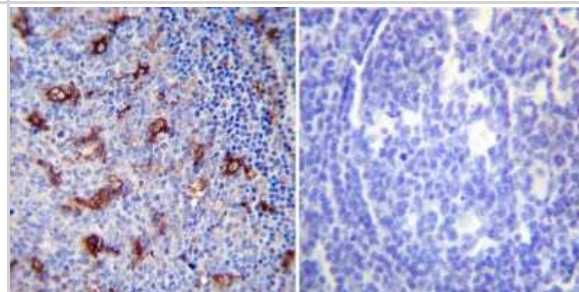
Immunocytochemistry/Immunofluorescence: SERCA2 ATPase Antibody (IID8) [NB300-529] - SERCA2 ATPase staining (green), F-Actin staining with Phalloidin (red) and nuclei with DAPI (blue) is shown. Cells were grown on chamber slides and fixed with formaldehyde prior to staining. Cells were probed without (control) or with or an antibody recognizing SERCA2 ATPase at a dilution of 1:100-1:200 over night at 4C, washed with PBS and incubated with a DyLight-488 conjugated.



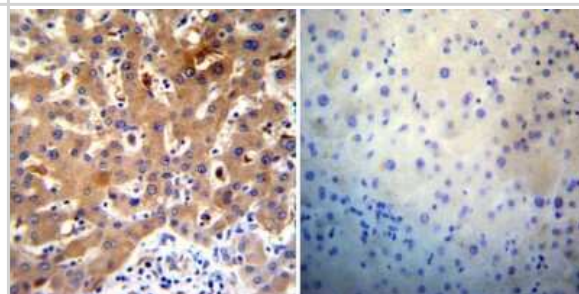
Immunocytochemistry/Immunofluorescence: SERCA2 ATPase Antibody (IID8) [NB300-529] - SERCA2 ATPase staining (green), F-Actin staining with Phalloidin (red) and nuclei with DAPI (blue) is shown. Cells were grown on chamber slides and fixed with formaldehyde prior to staining. Cells were probed without (control) or with or an antibody recognizing SERCA2 ATPase at a dilution of 1:100-1:200 over night at 4C, washed with PBS and incubated with a DyLight-488 conjugated.



Immunohistochemistry-Paraffin: SERCA2 ATPase Antibody (IID8) [NB300-529] - Both normal and cancer biopsies of deparaffinized human Tonsil tissue.



Immunohistochemistry-Paraffin: SERCA2 ATPase Antibody (IID8) [NB300-529] - Both normal and cancer biopsies of deparaffinized human Liver tissue.



Publications

Combot Y, Salo VT, Chadeuf G et al. Seipin localizes at endoplasmic-reticulum-mitochondria contact sites to control mitochondrial calcium import and metabolism in adipocytes Cell reports 2022-01-11 [PMID: 35021082]

Sun A, Wei J, Childress C et al. The E3 ubiquitin ligase NEDD4 is an LC3-interactive protein and regulates autophagy Autophagy. 2017-01-12 [PMID: 28085563] (ICC/IF, Human)

Kjellgren D, Ryan M, Ohlendieck K et al. Sarco(endo)plasmic reticulum Ca²⁺ ATPases (SERCA1 and -2) in human extraocular muscles. Invest Ophthalmol Vis Sci. 2003-12-01 [PMID: 14638697]

Chauvet V, Tian X, Husson H, Grimm DH, Wang T, Hiesberger T, Igarashi P, Bennett AM, Ibraghimov-Beskrovnaya O, Somlo S, Caplan MJ. Mechanical stimuli induce cleavage and nuclear translocation of the polycystin-1 C terminus. J Clin Invest 114(10):1433-43. 2004-11-01 [PMID: 15545994]

Molnar E, Seidler NW, Jona I, Martonosi AN. The binding of monoclonal and polyclonal antibodies to the Ca²⁺(+)-ATPase of sarcoplasmic reticulum: effects on interactions between ATPase molecules. Biochim Biophys Acta 1023(2):147-67. 1990-04-13 [PMID: 1691656]

Adachi T, Matsui R, Xu S et al. Antioxidant improves smooth muscle sarco/endoplasmic reticulum Ca²⁺(+)-ATPase function and lowers tyrosine nitration in hypercholesterolemia and improves nitric oxide-induced relaxation. Circ Res 90(10):1114-21. 2002-05-31 [PMID: 12039802]

Leatherbury L, Yu Q, Chatterjee B et al. A novel mouse model of X-linked cardiac hypertrophy. Am J Physiol Heart Circ Physiol 2008-04-18 [PMID: 18424640]





Novus Biologicals USA

10730 E. Briarwood Avenue
Centennial, CO 80112
USA
Phone: 303.730.1950
Toll Free: 1.888.506.6887
Fax: 303.730.1966
nb-customerservice@bio-techne.com

Bio-Techne Canada

21 Canmotor Ave
Toronto, ON M8Z 4E6
Canada
Phone: 905.827.6400
Toll Free: 855.668.8722
Fax: 905.827.6402
canada.inquires@bio-techne.com

Bio-Techne Ltd

19 Barton Lane
Abingdon Science Park
Abingdon, OX14 3NB, United Kingdom
Phone: (44) (0) 1235 529449
Free Phone: 0800 37 34 15
Fax: (44) (0) 1235 533420
info.EMEA@bio-techne.com

General Contact Information

www.novusbio.com
Technical Support: nb-technical@bio-techne.com
Orders: nb-customerservice@bio-techne.com
General: novus@novusbio.com

Products Related to NB300-529

HAF007	Goat anti-Mouse IgG Secondary Antibody [HRP]
NB720-B	Rabbit anti-Mouse IgG (H+L) Secondary Antibody [Biotin]
NBP1-97005-0.5mg	Mouse IgG1 Isotype Control (MG1)
NB300-529UV	SERCA2 ATPase Antibody (IID8) [DyLight 350]

Limitations

This product is for research use only and is not approved for use in humans or in clinical diagnosis. Primary Antibodies are guaranteed for 1 year from date of receipt.

For more information on our 100% guarantee, please visit www.novusbio.com/guarantee

Earn gift cards/discounts by submitting a review: www.novusbio.com/reviews/submit/NB300-529

Earn gift cards/discounts by submitting a publication using this product:
www.novusbio.com/publications

