

Product Datasheet

O-GlcNAc Antibody (RL2) [PE] NB300-524PE

Unit Size: 0.1 ml

Store at 4C in the dark.

www.novusbio.com



technical@novusbio.com

Protocols, Publications, Related Products, Reviews, Research Tools and Images at:
www.novusbio.com/NB300-524PE

Updated 10/23/2024 v.20.1

Earn rewards for product
reviews and publications.

Submit a publication at www.novusbio.com/publications

Submit a review at www.novusbio.com/reviews/destination/NB300-524PE



NB300-524PE

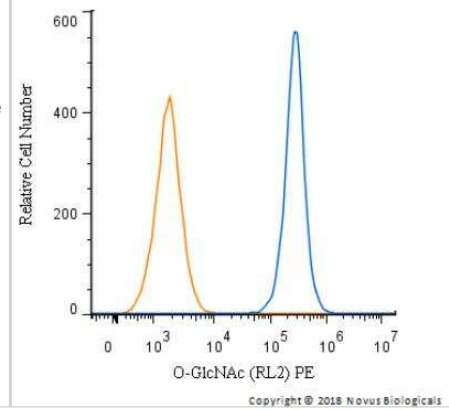
O-GlcNAc Antibody (RL2) [PE]

Product Information	
Unit Size	0.1 ml
Concentration	Please see the vial label for concentration. If unlisted please contact technical services.
Storage	Store at 4C in the dark.
Clonality	Monoclonal
Clone	RL2
Preservative	0.05% Sodium Azide
Isotype	IgG1
Conjugate	PE
Purity	Protein A purified
Buffer	PBS
Product Description	
Host	Mouse
Species	Human, Mouse, Rat, Porcine, Bovine, Drosophila, Fish, Hamster, Primate, Virus, Xenopus
Reactivity Notes	Porcine reactivity reported in scientific literature (PMID: 26004176). Xenopus reactivity reported in scientific literature (PMID: 17329255). Please note that this antibody is reactive to Mouse and derived from the same host, Mouse. Additional Mouse on Mouse blocking steps may be required for IHC and ICC experiments. Please contact Technical Support for more information.
Specificity/Sensitivity	Detects nuclear pore complex (NPC), cytoplasmic and intranuclear O-linked glycoproteins from human, mouse, and rat tissues.
Immunogen	Pore complex-lamina fraction purified from rat liver nuclear envelopes.
Product Application Details	
Applications	Western Blot, Chromatin Immunoprecipitation, Dot Blot, ELISA, Flow Cytometry, Immunocytochemistry/ Immunofluorescence, Immunohistochemistry, Immunohistochemistry-Paraffin, Immunoprecipitation, Chromatin Immunoprecipitation (ChIP)
Recommended Dilutions	Western Blot, Chromatin Immunoprecipitation, Flow Cytometry, ELISA, Immunohistochemistry, Immunocytochemistry/ Immunofluorescence, Immunoprecipitation, Immunohistochemistry-Paraffin, Dot Blot, Chromatin Immunoprecipitation (ChIP)
Application Notes	Optimal dilution of this antibody should be experimentally determined.



Images

Flow Cytometry: O-GlcNAc Antibody (RL2) [PE] [NB300-524PE] - An intracellular stain was performed on Jurkat cells with O-GlcNAc antibody (RL2) NB300-524PE (blue) and a matched isotype control. Cells were fixed with 4% PFA and then permeablized with 0.1% saponin. Cells were incubated in an antibody dilution of 2.5 ug/mL for 30 minutes at room temperature . Both antibodies were conjugated to Phycoerythrin.





Novus Biologicals USA

10730 E. Briarwood Avenue
Centennial, CO 80112
USA
Phone: 303.730.1950
Toll Free: 1.888.506.6887
Fax: 303.730.1966
nb-customerservice@bio-techne.com

Bio-Techne Canada

21 Canmotor Ave
Toronto, ON M8Z 4E6
Canada
Phone: 905.827.6400
Toll Free: 855.668.8722
Fax: 905.827.6402
canada.inquires@bio-techne.com

Bio-Techne Ltd

19 Barton Lane
Abingdon Science Park
Abingdon, OX14 3NB, United Kingdom
Phone: (44) (0) 1235 529449
Free Phone: 0800 37 34 15
Fax: (44) (0) 1235 533420
info.EMEA@bio-techne.com

General Contact Information

www.novusbio.com
Technical Support: nb-technical@bio-techne.com
Orders: nb-customerservice@bio-techne.com
General: novus@novusbio.com

Products Related to NB300-524PE

NBP1-97005PE	Mouse IgG1 Isotype Control (MG1) [PE]
NB300-524UV	O-GlcNAc Antibody (RL2) [DyLight 350]

Limitations

This product is for research use only and is not approved for use in humans or in clinical diagnosis. Primary Antibodies are guaranteed for 1 year from date of receipt.

For more information on our 100% guarantee, please visit www.novusbio.com/guarantee

Earn gift cards/discounts by submitting a review: www.novusbio.com/reviews/submit/NB300-524PE

Earn gift cards/discounts by submitting a publication using this product:
www.novusbio.com/publications

