

Product Datasheet

CFTR Antibody (CF3) NB300-511

Unit Size: 100uL

Store at -20C. Avoid freeze-thaw cycles.

www.novusbio.com



technical@novusbio.com

Reviews: 2 Publications: 15

Protocols, Publications, Related Products, Reviews, Research Tools and Images at:
www.novusbio.com/NB300-511

Updated 10/23/2024 v.20.1

**Earn rewards for product
reviews and publications.**

Submit a publication at www.novusbio.com/publications

Submit a review at www.novusbio.com/reviews/destination/NB300-511

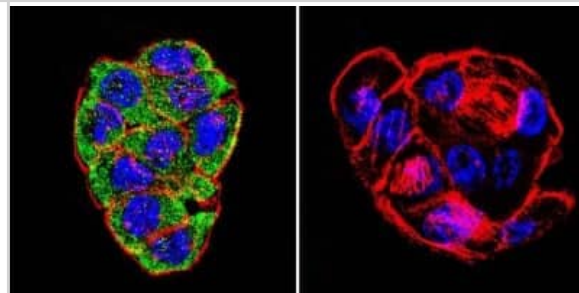


NB300-511**CFTR Antibody (CF3)**

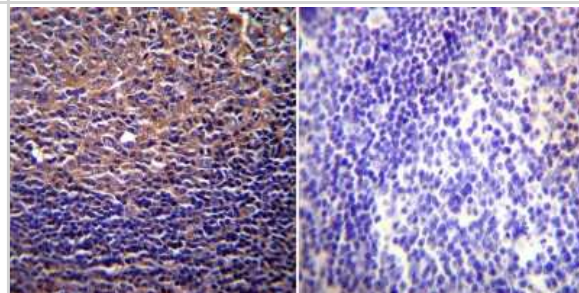
Product Information	
Unit Size	100uL
Concentration	This product is unpurified. The exact concentration of antibody is not quantifiable.
Storage	Store at -20C. Avoid freeze-thaw cycles.
Clonality	Monoclonal
Clone	CF3
Preservative	0.05% Sodium Azide
Isotype	IgM
Purity	Unpurified
Buffer	Ascites
Target Molecular Weight	168 kDa
Product Description	
Host	Mouse
Gene ID	1080
Gene Symbol	CFTR
Species	Human, Mouse, Rat, Chicken, Golden Syrian Hamster
Reactivity Notes	Rat reactivity reported in scientific literature (see product references). Chicken reactivity reported in scientific literature (PMID: 12505864). Please note that this antibody is reactive to Mouse and derived from the same host, Mouse. Additional Mouse on Mouse blocking steps may be required for IHC and ICC experiments. Please contact Technical Support for more information. Use in Golden Syrian Hamster reported in scientific literature (PMID:22534621).
Specificity/Sensitivity	CFTR (CF3)
Immunogen	Synthetic Peptide: G(103) R I I A S Y D P D N K E E R(117)
Product Application Details	
Applications	Western Blot, Flow Cytometry, Immunocytochemistry/ Immunofluorescence, Immunohistochemistry, Immunohistochemistry-Paraffin, Immunoprecipitation, Block/Neutralize
Recommended Dilutions	Western Blot 1:500, Flow Cytometry 1:100, Immunohistochemistry 1:200, Immunocytochemistry/ Immunofluorescence 1:500, Immunoprecipitation 1:10 - 1:500, Immunohistochemistry-Paraffin 1:200, Block/Neutralize
Application Notes	Flow usage reported in literature and validated by a verified customer review. ICC usage reported in literature. IHC usage was reported in scientific literature. Blocking Assay was reported in the scientific literature (PMID: 9590693). WB: Detects an approx. 170 kDa protein. Also detects one or more immunologically related proteins in murine cell line Heb7a that does not contain CFTR mRNA. IF: Staining of CFTR in mouse epithelial cells results in cell surface staining, consistent with localization at the plasma membrane. Inhibit the epithelial uptake of S. typhi in some mouse cell lines.

Images

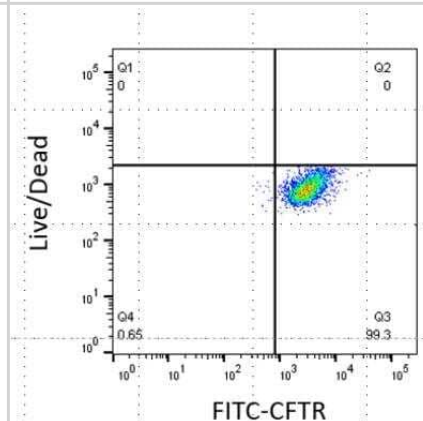
Immunocytochemistry/Immunofluorescence: CFTR Antibody (CF3) [NB300-511] - CFTR staining (green), F-Actin staining with Phalloidin (red) and nuclei with DAPI (blue) is shown. Cells were grown on chamber slides and fixed with formaldehyde prior to staining. Cells were probed without (control) or with or an antibody recognizing CFTR at a dilution of 1:100-1:200 over night at 4C, washed with PBS and incubated with a DyLight 488 conjugated antibody.



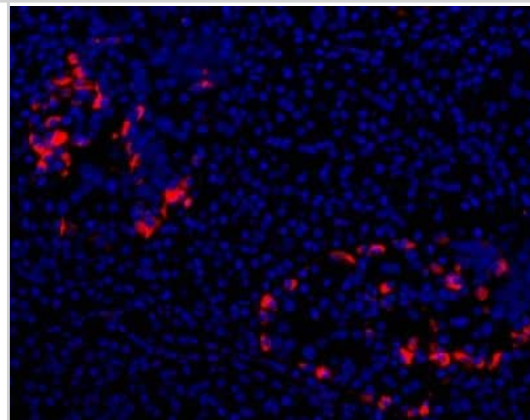
Immunohistochemistry-Paraffin: CFTR Antibody (CF3) [NB300-511] - Normal biopsies of deparaffinized Human tonsil tissue.



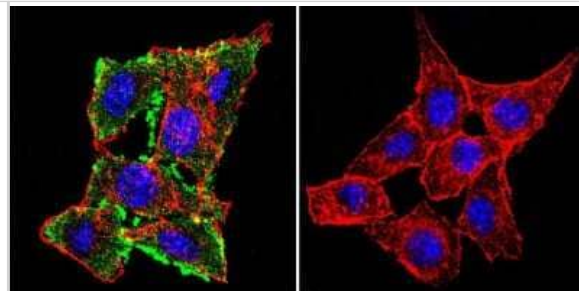
Flow Cytometry: CFTR Antibody (CF3) [NB300-511] - Human airway epithelial cells stained with CFTR (CF3) coupled with goat anti-mouse FITC conjugated secondary antibody. Flow cytometry image submitted by a verified customer review.



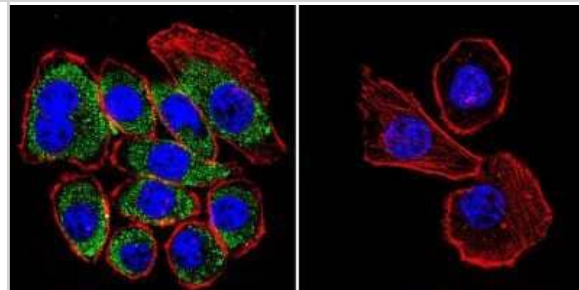
Immunocytochemistry/Immunofluorescence: CFTR Antibody (CF3) [NB300-511] - Staining of human pancreas cryosection (200x). Alpha cells are strongly labeled. ICC/IF image submitted by a verified customer review.



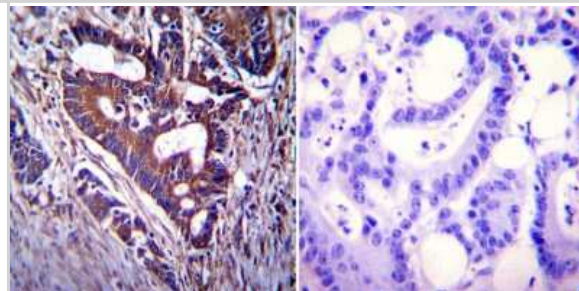
Immunocytochemistry/Immunofluorescence: CFTR Antibody (CF3) [NB300-511] - CFTR staining (green), F-Actin staining with Phalloidin (red) and nuclei with DAPI (blue) is shown. Cells were grown on chamber slides and fixed with formaldehyde prior to staining. Cells were probed without (control) or with or an antibody recognizing CFTR at a dilution of 1:100-1:200 over night at 4C, washed with PBS and incubated with a DyLight 488 conjugated antibody.



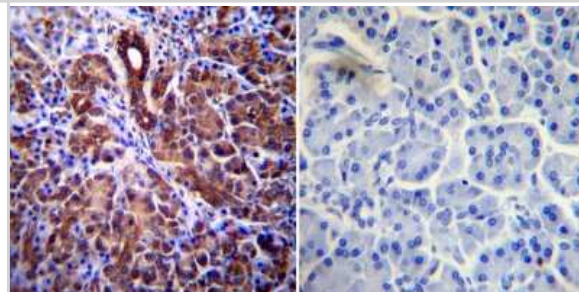
Immunocytochemistry/Immunofluorescence: CFTR Antibody (CF3) [NB300-511] - CFTR staining (green), F-Actin staining with Phalloidin (red) and nuclei with DAPI (blue) is shown. Cells were grown on chamber slides and fixed with formaldehyde prior to staining. Cells were probed without (control) or with or an antibody recognizing CFTR at a dilution of 1:100-1:200 over night at 4C, washed with PBS and incubated with a DyLight 488 conjugated antibody.



Immunohistochemistry-Paraffin: CFTR Antibody (CF3) [NB300-511] - Cancer biopsies of deparaffinized Human colon carcinoma tissue.



Immunohistochemistry-Paraffin: CFTR Antibody (CF3) [NB300-511] - Normal biopsies of deparaffinized Human pancreas tissue.



Publications

Lu LY, Pan N, Huang ZH et al. CFTR Suppresses Neointimal Formation Through Attenuating Proliferation and Migration of Aortic Smooth Muscle Cells *Journal of Cardiovascular Pharmacology* 2022-06-01 [PMID: 35266910] (Western Blot)

Marozkina N, Bosch J, Cotton C et al. Cyclic compression increases F508 Del CFTR expression in ciliated human airway epithelium *American Journal of Physiology-Lung Cellular and Molecular Physiology* 2019-08-01 [PMID: 31116581] (Western Blot)

Mizoguchi M, Takemori H, Furukawa S et al. Increased expression of glucagon-like peptide-1 and cystic fibrosis transmembrane conductance regulator in the ileum and colon in mouse treated with metformin *Endocrine journal* 2022-10-05 [PMID: 36198615] (WB, Human)

Di Fulvio M, Bogdani M, Velasco M et al. Heterogeneous expression of CFTR in insulin-secreting beta-cells of the normal human islet *PLoS one* 2020-12-02 [PMID: 33264332] (ICC/IF, Human)

Meissner A, Yang J et al. Tumor necrosis factor-alpha-mediated downregulation of the cystic fibrosis transmembrane conductance regulator drives pathological sphingosine-1-phosphate signaling in a mouse model of heart failure. *Circulation* 2012-05-06 [PMID: 22534621] (WB, Golden Syrian Hamster)

Ye R, Onodera T, Blanchard PG et al. b1 syntrophin supports autophagy initiation and protects against cerulein-induced acute pancreatitis. *Am. J. Pathol.* 2019-01-14 [PMID: 30653956] (WB, Mouse)

Romani L, Oikonomou V, Moretti S et al. Thymosin alpha1 represents a potential potent single-molecule-based therapy for cystic fibrosis. *Nat. Med.* 2017-04-10 [PMID: 28394330] (IF/IHC, Mouse)

Benlloch, M et al. Acceleration of glutathione efflux inhibition of gamma glutamyl transpeptidase sensitize metastatic B16 melanoma cells to endothelium-induced cytotoxicity. *J Biol Chem* 280(8): 6950-6959. 2005-01-01 [PMID: 15561710]

Rottner M et al. Exaggerated apoptosis and NF-kappaB activation in pancreatic and tracheal cystic fibrosis cells. *FASEB J*;21(11):2939-48. 2007-09-01 [PMID: 17442732] (WB, Human)

Dalby-Payne JR et al. Polarization of specific tropomyosin isoforms in gastrointestinal epithelial cells and their impact on CFTR at the apical surface. *Mol Biol Cell*;14(11):4365-75. 2003-11-01 [PMID: 12960432] (IF/IHC, WB, Human)

Laverty G et al. PTH stimulates a Cl(-)-dependent and EIPA-sensitive current in chick proximal tubule cells in culture. *Am J Physiol Renal Physiol*;284(5):F987-95. 2003-05-01 [PMID: 12505864] (WB, Chicken)

Kulka M, Gilchrist M, Duszyk M, Befus AD. Expression and functional characterization of CFTR in mast cells. *J Leukoc Biol*;71(1):54-64. 2002-01-01 [PMID: 11781380] (FLOW, ICC/IF, Rat, Human)

More publications at <http://www.novusbio.com/NB300-511>





Novus Biologicals USA

10730 E. Briarwood Avenue
Centennial, CO 80112
USA
Phone: 303.730.1950
Toll Free: 1.888.506.6887
Fax: 303.730.1966
nb-customerservice@bio-techne.com

Bio-Techne Canada

21 Canmotor Ave
Toronto, ON M8Z 4E6
Canada
Phone: 905.827.6400
Toll Free: 855.668.8722
Fax: 905.827.6402
canada.inquires@bio-techne.com

Bio-Techne Ltd

19 Barton Lane
Abingdon Science Park
Abingdon, OX14 3NB, United Kingdom
Phone: (44) (0) 1235 529449
Free Phone: 0800 37 34 15
Fax: (44) (0) 1235 533420
info.EMEA@bio-techne.com

General Contact Information

www.novusbio.com
Technical Support: nb-technical@bio-techne.com
Orders: nb-customerservice@bio-techne.com
General: novus@novusbio.com

Products Related to NB300-511

HAF007	Goat anti-Mouse IgG Secondary Antibody [HRP]
NB720-B	Rabbit anti-Mouse IgG (H+L) Secondary Antibody [Biotin]
NBP2-62224	Mouse IgM Isotype Control (PFR-03)
H00001080-Q01-10ug	Recombinant Human CFTR GST (N-Term) Protein

Limitations

This product is for research use only and is not approved for use in humans or in clinical diagnosis. Primary Antibodies are guaranteed for 1 year from date of receipt.

For more information on our 100% guarantee, please visit www.novusbio.com/guarantee

Earn gift cards/discounts by submitting a review: www.novusbio.com/reviews/submit/NB300-511

Earn gift cards/discounts by submitting a publication using this product:
www.novusbio.com/publications

