

Product Datasheet

GAPDH Antibody NB300-326

Unit Size: 0.1 ml

Store at 4C. Do not freeze.

www.novusbio.com



technical@novusbio.com

Reviews: 1 Publications: 3

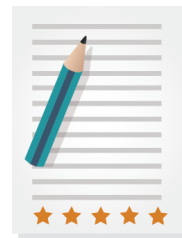
Protocols, Publications, Related Products, Reviews, Research Tools and Images at:
www.novusbio.com/NB300-326

Updated 4/13/2025 v.20.1

**Earn rewards for product
reviews and publications.**

Submit a publication at www.novusbio.com/publications

Submit a review at www.novusbio.com/reviews/destination/NB300-326



NB300-326**GAPDH Antibody****Product Information**

Unit Size	0.1 ml
Concentration	0.2 mg/ml
Storage	Store at 4C. Do not freeze.
Clonality	Polyclonal
Preservative	0.09% Sodium Azide
Isotype	IgG
Purity	Immunogen affinity purified
Buffer	TBS and 0.1% BSA
Target Molecular Weight	36 kDa

Product Description

Host	Rabbit
Gene ID	2597
Gene Symbol	GAPDH
Species	Human, Mouse
Reactivity Notes	Mouse. In tests of lysate from HeLa cells, reactivity with Human GAPDH was weak. Human reactivity reported in scientific literature (PMID: 27602114).
Marker	Cytosolic Marker
Immunogen	This GAPDH antibody was developed against an epitope between residue 300 and the C-terminus of mouse GAPDH using the numbering given in entry NP_001001303.1 (GeneID 407972).

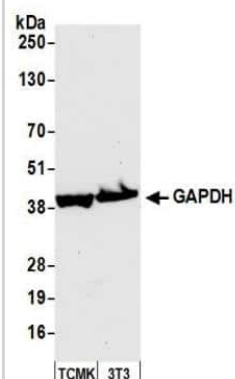
Product Application Details

Applications	Western Blot, Simple Western, Immunohistochemistry, Immunoprecipitation, Immunoprecipitation (Negative)
Recommended Dilutions	Western Blot 1:5000, Simple Western 1:25, Immunohistochemistry, Immunoprecipitation, Immunoprecipitation (Negative)
Application Notes	<p>This GAPDH antibody is useful for Western blot, where a band is observed approx. 36 kDa. The antibody does not work in Immunoprecipitation.</p> <p>In Simple Western only 10 - 15 uL of the recommended dilution is used per data point.</p> <p>See Simple Western Antibody Database for Simple Western validation: Tested in HeLa lysate 1.0 mg/mL, separated by Size, antibody dilution of 1:25, apparent MW was 42 kDa. Separated by Size-Wes, Sally Sue/Peggy Sue.</p> <p>The observed molecular weight of the protein may vary from the listed predicted molecular weight due to post translational modifications, post translation cleavages, relative charges, and other experimental factors.</p>

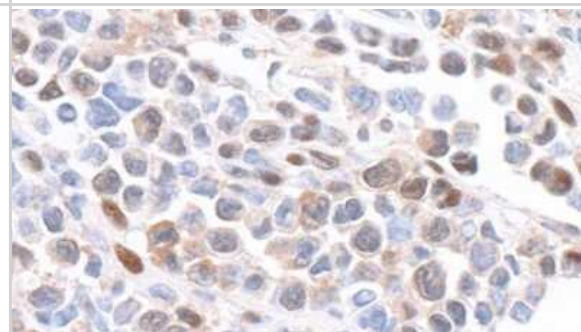


Images

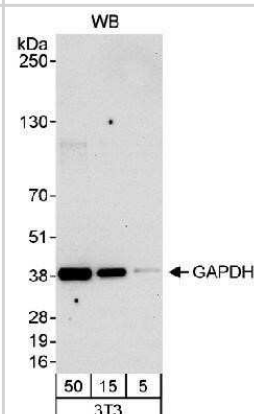
Western Blot: GAPDH Antibody [NB300-326] - Detection of mouse GAPDH by western blot. Samples: Whole cell lysate (50 ug) from TCMK-1 and NIH 3T3 cells prepared using NETN lysis buffer. Antibody: Affinity purified rabbit anti-GAPDH antibody NB300-326 used for WB at 0.04 ug/ml. Detection: Chemiluminescence with an exposure time of 10 seconds.



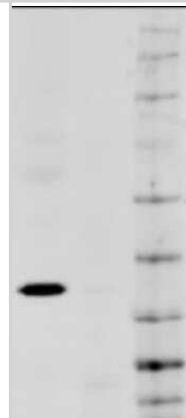
Immunohistochemistry: GAPDH Antibody [NB300-326] - Detection of mouse GAPDH by immunohistochemistry. Sample: FFPE section of mouse plasmacytoma. Antibody: Affinity purified rabbit anti-GAPDH (NB300-326). Detection: DAB



Western Blot: GAPDH Antibody [NB300-326] - Detection of Mouse GAPDH Whole cell lysate (5, 15 and 50 ug) from mouse NIH3T3 cells. Affinity purified rabbit anti-GAPDH antibody used at 0.04 ug/ml. Theoretical molecular weight: 36 kDa.



Western Blot: GAPDH Antibody [NB300-326] - Detection of GAPDH in nu/nu Mouse cells. 5% BSA in PBS, 1:5,000. Secondary: Goat anti-Rabbit IgG 1:5,000. This image was submitted via customer Review.



Simple Western: GAPDH Antibody [NB300-326] - Simple Western lane view shows a specific band for GAPDH in 1.0 mg/ml of HeLa lysate. This experiment was performed under reducing conditions using the 12-230kDa separation system.



Publications

Santos MF, Rappa G, Karbanov J et al. HIV-1-induced nuclear invaginations mediated by VAP-A, ORP3, and Rab7 complex explain infection of activated T cells Nature Communications 2023-08-10 [PMID: 37563144]

Cao Y, Wang X, Xu C et al. 4-HPR impairs bladder cancer cell migration and invasion by interfering with the Wnt5a/JNK and Wnt5a/MMP-2 signaling pathways. Oncol Lett. 2016-09-01 [PMID: 27602114] (WB, Human)

Details:

This citation used the HRP version of this antibody.

Monteiro da Rocha A, Ding J, Slawny N et al. Loss of glycogen synthase kinase 3 isoforms during murine oocyte growth induces offspring cardiac dysfunction. Biol Reprod 2015-05-01 [PMID: 25833158] (Mouse)



Novus Biologicals USA

10730 E. Briarwood Avenue
Centennial, CO 80112
USA
Phone: 303.730.1950
Toll Free: 1.888.506.6887
Fax: 303.730.1966
nb-customerservice@bio-techne.com

Bio-Techne Canada

21 Canmotor Ave
Toronto, ON M8Z 4E6
Canada
Phone: 905.827.6400
Toll Free: 855.668.8722
Fax: 905.827.6402
canada.inquires@bio-techne.com

Bio-Techne Ltd

19 Barton Lane
Abingdon Science Park
Abingdon, OX14 3NB, United Kingdom
Phone: (44) (0) 1235 529449
Free Phone: 0800 37 34 15
Fax: (44) (0) 1235 533420
info.EMEA@bio-techne.com

General Contact Information

www.novusbio.com
Technical Support: nb-technical@bio-techne.com
Orders: nb-customerservice@bio-techne.com
General: novus@novusbio.com

Products Related to NB300-326

NBL1-10967	GAPDH Overexpression Lysate
HAF008	Goat anti-Rabbit IgG Secondary Antibody [HRP]
NB7160	Goat anti-Rabbit IgG (H+L) Secondary Antibody [HRP]
NBP2-24891	Rabbit IgG Isotype Control

Limitations

This product is for research use only and is not approved for use in humans or in clinical diagnosis. Primary Antibodies are guaranteed for 1 year from date of receipt.

For more information on our 100% guarantee, please visit www.novusbio.com/guarantee

Earn gift cards/discounts by submitting a review: www.novusbio.com/reviews/submit/NB300-326

Earn gift cards/discounts by submitting a publication using this product:
www.novusbio.com/publications

