

Product Datasheet

PLK1 [p Ser482, p Ser486, p Ser490] Antibody - Azide Free NB300-278

Unit Size: 0.1 ml

Store at -20C. Avoid freeze-thaw cycles.

www.novusbio.com



technical@novusbio.com

Publications: 3

Protocols, Publications, Related Products, Reviews, Research Tools and Images at:
www.novusbio.com/NB300-278

Updated 2/21/2025 v.20.1

Earn rewards for product
reviews and publications.

Submit a publication at www.novusbio.com/publications

Submit a review at www.novusbio.com/reviews/destination/NB300-278



NB300-278

PLK1 [p Ser482, p Ser486, p Ser490] Antibody - Azide Free

Product Information

Unit Size	0.1 ml
Concentration	Please see the vial label for concentration. If unlisted please contact technical services.
Storage	Store at -20C. Avoid freeze-thaw cycles.
Clonality	Polyclonal
Preservative	No Preservative
Isotype	IgG
Purity	Antigen Affinity-purified
Buffer	10mM HEPES (pH 7.5), 0.15M NaCl, 0.1 mg/ml BSA and 50% Glycerol
Target Molecular Weight	120 kDa

Product Description

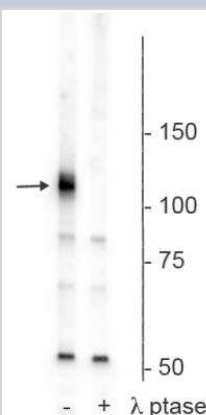
Host	Rabbit
Gene ID	5347
Gene Symbol	PLK1
Species	Rat, Xenopus
Marker	Mitosis Marker
Specificity/Sensitivity	Specific for endogenous levels of the ~120k PLK1 protein phosphorylated at Ser482,486,490.
Immunogen	Synthetic phospho-peptide corresponding to amino acid residues surrounding Ser482/486/490 conjugated to KLH. Accession # P70032

Product Application Details

Applications	Western Blot
Recommended Dilutions	Western Blot 1:1000

Images

Western Blot: PLK1 [p Ser482, p Ser486, p Ser490] Antibody [NB300-278] - Analysis of rat hippocampal membrane lysate showing specific immunolabeling of the ~120 kDa Polo-Like Kinase Kinase phosphorylated at Ser482,486,490 in the first lane (-). Phosphospecificity is shown in the second lane (+) where the immunolabeling is completely eliminated by blot treatment with lambda phosphatase.



Publications

Liu J, Lewellyn AL, Chen LG, Maller JL. The polo box is required for multiple functions of Plx1 in mitosis. *Chem* 279:21367-21373. [PMID: 15016807]

Kumagai A, Dunphy WG. Purification and molecular cloning of Plx1, a Cdc25-regulatory kinase from *Xenopus* egg extracts. *Science* 273:1377-1380. [PMID: 8703070]

Erikson E, Haystead TA, Qian YW, Maller JL. A feedback loop in the polo-like kinase activation pathway. *Biol Chem* 279:32219-32224. 2004-01-01 [PMID: 15166215]





Novus Biologicals USA

10730 E. Briarwood Avenue
Centennial, CO 80112
USA
Phone: 303.730.1950
Toll Free: 1.888.506.6887
Fax: 303.730.1966
nb-customerservice@bio-techne.com

Bio-Techne Canada

21 Canmotor Ave
Toronto, ON M8Z 4E6
Canada
Phone: 905.827.6400
Toll Free: 855.668.8722
Fax: 905.827.6402
canada.inquires@bio-techne.com

Bio-Techne Ltd

19 Barton Lane
Abingdon Science Park
Abingdon, OX14 3NB, United Kingdom
Phone: (44) (0) 1235 529449
Free Phone: 0800 37 34 15
Fax: (44) (0) 1235 533420
info.EMEA@bio-techne.com

General Contact Information

www.novusbio.com
Technical Support: nb-technical@bio-techne.com
Orders: nb-customerservice@bio-techne.com
General: novus@novusbio.com

Products Related to NB300-278

HAF008	Goat anti-Rabbit IgG Secondary Antibody [HRP]
NB7160	Goat anti-Rabbit IgG (H+L) Secondary Antibody [HRP]
NBP2-24891	Rabbit IgG Isotype Control
NBP2-49074PEP	PLK1 Recombinant Protein Antigen

Limitations

This product is for research use only and is not approved for use in humans or in clinical diagnosis. Primary Antibodies are guaranteed for 1 year from date of receipt.

For more information on our 100% guarantee, please visit www.novusbio.com/guarantee

Earn gift cards/discounts by submitting a review: www.novusbio.com/reviews/submit/NB300-278

Earn gift cards/discounts by submitting a publication using this product:
www.novusbio.com/publications

