

Product Datasheet

CREB [p Ser133] Antibody - Azide Free NB300-273

Unit Size: 0.1 ml

Store at -20C. Avoid freeze-thaw cycles.

www.novusbio.com



technical@novusbio.com

Publications: 10

Protocols, Publications, Related Products, Reviews, Research Tools and Images at:
www.novusbio.com/NB300-273

Updated 2/21/2025 v.20.1

Earn rewards for product
reviews and publications.

Submit a publication at www.novusbio.com/publications

Submit a review at www.novusbio.com/reviews/destination/NB300-273

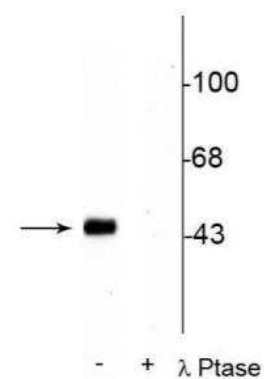


NB300-273**CREB [p Ser133] Antibody - Azide Free**

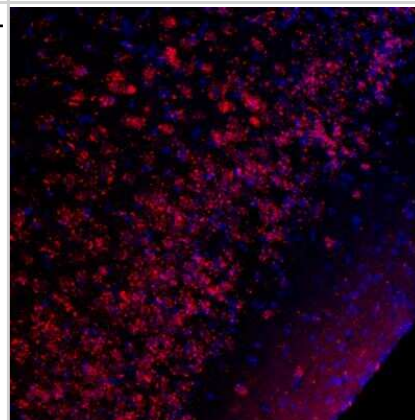
Product Information	
Unit Size	0.1 ml
Concentration	Please see the vial label for concentration. If unlisted please contact technical services.
Storage	Store at -20C. Avoid freeze-thaw cycles.
Clonality	Polyclonal
Preservative	No Preservative
Isotype	IgG
Purity	Antigen Affinity-purified
Buffer	10mM HEPES (pH 7.5), 0.15M NaCl, 0.1 mg/ml BSA and 50% Glycerol
Target Molecular Weight	45 kDa
Product Description	
Host	Rabbit
Gene ID	1385
Gene Symbol	CREB1
Species	Mouse, Rat
Reactivity Notes	Use in Rat reported in scientific literature (PMID:34346292). Mouse reactivity reported in scientific literature (PMID: 21838783). .
Specificity/Sensitivity	Specific for endogenous levels of the ~45 kDa CREB protein phosphorylated at Ser133. Immunolabeling is completely eliminated by treatment with lambda-phosphatase.
Immunogen	Synthetic phospho-peptide corresponding to amino acid residues surrounding Ser133 conjugated to KLH. Accession # P15337
Product Application Details	
Applications	Western Blot, Immunohistochemistry, Immunohistochemistry-Frozen
Recommended Dilutions	Western Blot 1:1000, Immunohistochemistry, Immunohistochemistry-Frozen 1:1000
Application Notes	This antibody has not been validated for use in paraffin embedded sections (IHC-P). For IHC-Fr, the antibody was used at 1:1000 and incubated for 48 hours at 4C. The dilution buffer used was 0.1M PBS, 0.5% Triton-100, and 3% normal serum. No antigen retrieval step was performed.

Images

Western Blot: CREB [p Ser133] Antibody [NB300-273] - Rat hippocampal lysate stimulated with forskolin showing specific immunolabeling of the ~45 kDa CREB phosphorylated at Ser133 in the first lane (-). Phosphospecificity is shown in the second lane (+) where immunolabeling is completely eliminated by lysate treatment with lambda phosphatase lambda-Ptase, 800 units/1mg protein for 30 min).



Immunohistochemistry-Frozen: CREB [p Ser133] Antibody [NB300-273] - IHC Analysis of pCREB S133 (red) in frozen sections from mouse piriform cortex. Cell nuclei are visualized with DAPI DNA stain (blue). NB300-273 was used at a dilution of 1:1000 and incubated for 48 hours at 4C. No antigen retrieval step was performed.



Publications

Costa DVS, Shin JH, Goldbeck SM et al. Adenosine receptors differentially mediate enteric glial cell death induced by Clostridioides difficile Toxins A and B Frontiers in immunology 2023-01-16 [PMID: 36726986] (WB, Rat)

Details:

Dilutions: 1:500

Strand E, Hollas H, Sakya SA Et al. Annexin A2 binds the internal ribosomal entry site of c-myc mRNA and regulates its translation RNA biology 2021-08-04 [PMID: 34346292] (WB, Rat)

Wall AM, Corcoran AE, O'Halloran KD, O'Connor JJ. Effects of prolyl-hydroxylase inhibition and chronic intermittent hypoxia on synaptic transmission and plasticity in the rat CA1 and dentate gyrus. Neurobiol Dis. 2013-09-17 [PMID: 24055213] (WB, Rat)

Shaywitz AJ, Greenberg ME. CREB: a stimulus-induced transcription factor activated by a diverse array of extracellular signals. Annu Rev Biochem 68:821-861. [PMID: 10872467]

Karin M, Hunter T. Transcriptional control by protein phosphorylation: signal transmission from the cell surface to the nucleus. Curr Biol 5:747-757. [PMID: 7583121]

Kornhauser JM, Cowan CW, Shaywitz AJ, Dolmetsch RE, Griffith EC, Hu LS, Haddad C, Xia ZG, Greenberg ME. CREB transcriptional activity in neurons is regulated by multiple, calcium-specific phosphorylation events. Neuron 34:221-233. 2002-01-01 [PMID: 11970864]

Silva AJ, Kogan JH, Frankl PW, Kida S. CREB memory. Annu Rev Neurosci 21:127-148. 1998-01-01 [PMID: 9530494]

Montminy M. Transcriptional regulation by cyclic AMP. Annu Rev Biochem 66:807-822. 1997-01-01 [PMID: 9242925]

Johannessen M, Delghandi MP, Moens U. What turns CREB on? . Cell Signal;16(11):1211-27. 2004-11-01 [PMID: 15337521]

Schneider A, Mehmood T, Pannetier S, Hanauer A. Altered ERK/MAPK signaling in the hippocampus of the mrsk2_KO mouse model of Coffin-Lowry syndrome. J Neurochem. 2011-08-12 [PMID: 21838783] (WB, Mouse)



Novus Biologicals USA

10730 E. Briarwood Avenue
Centennial, CO 80112
USA
Phone: 303.730.1950
Toll Free: 1.888.506.6887
Fax: 303.730.1966
nb-customerservice@bio-techne.com

Bio-Techne Canada

21 Canmotor Ave
Toronto, ON M8Z 4E6
Canada
Phone: 905.827.6400
Toll Free: 855.668.8722
Fax: 905.827.6402
canada.inquires@bio-techne.com

Bio-Techne Ltd

19 Barton Lane
Abingdon Science Park
Abingdon, OX14 3NB, United Kingdom
Phone: (44) (0) 1235 529449
Free Phone: 0800 37 34 15
Fax: (44) (0) 1235 533420
info.EMEA@bio-techne.com

General Contact Information

www.novusbio.com
Technical Support: nb-technical@bio-techne.com
Orders: nb-customerservice@bio-techne.com
General: novus@novusbio.com

Products Related to NB300-273

HAF008	Goat anti-Rabbit IgG Secondary Antibody [HRP]
NB7160	Goat anti-Rabbit IgG (H+L) Secondary Antibody [HRP]
NBP2-24891	Rabbit IgG Isotype Control
H00001385-P01-10ug	Recombinant Human CREB GST (N-Term) Protein

Limitations

This product is for research use only and is not approved for use in humans or in clinical diagnosis. Primary Antibodies are guaranteed for 1 year from date of receipt.

For more information on our 100% guarantee, please visit www.novusbio.com/guarantee

Earn gift cards/discounts by submitting a review: www.novusbio.com/reviews/submit/NB300-273

Earn gift cards/discounts by submitting a publication using this product:
www.novusbio.com/publications

