

Product Datasheet

SLC6A3/DAT1 Antibody - Azide Free NB300-255

Unit Size: 0.1 ml

Store at -20C. Avoid freeze-thaw cycles.

www.novusbio.com



technical@novusbio.com

Protocols, Publications, Related Products, Reviews, Research Tools and Images at:
www.novusbio.com/NB300-255

Updated 2/21/2025 v.20.1

Earn rewards for product
reviews and publications.

Submit a publication at www.novusbio.com/publications

Submit a review at www.novusbio.com/reviews/destination/NB300-255

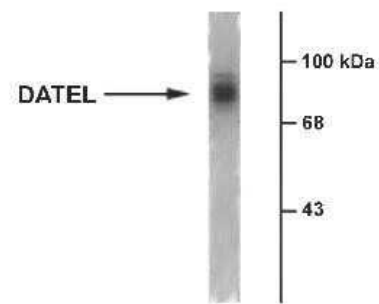


NB300-255**SLC6A3/DAT1 Antibody - Azide Free**

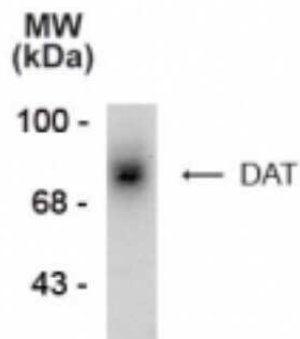
Product Information	
Unit Size	0.1 ml
Concentration	Please see the vial label for concentration. If unlisted please contact technical services.
Storage	Store at -20C. Avoid freeze-thaw cycles.
Clonality	Polyclonal
Preservative	No Preservative
Isotype	IgG
Purity	Antigen Affinity-purified
Buffer	10mM HEPES (pH 7.5), 0.15M NaCl, 0.1 mg/ml BSA and 50% Glycerol
Target Molecular Weight	80 kDa
Product Description	
Host	Rabbit
Gene ID	6531
Gene Symbol	SLC6A3
Species	Human, Primate
Reactivity Notes	The antibody has been tested in Western blots of SDS-solubilized human striatal samples and in IHC applications with formaldehyde-fixed human and monkey brain sections.
Specificity/Sensitivity	Specific for endogenous levels of the ~80 kDa SLC6A3/DAT1 protein. Diffuse band may be observed between ~70-85 kDa due to variable glycosylation.
Immunogen	Synthetic peptide corresponding to amino acid residues from the extracellular loop 2 region conjugated to KLH. Accession # Q01959
Product Application Details	
Applications	Western Blot, Immunohistochemistry, Immunohistochemistry-Frozen
Recommended Dilutions	Western Blot 1:1000, Immunohistochemistry 1:10-1:500, Immunohistochemistry-Frozen 1:1000

Images

Western Blot: DAT1 Antibody [NB300-255] - Detection of DAT protein in human caudate sample using NB 300-255.



Western Blot: DAT1 Antibody [NB300-255] - Western blot analysis of DAT1 in SDS-solubilized human caudate using NB300-255 at 1:1000.





Novus Biologicals USA

10730 E. Briarwood Avenue
Centennial, CO 80112
USA
Phone: 303.730.1950
Toll Free: 1.888.506.6887
Fax: 303.730.1966
nb-customerservice@bio-techne.com

Bio-Techne Canada

21 Canmotor Ave
Toronto, ON M8Z 4E6
Canada
Phone: 905.827.6400
Toll Free: 855.668.8722
Fax: 905.827.6402
canada.inquires@bio-techne.com

Bio-Techne Ltd

19 Barton Lane
Abingdon Science Park
Abingdon, OX14 3NB, United Kingdom
Phone: (44) (0) 1235 529449
Free Phone: 0800 37 34 15
Fax: (44) (0) 1235 533420
info.EMEA@bio-techne.com

General Contact Information

www.novusbio.com
Technical Support: nb-technical@bio-techne.com
Orders: nb-customerservice@bio-techne.com
General: novus@novusbio.com

Products Related to NB300-255

HAF008	Goat anti-Rabbit IgG Secondary Antibody [HRP]
NB7160	Goat anti-Rabbit IgG (H+L) Secondary Antibody [HRP]
NBP2-24891	Rabbit IgG Isotype Control
H00006531-Q01-10ug	Recombinant Human SLC6A3/DAT1 GST (N-Term) Protein

Limitations

This product is for research use only and is not approved for use in humans or in clinical diagnosis. Primary Antibodies are guaranteed for 1 year from date of receipt.

For more information on our 100% guarantee, please visit www.novusbio.com/guarantee

Earn gift cards/discounts by submitting a review: www.novusbio.com/reviews/submit/NB300-255

Earn gift cards/discounts by submitting a publication using this product:
www.novusbio.com/publications

