

Product Datasheet

Collagen XXV alpha 1 Antibody - BSA Free NB300-248

Unit Size: 0.1 mg

Store at 4C short term. Aliquot and store at -20C long term. Avoid freeze-thaw cycles.

www.novusbio.com



technical@novusbio.com

Protocols, Publications, Related Products, Reviews, Research Tools and Images at:
www.novusbio.com/NB300-248

Updated 9/9/2025 v.20.1

Earn rewards for product
reviews and publications.

Submit a publication at www.novusbio.com/publications

Submit a review at www.novusbio.com/reviews/destination/NB300-248



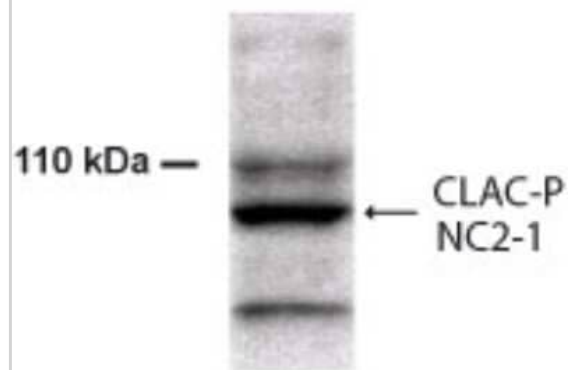
NB300-248

Collagen XXV alpha 1 Antibody - BSA Free

Product Information	
Unit Size	0.1 mg
Concentration	1 mg/ml
Storage	Store at 4C short term. Aliquot and store at -20C long term. Avoid freeze-thaw cycles.
Clonality	Polyclonal
Preservative	0.02% Sodium Azide
Isotype	IgG
Purity	Immunogen affinity purified
Buffer	PBS
Target Molecular Weight	80 kDa
Product Description	
Description	Novus Biologicals Rabbit Collagen XXV alpha 1 Antibody - BSA Free (NB300-248) is a polyclonal antibody validated for use in WB. All Novus Biologicals antibodies are covered by our 100% guarantee.
Host	Rabbit
Gene ID	84570
Gene Symbol	COL25A1
Species	Human, Mouse
Reactivity Notes	Human and mouse. Other species have not been tested.
Specificity/Sensitivity	Reacts with residues 155-169 [KGEQGDQGPRMVFPK] of the NC2-2 region of human and mouse CLAC-P. Detects bands of 50, 70 and 100 kDa in SPs of AD brain, but not in diffuse plaques of non-demented aged individuals, diffuse deposits in sub-cortical structures and cerebellum in AD nor in cerebral amyloid angiopathy
Immunogen	A synthetic peptide mapping to residues 155-169 [KGEQGDQGPRMVFPK] of the NC2-2 region of human and mouse CLAC-P.
Product Application Details	
Applications	Western Blot
Recommended Dilutions	Western Blot 1:100-1:2000
Application Notes	<p>Western blot - Use at 1:500 dilution. This antibody has only been tested in Western Blot. The investigator should determine the optimal dilution for a specific application such as immunohistochemistry.</p> <p>The observed molecular weight of the protein may vary from the listed predicted molecular weight due to post translational modifications, post translation cleavages, relative charges, and other experimental factors.</p>

Images

Western Blot: Collagen XXV Antibody [NB300-248] - Analysis of NC2-2 region of human and mouse CLAC-P. Detects bands of 50, 70 and 100 kDa in SPs of Alzheimer diseased brain.





Novus Biologicals USA

10730 E. Briarwood Avenue
Centennial, CO 80112
USA
Phone: 303.730.1950
Toll Free: 1.888.506.6887
Fax: 303.730.1966
nb-customerservice@bio-techne.com

Bio-Techne Canada

21 Canmotor Ave
Toronto, ON M8Z 4E6
Canada
Phone: 905.827.6400
Toll Free: 855.668.8722
Fax: 905.827.6402
canada.inquires@bio-techne.com

Bio-Techne Ltd

19 Barton Lane
Abingdon Science Park
Abingdon, OX14 3NB, United Kingdom
Phone: (44) (0) 1235 529449
Free Phone: 0800 37 34 15
Fax: (44) (0) 1235 533420
info.EMEA@bio-techne.com

General Contact Information

www.novusbio.com
Technical Support: nb-technical@bio-techne.com
Orders: nb-customerservice@bio-techne.com
General: novus@novusbio.com

Products Related to NB300-248

NBL1-09352	Collagen XXV alpha 1 Overexpression Lysate
NBP2-33376H	Blue Marker Antibody (6F4-F6) [HRP]
HAF008	Goat anti-Rabbit IgG Secondary Antibody [HRP]
NB7160	Goat anti-Rabbit IgG (H+L) Secondary Antibody [HRP]
NBP2-24891	Rabbit IgG Isotype Control

Limitations

This product is for research use only and is not approved for use in humans or in clinical diagnosis. Primary Antibodies are guaranteed for 1 year from date of receipt.

For more information on our 100% guarantee, please visit www.novusbio.com/guarantee

Earn gift cards/discounts by submitting a review: www.novusbio.com/reviews/submit/NB300-248

Earn gift cards/discounts by submitting a publication using this product:
www.novusbio.com/publications

