

Product Datasheet

mGluR6 Antibody - BSA Free

NB300-189

Unit Size: 0.1 ml

Store at -20C. Avoid freeze-thaw cycles.

www.novusbio.com



technical@novusbio.com

Publications: 6

Protocols, Publications, Related Products, Reviews, Research Tools and Images at:
www.novusbio.com/NB300-189

Updated 2/21/2025 v.20.1

Earn rewards for product
reviews and publications.

Submit a publication at www.novusbio.com/publications

Submit a review at www.novusbio.com/reviews/destination/NB300-189



NB300-189

mGluR6 Antibody - BSA Free

Product Information	
Unit Size	0.1 ml
Concentration	1 mg/ml
Storage	Store at -20C. Avoid freeze-thaw cycles.
Clonality	Polyclonal
Preservative	0.02% Sodium Azide
Isotype	IgG
Purity	Immunogen affinity purified
Buffer	PBS
Target Molecular Weight	96 kDa

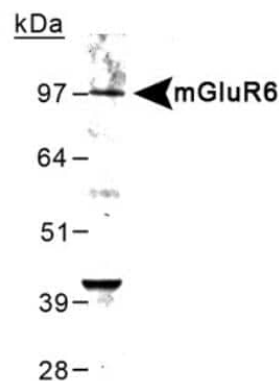
Product Description	
Host	Rabbit
Gene ID	2916
Gene Symbol	GRM6
Species	Mouse, Rat
Reactivity Notes	Reactivity has been poor on human brain tissue.
Immunogen	C-terminus of rat metabotropic Glutamate Receptor 6 (mGluR6) [Uniprot: P35349]

Product Application Details	
Applications	Western Blot, Immunocytochemistry/ Immunofluorescence, Immunohistochemistry, Immunohistochemistry-Frozen
Recommended Dilutions	Western Blot 1:1000, Immunohistochemistry, Immunocytochemistry/ Immunofluorescence 1:100-1:500, Immunohistochemistry-Frozen
Application Notes	In Western blot, a band is seen at ~96 kDa. Neurons of expected brain regions stain well

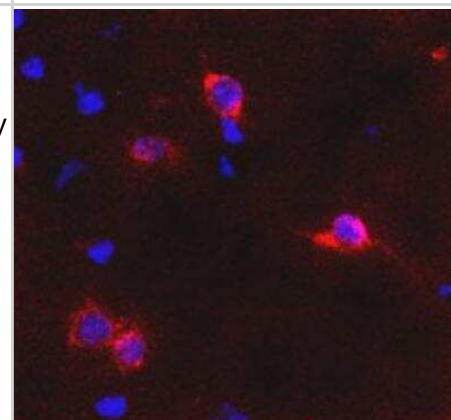


Images

Western Blot: metabotropic Glutamate Receptor 6 Antibody [NB300-189]
- Detection of metabotropic Glutamate Receptor 6 in mouse brain lysate at 0.5 ug/ml.



Immunocytochemistry/Immunofluorescence: mGluR6 Antibody [NB300-189] - metabotropic Glutamate Receptor 6 Antibody [NB300-189] - Detection of metabotropic Glutamate Receptor 6 in trapezoid body in mouse brain using NB300-189 and anti-rabbit Cy3 conjugated secondary antibodies (red). DAPI was used to counterstain cell nuclei.



Publications

Elisabetta Catalani, Silvia Bongiorno, Anna Rita Taddei, Marta Mezzetti, Federica Silvestri, Marco Coazzoli, Silvia Zecchini, Matteo Giovarelli, Cristiana Perrotta, Clara De Palma, Emilio Clementi, Marcello Ceci, Giorgio Prantera, Davide Cervia Defects of full-length dystrophin trigger retinal neuron damage and synapse alterations by disrupting functional autophagy Cellular and Molecular Life Sciences 2020-08-04 [PMID: 32749504]

Yang, Y, Liu, W Et al. Tmem30a deficiency leads to retinal rod bipolar cell degeneration. J Neurochem 2019-02-01 [PMID: 30548540] (WB, Human)

Fan Y, Lai J, Yuan Y et al. Taurine Protects Retinal Cells and Improves Synaptic Connections in Early Diabetic Rats Curr. Eye Res. 2020-01-01 [PMID: 31404506]

Toya S, Takatsuru Y, Kokubo M et al. Early-life-stress affects the homeostasis of glutamatergic synapses. Eur J Neurosci. 2014-09-13 [PMID: 25220177]

Gu L, Liang X, Wang L, Yan Y, Ni Z, Dai H, Gao J, Mou S, Wang Q, Chen X, Wang L, Qian J. Functional metabotropic glutamate receptors 1 and 5 are expressed in murine podocytes. Kidney Int;81(5):458-68. 2012-03-01 [PMID: 22166849] (WB, IHC-Fr, Mouse)

Takada Y, Vijayasathay C, Zeng Y, Kjellstrom S, Bush RA, Sieving PA. Synaptic pathology in retinoschisis knockout (Rs1-/y) mouse retina and modification by rAAV-Rs1 gene delivery. Invest Ophthalmol Vis Sci;49(8):3677-86. 2008-08-01 [PMID: 18660429] (IHC-Fr, Mouse)



Novus Biologicals USA

10730 E. Briarwood Avenue
Centennial, CO 80112
USA
Phone: 303.730.1950
Toll Free: 1.888.506.6887
Fax: 303.730.1966
nb-customerservice@bio-techne.com

Bio-Techne Canada

21 Canmotor Ave
Toronto, ON M8Z 4E6
Canada
Phone: 905.827.6400
Toll Free: 855.668.8722
Fax: 905.827.6402
canada.inquires@bio-techne.com

Bio-Techne Ltd

19 Barton Lane
Abingdon Science Park
Abingdon, OX14 3NB, United Kingdom
Phone: (44) (0) 1235 529449
Free Phone: 0800 37 34 15
Fax: (44) (0) 1235 533420
info.EMEA@bio-techne.com

General Contact Information

www.novusbio.com
Technical Support: nb-technical@bio-techne.com
Orders: nb-customerservice@bio-techne.com
General: novus@novusbio.com

Products Related to NB300-189

NB300-189PEP	mGluR6 Antibody Blocking Peptide
HAF008	Goat anti-Rabbit IgG Secondary Antibody [HRP]
NB7160	Goat anti-Rabbit IgG (H+L) Secondary Antibody [HRP]
NBP2-24891	Rabbit IgG Isotype Control

Limitations

This product is for research use only and is not approved for use in humans or in clinical diagnosis. Primary Antibodies are guaranteed for 1 year from date of receipt.

For more information on our 100% guarantee, please visit www.novusbio.com/guarantee

Earn gift cards/discounts by submitting a review: www.novusbio.com/reviews/submit/NB300-189

Earn gift cards/discounts by submitting a publication using this product:
www.novusbio.com/publications

