

Product Datasheet

GluR1 [p Ser845] Antibody - Azide Free NB300-171

Unit Size: 0.15 ml

Store at -20C. Avoid freeze-thaw cycles.

www.novusbio.com



technical@novusbio.com

Publications: 1

Protocols, Publications, Related Products, Reviews, Research Tools and Images at:
www.novusbio.com/NB300-171

Updated 2/21/2025 v.20.1

Earn rewards for product
reviews and publications.

Submit a publication at www.novusbio.com/publications

Submit a review at www.novusbio.com/reviews/destination/NB300-171



NB300-171

GluR1 [p Ser845] Antibody - Azide Free

Product Information

Unit Size	0.15 ml
Concentration	Please see the vial label for concentration. If unlisted please contact technical services.
Storage	Store at -20C. Avoid freeze-thaw cycles.
Clonality	Polyclonal
Preservative	No Preservative
Isotype	IgG
Purity	Antigen Affinity-purified
Buffer	10mM HEPES (pH 7.5), 0.15M NaCl, 0.1 mg/ml BSA and 50% Glycerol
Target Molecular Weight	100 kDa

Product Description

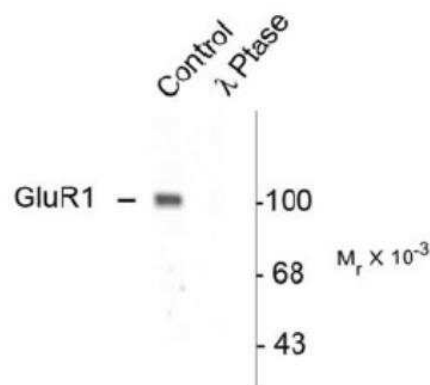
Host	Rabbit
Gene ID	2890
Gene Symbol	GRIA1
Species	Mouse, Rat
Reactivity Notes	Mouse reactivity reported in scientific literature (PMID: 24212670)
Specificity/Sensitivity	Specific for endogenous levels of the ~100 kDa GluR1 protein phosphorylated at Ser845. Immunolabeling is completely eliminated by treatment with lambda-phosphatase.
Immunogen	Synthetic phospho-peptide corresponding to amino acid residues surrounding Ser845 conjugated to KLH. Accession # P19490

Product Application Details

Applications	Western Blot, Immunohistochemistry, Immunohistochemistry-Frozen
Recommended Dilutions	Western Blot 1:1000, Immunohistochemistry 1:1000, Immunohistochemistry-Frozen 1:1000

Images

Western Blot: GluR1 [p Ser845] Antibody [NB300-171] - Rat hippocampal lysate showing specific immunolabeling of the ~100k GluR1 protein phosphorylated at Ser845 (Control). The phosphospecificity of this labeling is shown in the second lane (lambda-phosphatase: lambda-Ptase). The blot is identical to the control except that it was incubated in lambda-Ptase (1200 units for 30 min) before being exposed to the GluR1 Ser845 antibody. The immunolabeling is completely eliminated by treatment with lambda-Ptase.

**Publications**

Kim J, Kwon JT, Kim HS et al. Memory recall and modifications by activating neurons with elevated CREB. Nat Neurosci. 2013-11-10 [PMID: 24212670] (WB, Mouse)



Novus Biologicals USA

10730 E. Briarwood Avenue
Centennial, CO 80112
USA
Phone: 303.730.1950
Toll Free: 1.888.506.6887
Fax: 303.730.1966
nb-customerservice@bio-techne.com

Bio-Techne Canada

21 Canmotor Ave
Toronto, ON M8Z 4E6
Canada
Phone: 905.827.6400
Toll Free: 855.668.8722
Fax: 905.827.6402
canada.inquires@bio-techne.com

Bio-Techne Ltd

19 Barton Lane
Abingdon Science Park
Abingdon, OX14 3NB, United Kingdom
Phone: (44) (0) 1235 529449
Free Phone: 0800 37 34 15
Fax: (44) (0) 1235 533420
info.EMEA@bio-techne.com

General Contact Information

www.novusbio.com
Technical Support: nb-technical@bio-techne.com
Orders: nb-customerservice@bio-techne.com
General: novus@novusbio.com

Products Related to NB300-171

HAF008	Goat anti-Rabbit IgG Secondary Antibody [HRP]
NB7160	Goat anti-Rabbit IgG (H+L) Secondary Antibody [HRP]
NBP2-24891	Rabbit IgG Isotype Control
H00002890-Q01-10ug	Recombinant Human GluR1 GST (N-Term) Protein

Limitations

This product is for research use only and is not approved for use in humans or in clinical diagnosis. Primary Antibodies are guaranteed for 1 year from date of receipt.

For more information on our 100% guarantee, please visit www.novusbio.com/guarantee

Earn gift cards/discounts by submitting a review: www.novusbio.com/reviews/submit/NB300-171

Earn gift cards/discounts by submitting a publication using this product:
www.novusbio.com/publications

