

Product Datasheet

Somatostatin R2/SSTR2 Antibody NB300-157

Unit Size: 0.1 ml

Aliquot and store at -20C or -80C. Avoid freeze-thaw cycles.

www.novusbio.com



technical@novusbio.com

Publications: 10

Protocols, Publications, Related Products, Reviews, Research Tools and Images at:
www.novusbio.com/NB300-157

Updated 10/23/2024 v.20.1

**Earn rewards for product
reviews and publications.**

Submit a publication at www.novusbio.com/publications

Submit a review at www.novusbio.com/reviews/destination/NB300-157



NB300-157**Somatostatin R2/SSTR2 Antibody**

Product Information	
Unit Size	0.1 ml
Concentration	This product is unpurified. The exact concentration of antibody is not quantifiable.
Storage	Aliquot and store at -20C or -80C. Avoid freeze-thaw cycles.
Clonality	Polyclonal
Preservative	0.05% Sodium Azide
Isotype	IgG
Purity	Unpurified
Buffer	Whole antisera

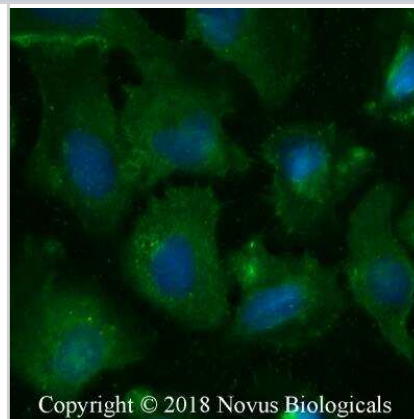
Product Description	
Host	Rabbit
Gene ID	6752
Gene Symbol	SSTR2
Species	Human, Mouse, Rat, Porcine
Reactivity Notes	Porcine reactivity reported in scientific literature (PMID:33002813)
Immunogen	A synthetic peptide made to the C-terminus of rat Somatostatin Receptor 2 [UniProt# P30680]
Notes	Licensed to Novus Biologicals LLC under U.S. Patent No 5,998,154.

Product Application Details	
Applications	Western Blot, Electron Microscopy, Flow Cytometry, Immunocytochemistry/ Immunofluorescence, Immunohistochemistry, Immunohistochemistry-Frozen, Immunohistochemistry-Paraffin, Immunoprecipitation
Recommended Dilutions	Western Blot 1:100 - 1:1000, Flow Cytometry, Immunohistochemistry 1:100, Immunocytochemistry/ Immunofluorescence 1:100 - 1:250, Immunoprecipitation 1:10 - 1:500, Immunohistochemistry-Paraffin 1:100, Immunohistochemistry-Frozen 1:100, Electron Microscopy

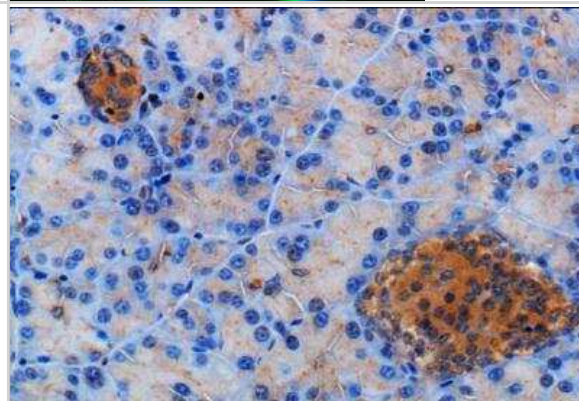


Images

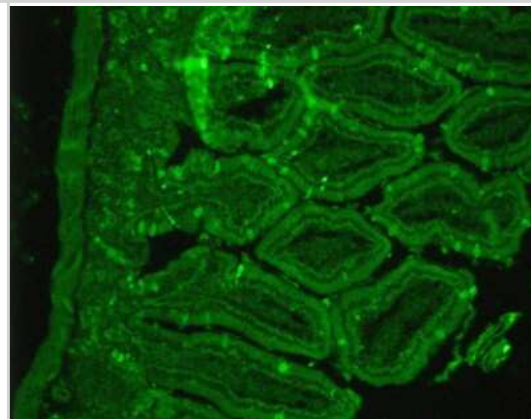
Immunocytochemistry/Immunofluorescence: Somatostatin R2/SSTR2 Antibody [NB300-157] - U2OS cells were fixed for 10 minutes using 10% formalin and then permeabilized for 5 minutes using 1X PBS + 0.05% Triton X-100. The cells were incubated with antibody at 1:50 overnight at 4C and detected with an anti-rabbit Dylight 488 (Green) at 1:500. Nuclei were counterstained with DAPI (Blue). Cells were imaged using a 40X objective.



Immunohistochemistry-Paraffin: Somatostatin R2/SSTR2 Antibody [NB300-157] - Staining of Somatostatin Receptor 2 in mouse pancreas using DAB with hematoxylin counterstain.



Immunohistochemistry-Paraffin: Somatostatin R2/SSTR2 Antibody [NB300-157] - Staining of paraffin embedded rat pancreas tissue.



Publications

- Mandriani B, Pellè E, Mannavola F et al. Development of anti-somatostatin receptors CAR T cells for treatment of neuroendocrine tumors *Journal for immunotherapy of cancer* 2022-06-01 [PMID: 35764366] (FLOW)
- Yamashita S, Morine Y, Imura S et al. A new pathological classification of intrahepatic cholangiocarcinoma according to protein expression of SSTR2 and Bcl2 *World journal of surgical oncology* 2021-05-07 [PMID: 33962620] (IF/IHC, Human)
- Dearling JLJ, van Dam EM, Harris MJ, Packard AB Detection and therapy of neuroblastoma minimal residual disease using [64/67Cu]Cu-SARTATE in a preclinical model of hepatic metastases *EJNMMI research* 2021-02-25 [PMID: 33630166] (IF/IHC, Human)
- Jana B, Calka J, Czajkowska M The role of somatostatin and its receptors (sstr2, sstr5) in the contractility of gilt inflamed uterus *Research in veterinary science* 2020-09-19 [PMID: 33002813] (WB, Porcine)
- Wang Z, Ma W, Wang J et al. Imaging and therapy of hSSTR2-transfected tumors using radiolabeled somatostatin analogs. *Tumour Biol* 2013-04-19 [PMID: 23605323] (FLOW)
- Reubi JC, Laissue JA, Waser B et al. Immunohistochemical detection of somatostatin sst2a receptors in the lymphatic, smooth muscular, and peripheral nervous systems of the human gastrointestinal tract: facts and artifacts. *J Clin Endocrinol Metab*;84(8):2942-50. 1999-08-01 [PMID: 10443702] (IHC-Fr, IHC-P, WB, Human)
- Reubi JC, Kappeler A, Waser B et al. Immunohistochemical localization of somatostatin receptors sst2A in human tumors. *Am J Pathol*;153(1):233-45. 1998-07-01 [PMID: 9665484] (WB, IHC-Fr, IHC-P, Human)
- Gu YZ, Schonbrunn A. Coupling specificity between somatostatin receptor sst2A and G proteins: isolation of the receptor-G protein complex with a receptor antibody. *Mol Endocrinol*;11(5):527-37. 1997-05-01 [PMID: 9139797] (WB, Rat)
- Li F, Ryu BY, Krueger RL et al. Targeted entry via somatostatin receptors using a novel modified retrovirus glycoprotein that delivers genes at levels comparable to wild type viral glycoproteins. *Journal of Virology*. 2011-10-19 [PMID: 22013043]
- Dournaud P, Gu YZ, Schonbrunn A et al. Localization of the somatostatin receptor SST2A in rat brain using a specific anti-peptide antibody. *J Neurosci*;16(14):4468-78. 1996-07-15 [PMID: 8699257] (WB, ICC/IF, Rat)



Procedures

Protocol specific for Somatostatin Receptor 2 Antibody (NB300-157)

Somatostatin R2/SSTR2 Antibody:

Procedure Guide for NB 300-157 Polyclonal Anti-Somatostatin Receptor II

Immunofluorescence Procedure

1. Plate cells on Lab-TekII chamber slides (Nalge Nunc).
2. Grow cells to about 75% confluence.
3. Rinse cells with PBS, at room temperature (RT).
4. Fix in 2% formaldehyde/PBS for 20 minutes at RT.
5. Rinse the cells 3x with TBS (pH 7.2).
6. Block the non-specific sites with 0.5% normal goat serum in TBS + 0.1% Triton X 100 (TBS-TX).
7. Incubate the cells in anti-SSR2 (catalog# NB 300-157), diluted in TBS-TX, overnight at RT.
8. Next day: rinse the cells 3x 5 minutes, in TBS.
9. Incubate the cells for 1 hour at RT in FITC-goat anti-rabbit secondary, diluted in TBS-TX (1:1,000).
10. Rinse 3x with TBS.
11. Mount the cells in Vector Labs mounting media and coverslip.





Novus Biologicals USA

10730 E. Briarwood Avenue
Centennial, CO 80112
USA
Phone: 303.730.1950
Toll Free: 1.888.506.6887
Fax: 303.730.1966
nb-customerservice@bio-techne.com

Bio-Techne Canada

21 Canmotor Ave
Toronto, ON M8Z 4E6
Canada
Phone: 905.827.6400
Toll Free: 855.668.8722
Fax: 905.827.6402
canada.inquires@bio-techne.com

Bio-Techne Ltd

19 Barton Lane
Abingdon Science Park
Abingdon, OX14 3NB, United Kingdom
Phone: (44) (0) 1235 529449
Free Phone: 0800 37 34 15
Fax: (44) (0) 1235 533420
info.EMEA@bio-techne.com

General Contact Information

www.novusbio.com
Technical Support: nb-technical@bio-techne.com
Orders: nb-customerservice@bio-techne.com
General: novus@novusbio.com

Products Related to NB300-157

NB300-157PEP	Somatostatin R2/SSTR2 Antibody Blocking Peptide
HAF008	Goat anti-Rabbit IgG Secondary Antibody [HRP]
NB7160	Goat anti-Rabbit IgG (H+L) Secondary Antibody [HRP]
NBP2-24891	Rabbit IgG Isotype Control

Limitations

This product is for research use only and is not approved for use in humans or in clinical diagnosis. Primary Antibodies are guaranteed for 1 year from date of receipt.

For more information on our 100% guarantee, please visit www.novusbio.com/guarantee

Earn gift cards/discounts by submitting a review: www.novusbio.com/reviews/submit/NB300-157

Earn gift cards/discounts by submitting a publication using this product:
www.novusbio.com/publications

