

# Product Datasheet

## Neurofibromin 1 Antibody NB300-155

Unit Size: 0.5 ml

Store at 4C short term. Aliquot and store at -20C long term. Avoid freeze-thaw cycles.

[www.novusbio.com](http://www.novusbio.com)



[technical@novusbio.com](mailto:technical@novusbio.com)

### Publications: 4

Protocols, Publications, Related Products, Reviews, Research Tools and Images at:  
[www.novusbio.com/NB300-155](http://www.novusbio.com/NB300-155)

Updated 10/23/2024 v.20.1

Earn rewards for product  
reviews and publications.

Submit a publication at [www.novusbio.com/publications](http://www.novusbio.com/publications)

Submit a review at [www.novusbio.com/reviews/destination/NB300-155](http://www.novusbio.com/reviews/destination/NB300-155)



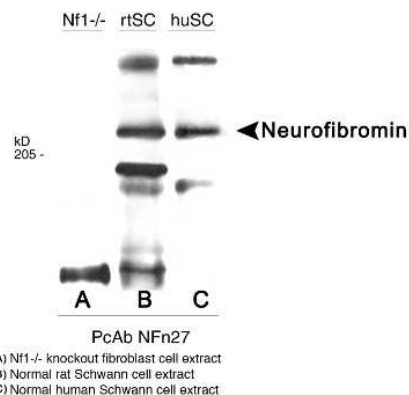
**NB300-155****Neurofibromin 1 Antibody**

<b>Product Information</b>	
<b>Unit Size</b>	0.5 ml
<b>Concentration</b>	This product is unpurified. The exact concentration of antibody is not quantifiable.
<b>Storage</b>	Store at 4C short term. Aliquot and store at -20C long term. Avoid freeze-thaw cycles.
<b>Clonality</b>	Polyclonal
<b>Preservative</b>	0.02% Sodium Azide
<b>Isotype</b>	IgG
<b>Purity</b>	Unpurified
<b>Buffer</b>	Whole antisera
<b>Product Description</b>	
<b>Host</b>	Rabbit
<b>Gene ID</b>	4763
<b>Gene Symbol</b>	NF1
<b>Species</b>	Human, Mouse, Rat
<b>Immunogen</b>	An N-terminal peptide of Neurofibromin 1 (within amino acids 1-50). [Uniprot: P21359]
<b>Product Application Details</b>	
<b>Applications</b>	Western Blot, Immunocytochemistry/ Immunofluorescence, Immunohistochemistry, Immunohistochemistry-Frozen, Immunohistochemistry-Paraffin
<b>Recommended Dilutions</b>	Western Blot 1:500-1:2000, Immunohistochemistry 1:200-1:500, Immunocytochemistry/ Immunofluorescence reported in scientific literature (PMID 23910086), Immunohistochemistry-Paraffin 1:200-1:500, Immunohistochemistry-Frozen 1:200-1:500
<b>Application Notes</b>	<p>In Western blot, a band-set at 220-240 kDa and a higher MW band at 450 kDa (uncharacterized) can be seen. The observed molecular weight of the protein may vary from the listed predicted molecular weight due to post translational modifications, post translation cleavages, relative charges, and other experimental factors.</p> <p>For IHC, antigen retrieval is not required for immunostaining of frozen sections. Antigen retrieval with trypsin or citrate improves immunostaining of paraffin sections.</p>

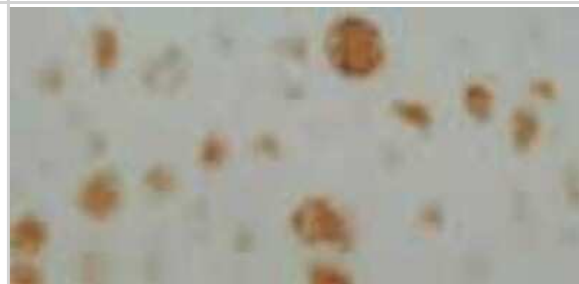


## Images

Western Blot: Neurofibromin 1 Antibody [NB300-155] - Western Blot of (A, B, C above).



Immunohistochemistry: Neurofibromin 1 Antibody [NB300-155] - NF1 protein labeling displays positive signal in the maturing and the hypertrophic cartilages but only faint labeling in the proliferative cartilage.



## Publications

Kuorilehto T, Nissinen M, Koivunen J et al. NF1 tumor suppressor protein and mRNA in skeletal tissues of developing and adult normal mouse and NF1-deficient embryos. J Bone Miner Res. 2004-06-01 [PMID: 15125795] (IHC-P, Mouse)

Yoshioka N, Gros E, Li HR et al. Efficient Generation of Human iPSCs by a Synthetic Self-Replicative RNA. Cell Stem Cell 2013-08-01 [PMID: 23910086] (IF/IHC, ICC/IF, Mouse)

Wallace MD, Pfefferle AD, Shen L et al. Comparative Oncogenomics Implicates the Neurofibromin 1 Gene (NF1) as a Breast Cancer Driver. Genetics 2012-10-01 [PMID: 22851646]

Kuorilehto, T et al. NF1 gene expression in mouse fracture healing and in experimental rat pseudarthrosis. J Histochem Cytochem;54(3):363-70. 2006-03-01 [PMID: 16314442] (IHC-P, Mouse, Rat)



### **Novus Biologicals USA**

10730 E. Briarwood Avenue  
Centennial, CO 80112  
USA  
Phone: 303.730.1950  
Toll Free: 1.888.506.6887  
Fax: 303.730.1966  
nb-customerservice@bio-techne.com

### **Bio-Techne Canada**

21 Canmotor Ave  
Toronto, ON M8Z 4E6  
Canada  
Phone: 905.827.6400  
Toll Free: 855.668.8722  
Fax: 905.827.6402  
canada.inquires@bio-techne.com

### **Bio-Techne Ltd**

19 Barton Lane  
Abingdon Science Park  
Abingdon, OX14 3NB, United Kingdom  
Phone: (44) (0) 1235 529449  
Free Phone: 0800 37 34 15  
Fax: (44) (0) 1235 533420  
info.EMEA@bio-techne.com

### **General Contact Information**

www.novusbio.com  
Technical Support: nb-technical@bio-techne.com  
Orders: nb-customerservice@bio-techne.com  
General: novus@novusbio.com

### **Products Related to NB300-155**

---

NB300-155PEP	Neurofibromin 1 Antibody Blocking Peptide
HAF008	Goat anti-Rabbit IgG Secondary Antibody [HRP]
NB7160	Goat anti-Rabbit IgG (H+L) Secondary Antibody [HRP]
NBP2-24891	Rabbit IgG Isotype Control

---

### **Limitations**

This product is for research use only and is not approved for use in humans or in clinical diagnosis. Primary Antibodies are guaranteed for 1 year from date of receipt.

For more information on our 100% guarantee, please visit [www.novusbio.com/guarantee](http://www.novusbio.com/guarantee)

Earn gift cards/discounts by submitting a review: [www.novusbio.com/reviews/submit/NB300-155](http://www.novusbio.com/reviews/submit/NB300-155)

Earn gift cards/discounts by submitting a publication using this product:  
[www.novusbio.com/publications](http://www.novusbio.com/publications)

