

Product Datasheet

GABA-AR alpha 6 Antibody - Azide and BSA Free NB300-150

Unit Size: 0.05 ml

Store at -20C. Avoid freeze-thaw cycles.

www.novusbio.com



technical@novusbio.com

Publications: 1

Protocols, Publications, Related Products, Reviews, Research Tools and Images at:
www.novusbio.com/NB300-150

Updated 10/23/2024 v.20.1

Earn rewards for product
reviews and publications.

Submit a publication at www.novusbio.com/publications

Submit a review at www.novusbio.com/reviews/destination/NB300-150



NB300-150

GABA-AR alpha 6 Antibody - Azide and BSA Free

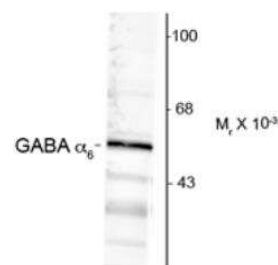
| Product Information | |
|-------------------------|--|
| Unit Size | 0.05 ml |
| Concentration | This product is unpurified. The exact concentration of antibody is not quantifiable. |
| Storage | Store at -20C. Avoid freeze-thaw cycles. |
| Clonality | Polyclonal |
| Preservative | No Preservative |
| Isotype | IgG |
| Purity | Unpurified |
| Buffer | Neat whole antisera |
| Target Molecular Weight | 57 kDa |

| Product Description | |
|-------------------------|--|
| Description | Recommended that the undiluted antibody be aliquoted into smaller working volumes (10-30 uL/vial depending on usage). |
| Host | Rabbit |
| Gene ID | 2559 |
| Gene Symbol | GABRA6 |
| Species | Mouse, Rat |
| Specificity/Sensitivity | Specific for endogenous levels of the ~57 kDa alpha 6-subunit of the GABAA receptor. |
| Immunogen | Synthetic peptide corresponding to amino acid residues specific to the alpha 6 subunit conjugated to KLH. Accession # P30191 |

| Product Application Details | |
|-----------------------------|---|
| Applications | Western Blot, Immunohistochemistry |
| Recommended Dilutions | Western Blot 1:1000, Immunohistochemistry 1:10-1:500 |
| Application Notes | In Western blot a band at approximately 57 kDa is seen. Use in Immunohistochemistry reported in scientific literature (PMID 18509076) |

Images

Western Blot: GABA-A R alpha 6 Antibody [NB300-150]

Anti-GABA_A Receptor, α₆-Subunit

Western blot of 10 μg of rat cortex lysate showing specific immunolabeling of the ~57k α₆-subunit of the GABA_A-R.

Publications

Krook-Magnuson EI, Li P, Paluszkiewicz SM et al. Tonicly Active Inhibition Selectively Controls Feedforward Circuits in Mouse Barrel Cortex. *J Neurophysiol*;100(2):932-944. 2008-01-01 [PMID: 18509076] (IF/IHC, Mouse)



Procedures

Western Blot protocol specific for GABA A Receptor alpha 6 Antibody (NB300-150)

Western Blot protocol specific for GABA A Receptor alpha 6 Antibody (NB300-150):

1. Pour lower gels according to recipes layer with about 300 ul ethanol and allow to polymerize at least 45 minutes. 7.5% SDS-PAGE gels work well for Synapsin, NR2A, 2B, and 2C antibodies.
2. Rinse off ethanol with water. Shake and/or use a kimwipe to remove excess water. Pour upper gels (stacks) and insert combs. Let polymerize about 15-20 minutes. Remove combs, making sure you pull them straight out, and rinse with water.
3. Attach gel holders to running electrode apparatus and fill chamber with 1X running buffer.
4. Load gels beginning with 10 ul of the kaleidoscope molecular weight marker.
5. Attach electrodes to power source and run gels at 200 Volts for about 45 minutes or until dye front runs down past gray gasket.
6. Turn off power source and remove gel holders from running apparatus first and then carefully remove plates from holders. Remove one plate and leave gel attached to the other plate. Use a spacer or the green scraper to cut off stacks and discard.
7. Place plate with attached gel in some 1X transfer buffer and let equilibrate while you assemble the transfer genie. Transfer buffer + 20% Methanol is standard for many antibodies. NMDA antibodies seem to look a little better in transfer buffer with 5% Methanol + .05% SDS.
8. Wearing gloves cut PVDF membranes to gel size and wet in Methanol to activate for about 30 seconds. Rinse 2-3 times in water. Be sure to keep membrane wet at all times. Put membrane in some 1X transfer buffer until you are ready to use it.
9. Assemble the genie transfer apparatus per instructions on wall. Fill with 1X transfer buffer.
10. Carefully place gels on filter paper and then place PVDF membranes on top of gels making sure there are no air bubbles. Use the sawed-off pipette to roll over sandwich. Complete the assembly of transfer apparatus making sure there is enough buffer to come to the top of the scotch-brite pads.
11. Clean off electrodes with a Q-tip and attach to battery charger. Plug charger in and set to 6 Volts for the mini-genie and 12 Volts for the large genie. Transfer gel for 1.5-2 hours.
12. Take down transfer apparatus and rinse blot a couple of times in water. Place blot on kimwipe and let air dry about 10-15 minutes to fix proteins. Reactivate membranes by rewetting in Methanol and rinsing in water.
13. Block blots in 5% Non-fat dry milk-TTBS for 30 minutes while shaking at room temperature. Blocking time may be increased to an hour if blots look dirty. It is not necessary to block when working with the Synapsin antibody. Milk works great for the NMDA antibodies, but when working with phospho-site or other antibodies that don't like milk, use 3% BSA-TTBS to block.
14. Incubate blots overnight in cold-room in primary antibody diluted in 1% milk TTBS or 1% BSA-TTBS.
15. Decant unbound primary antibody solution (save in fridge) and wash blot 3 x 10 minutes in TTBS.
16. Incubate blots in secondary antibody at a 1:10,000 1:30,000 dilution in 1% Milk or 1% BSA for 1 hour while shaking at room temperature. Use Goat Anti-Rabbit HRP for polyclonals and Goat Anti-Mouse HRP for monoclonals.
17. Decant secondary antibody solution and wash blots 3 x 15 minutes in TTBS or use TTBS + 0.1% Triton X-100 to reduce excessive background if needed.
18. ECL Detect---- Mix equal volumes of each reagent in the Pierce Super Signal ECL kit using just enough to cover blots (0.125 ml/cm of membrane). I use 1 ml of each for a total of 2 mls per standard size blot. Vortex ECL solution briefly and incubate blots in substrate for 1 minute only. Pour off excess ECL solution and blot with a kimwipe to further remove excess. Place blot on a piece of plastic sheet protector and put into the Alpha Chemi-Imager to visualize bands. Set exposures from roughly 15 seconds to 4 minutes.



Novus Biologicals USA

10730 E. Briarwood Avenue
Centennial, CO 80112
USA
Phone: 303.730.1950
Toll Free: 1.888.506.6887
Fax: 303.730.1966
nb-customerservice@bio-techne.com

Bio-Techne Canada

21 Canmotor Ave
Toronto, ON M8Z 4E6
Canada
Phone: 905.827.6400
Toll Free: 855.668.8722
Fax: 905.827.6402
canada.inquires@bio-techne.com

Bio-Techne Ltd

19 Barton Lane
Abingdon Science Park
Abingdon, OX14 3NB, United Kingdom
Phone: (44) (0) 1235 529449
Free Phone: 0800 37 34 15
Fax: (44) (0) 1235 533420
info.EMEA@bio-techne.com

General Contact Information

www.novusbio.com
Technical Support: nb-technical@bio-techne.com
Orders: nb-customerservice@bio-techne.com
General: novus@novusbio.com

Products Related to NB300-150

| | |
|-------------|--|
| NB820-59177 | Human Brain Whole Tissue Lysate (Adult Whole Normal) |
| HAF008 | Goat anti-Rabbit IgG Secondary Antibody [HRP] |
| NB7160 | Goat anti-Rabbit IgG (H+L) Secondary Antibody [HRP] |
| NBP2-24891 | Rabbit IgG Isotype Control |

Limitations

This product is for research use only and is not approved for use in humans or in clinical diagnosis. Primary Antibodies are guaranteed for 1 year from date of receipt.

For more information on our 100% guarantee, please visit www.novusbio.com/guarantee

Earn gift cards/discounts by submitting a review: www.novusbio.com/reviews/submit/NB300-150

Earn gift cards/discounts by submitting a publication using this product:
www.novusbio.com/publications

