

# Product Datasheet

## Laminin Antibody [Alexa Fluor® 488] NB300-144AF488

Unit Size: 0.1 ml

Store at 4C in the dark.

[www.novusbio.com](http://www.novusbio.com)



[technical@novusbio.com](mailto:technical@novusbio.com)

### Publications: 3

Protocols, Publications, Related Products, Reviews, Research Tools and Images at:  
[www.novusbio.com/NB300-144AF488](http://www.novusbio.com/NB300-144AF488)

Updated 10/23/2024 v.20.1

Earn rewards for product  
reviews and publications.

Submit a publication at [www.novusbio.com/publications](http://www.novusbio.com/publications)

Submit a review at [www.novusbio.com/reviews/destination/NB300-144AF488](http://www.novusbio.com/reviews/destination/NB300-144AF488)



**NB300-144AF488**

Laminin Antibody [Alexa Fluor® 488]

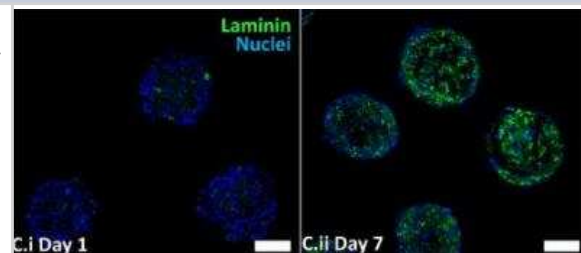
Product Information	
Unit Size	0.1 ml
Concentration	Please see the vial label for concentration. If unlisted please contact technical services.
Storage	Store at 4C in the dark.
Clonality	Polyclonal
Preservative	0.05% Sodium Azide
Isotype	IgG
Conjugate	Alexa Fluor 488
Purity	IgG purified
Buffer	50mM Sodium Borate
Product Description	
Host	Rabbit
Gene ID	284217
Gene Symbol	LAMA1
Species	Human, Mouse, Rat, Chinese Hamster, Invertebrate, Mammal, Rabbit, Sheep
Reactivity Notes	Rabbit, Fruit Bat, Chinese Hamster, and <i>S. mansoni</i> reactivity reported in scientific literature (PMID: 18214989, 31877588, 29251349, and 28114363 respectively). Human, Mouse, Rat, and Sheep reported in multiple pieces of scientific literature.
Marker	Basement Membrane Marker
Specificity/Sensitivity	Laminin Antibody is pan-specific and reacts well with all Laminin isoforms tested: Laminin-1 (alpha-1, beta-1, and gamma-1) and Laminin-2 (alpha-2, beta-1, and gamma-1).
Immunogen	Laminin Antibody was made to Laminin 111 isolated from mouse Engelbreth-Holm-Swarm (EHS) sarcoma cells. [UniProt# P19137]
Notes	Alexa Fluor (R) products are provided under an intellectual property license from Life Technologies Corporation. The purchase of this product conveys to the buyer the non-transferable right to use the purchased product and components of the product only in research conducted by the buyer (whether the buyer is an academic or for-profit entity). The sale of this product is expressly conditioned on the buyer not using the product or its components, or any materials made using the product or its components, in any activity to generate revenue, which may include, but is not limited to use of the product or its components: (i) in manufacturing; (ii) to provide a service, information, or data in return for payment; (iii) for therapeutic, diagnostic or prophylactic purposes; or (iv) for resale, regardless of whether they are resold for use in research. For information on purchasing a license to this product for purposes other than as described above, contact Life Technologies Corporation, 5791 Van Allen Way, Carlsbad, CA 92008 USA or <a href="mailto:outlicensing@lifetech.com">outlicensing@lifetech.com</a> . This conjugate is made on demand. Actual recovery may vary from the stated volume of this product. The volume will be greater than or equal to the unit size stated on the datasheet.
Product Application Details	



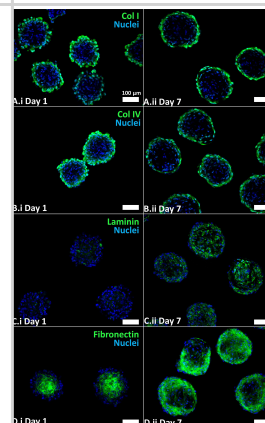
<b>Applications</b>	Western Blot, Flow Cytometry, Immunocytochemistry/ Immunofluorescence, Immunohistochemistry, Immunohistochemistry-Frozen, Immunohistochemistry-Paraffin, Immunohistochemistry Free-Floating
<b>Recommended Dilutions</b>	Western Blot, Flow Cytometry, Immunohistochemistry, Immunocytochemistry/ Immunofluorescence, Immunohistochemistry-Paraffin, Immunohistochemistry-Frozen, Immunohistochemistry Free-Floating
<b>Application Notes</b>	This Laminin antibody can be used for Immunocytochemistry/Immunofluorescence, Functional assays, Immunohistochemistry paraffin and frozen sections, and Western blotting where it detects bands at 200 and 400 kDa. Immunostaining is enhanced by antigen retrieval with pepsin, especially paraffin tissue.

## Images

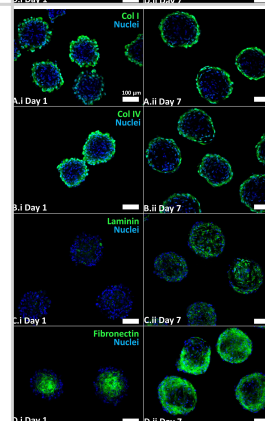
Immunofluorescence staining for extracellular matrix proteins in day 1 and day 7 HWJSC spheroids. HWJSC spheroids were cultured for either 1 day or 7 days (with 6 days of osteogenic differentiation), fixed, and stained for extracellular matrix protein: laminin (C) and counter-staining with Hoechst. Scale bars represent 100  $\mu$ m. Image collected and cropped by CiteAb from the following publication ([journals.plos.org/plosone/article?id=10.1371/journal.pone.0184155](https://journals.plos.org/plosone/article?id=10.1371/journal.pone.0184155)), licensed under a CC-BY license.



Immunofluorescence staining for extracellular matrix proteins in day 1 and day 7 HWJSC spheroids. HWJSC spheroids were cultured for either 1 day or 7 days (with 6 days of osteogenic differentiation), fixed, and stained for extracellular matrix proteins: collagen I (A) collagen IV (B), laminin (C), and fibronectin (D) and counter-staining with Hoechst. Scale bars represent 100  $\mu$ m.



Immunocytochemistry/ Immunofluorescence: Laminin Antibody [Alexa Fluor® 488] [NB300-144AF488] - Immunofluorescence staining for extracellular matrix proteins in day 1 & day 7 HWJSC spheroids. HWJSC spheroids were cultured for either 1 day or 7 days (with 6 days of osteogenic differentiation), fixed, & stained for extracellular matrix proteins: collagen I (A) collagen IV (B), laminin (C), & fibronectin (D) & counter-staining with Hoechst. Scale bars represent 100  $\mu$ m. Image collected & cropped by CiteAb from the following publication (<https://dx.plos.org/10.1371/journal.pone.0184155>), licensed under a CC0-1.0 license. Not internally tested by Novus Biologicals.



## Publications

Lee SH, Kang B, Kamenyeva O et al. Dermis resident macrophages orchestrate localized ILC2 eosinophil circuitries to promote non-healing cutaneous leishmaniasis Nature communications 2023-11-29 [PMID: 38030609]

Engineering human cell spheroids to model embryonic tissue fusion in vitro Belair D, Wolf C, Wood C et al. PLoS One. [PMID: 28898253] (ICC/IF, Human)

Qian Y, Rehmann MS, Qian NX et al. Hypoxia and Transforming Growth Factor-Beta1 Pathway Activation Promote Chinese Hamster Ovary Cell Aggregation. 2017 Dec 18 [PMID: 29251349] (Chinese Hamster). 2017-12-18 [PMID: 29251349] (Chinese Hamster)

### Details:

This citation used the Alexa Fluor 488 form of this antibody





### **Novus Biologicals USA**

10730 E. Briarwood Avenue  
Centennial, CO 80112  
USA  
Phone: 303.730.1950  
Toll Free: 1.888.506.6887  
Fax: 303.730.1966  
nb-customerservice@bio-techne.com

### **Bio-Techne Canada**

21 Canmotor Ave  
Toronto, ON M8Z 4E6  
Canada  
Phone: 905.827.6400  
Toll Free: 855.668.8722  
Fax: 905.827.6402  
canada.inquires@bio-techne.com

### **Bio-Techne Ltd**

19 Barton Lane  
Abingdon Science Park  
Abingdon, OX14 3NB, United Kingdom  
Phone: (44) (0) 1235 529449  
Free Phone: 0800 37 34 15  
Fax: (44) (0) 1235 533420  
info.EMEA@bio-techne.com

### **General Contact Information**

www.novusbio.com  
Technical Support: nb-technical@bio-techne.com  
Orders: nb-customerservice@bio-techne.com  
General: novus@novusbio.com

### **Products Related to NB300-144AF488**

---

NBP2-24982	Rabbit IgG Isotype Control [Alexa Fluor® 488]
NB300-144AF647	Laminin Antibody [Alexa Fluor® 647]
NBP2-42389PEP	Laminin Recombinant Protein Antigen
236-EG-200	EGF [Unconjugated]

---

### **Limitations**

This product is for research use only and is not approved for use in humans or in clinical diagnosis. Primary Antibodies are guaranteed for 1 year from date of receipt.

For more information on our 100% guarantee, please visit [www.novusbio.com/guarantee](http://www.novusbio.com/guarantee)

Earn gift cards/discounts by submitting a review: [www.novusbio.com/reviews/submit/NB300-144AF488](http://www.novusbio.com/reviews/submit/NB300-144AF488)

Earn gift cards/discounts by submitting a publication using this product:  
[www.novusbio.com/publications](http://www.novusbio.com/publications)

