

# Product Datasheet

## Complement Component C1qA Antibody (7H8) NB200-539

Unit Size: 0.05 mg

Store at 4C.

[www.novusbio.com](http://www.novusbio.com)



[technical@novusbio.com](mailto:technical@novusbio.com)

### Publications: 7

Protocols, Publications, Related Products, Reviews, Research Tools and Images at:  
[www.novusbio.com/NB200-539](http://www.novusbio.com/NB200-539)

Updated 9/9/2025 v.20.1

Earn rewards for product  
reviews and publications.

Submit a publication at [www.novusbio.com/publications](http://www.novusbio.com/publications)

Submit a review at [www.novusbio.com/reviews/destination/NB200-539](http://www.novusbio.com/reviews/destination/NB200-539)



**NB200-539**

## Complement Component C1qA Antibody (7H8)

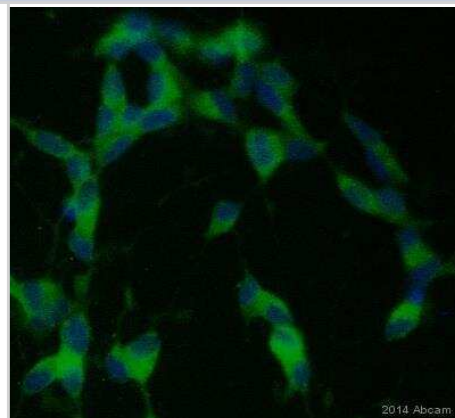
Product Information	
Unit Size	0.05 mg
Concentration	0.1 mg/ml
Storage	Store at 4C.
Clonality	Monoclonal
Clone	7H8
Preservative	0.02% Sodium Azide
Isotype	IgG1
Purity	Protein G purified
Buffer	0.2 um filtered solution in PBS and 0.1% BSA

Product Description	
Description	Novus Biologicals Rat Complement Component C1qA Antibody (7H8) (NB200-539) is a monoclonal antibody validated for use in IHC and ICC/IF. Anti-Complement Component C1qA Antibody: Cited in 7 publications. All Novus Biologicals antibodies are covered by our 100% guarantee.
Host	Rat
Gene ID	712
Gene Symbol	C1QA
Species	Mouse
Immunogen	Unfortunately, this information is considered to be commercially sensitive

Product Application Details	
Applications	Immunoassay, Immunocytochemistry/ Immunofluorescence, Immunohistochemistry, Immunohistochemistry-Frozen
Recommended Dilutions	Immunohistochemistry 1:10-1:500, Immunocytochemistry/ Immunofluorescence 1:10-1:500, Immunohistochemistry-Frozen 1:10, Immunoassay
Application Notes	IHC-Fr: 4% PFA fixed and sucrose infiltrated frozen tissue. 18h 4C, 0.133 ug/ml 7H8. IA: Antibody 7H8 can be used as capture and detection antibody. To detect bound C11, 1/100 diluted 7H8 was used. Dilutions to be used depend on detection system applied. It is recommended that users test the reagent and determine their own optimal dilutions. The typical starting working dilution is 1:50.

**Images**

Immunocytochemistry/Immunofluorescence: Complement Component C1qA Antibody (7H8) [NB200-539] - staining C1q (green) in human SHSY5Y cells by ICC/IF (Immunocytochemistry/immunofluorescence).



**Publications**

Ibrahim T, Wu P, Wang LJ et al. Sex-dependent differences in the genomic profile of lingual sensory neurons in naïve and tongue-tumor bearing mice Scientific Reports 2023-08-12 [PMID: 37573456]

Ibrahim T, Wu P, Wang LJ et al. Sex-dependent Differences in the Genomic Profile of Lingual Sensory Neurons in Naïve and Tongue-Tumor Bearing Mice bioRxiv : the preprint server for biology 2023-05-14 [PMID: 36711730] (IHC-Fr, Mouse)

Ankeny, D et al. B cells produce pathogenic antibodies and impair recovery after spinal cord injury in mice. J Clin Invest , 119: 2990. 2009-01-01 [PMID: 19770513]

Abbitt, K et al. Antibody ligation of murine Ly-6G induces neutropenia, blood flow cessation, and death via complement-dependent and independent mechanisms. J Leukoc Biol , 85: 55. 2009-01-01 [PMID: 18927400]

Kang, Y et al. A Dominant Complement Fixation Pathway for Pneumococcal Polysaccharides Initiated by SIGN-R1 Interacting with C1q. Cell , 125: 47. 2006-01-01 [PMID: 16615889]

Suresh\_m et al. Role of the property of C-Reactive Protein to activate the classical pathway of complement in protecting mice from pneumococcal infection. J Immunol , 176: 4369. 2006-01-01 [PMID: 16547275]

Zachrau, B et al. Antigen localization within the splenic marginal zone restores humoral immune response and IgG class switch in complement C4-deficient mice. Int Immunol , 16: 1685. 2004-01-01 [PMID: 15477230]





### **Novus Biologicals USA**

10730 E. Briarwood Avenue  
Centennial, CO 80112  
USA  
Phone: 303.730.1950  
Toll Free: 1.888.506.6887  
Fax: 303.730.1966  
nb-customerservice@bio-techne.com

### **Bio-Techne Canada**

21 Canmotor Ave  
Toronto, ON M8Z 4E6  
Canada  
Phone: 905.827.6400  
Toll Free: 855.668.8722  
Fax: 905.827.6402  
canada.inquires@bio-techne.com

### **Bio-Techne Ltd**

19 Barton Lane  
Abingdon Science Park  
Abingdon, OX14 3NB, United Kingdom  
Phone: (44) (0) 1235 529449  
Free Phone: 0800 37 34 15  
Fax: (44) (0) 1235 533420  
info.EMEA@bio-techne.com

### **General Contact Information**

www.novusbio.com  
Technical Support: nb-technical@bio-techne.com  
Orders: nb-customerservice@bio-techne.com  
General: novus@novusbio.com

### **Products Related to NB200-539**

---

HAF005	Goat anti-Rat IgG Secondary Antibody [HRP]
NB7115	Goat anti-Rat IgG (H+L) Secondary Antibody [HRP]
DDXCR01	Rat IgG1 Isotype Control
210-TA-005	TNF-alpha [Unconjugated]

---

### **Limitations**

This product is for research use only and is not approved for use in humans or in clinical diagnosis. Primary Antibodies are guaranteed for 1 year from date of receipt.

For more information on our 100% guarantee, please visit [www.novusbio.com/guarantee](http://www.novusbio.com/guarantee)

Earn gift cards/discounts by submitting a review: [www.novusbio.com/reviews/submit/NB200-539](http://www.novusbio.com/reviews/submit/NB200-539)

Earn gift cards/discounts by submitting a publication using this product:  
[www.novusbio.com/publications](http://www.novusbio.com/publications)

