

# Product Datasheet

## ER alpha/NR3A1 Antibody - BSA Free NB200-347

Unit Size: 100 ul

Store at 4C. Do not freeze.

[www.novusbio.com](http://www.novusbio.com)



[technical@novusbio.com](mailto:technical@novusbio.com)

### Publications: 5

Protocols, Publications, Related Products, Reviews, Research Tools and Images at:  
[www.novusbio.com/NB200-347](http://www.novusbio.com/NB200-347)

Updated 2/21/2025 v.20.1

Earn rewards for product  
reviews and publications.

Submit a publication at [www.novusbio.com/publications](http://www.novusbio.com/publications)

Submit a review at [www.novusbio.com/reviews/destination/NB200-347](http://www.novusbio.com/reviews/destination/NB200-347)



**NB200-347**

ER alpha/NR3A1 Antibody - BSA Free

Product Information	
Unit Size	100 ul
Concentration	1.0 mg/ml
Storage	Store at 4C. Do not freeze.
Clonality	Polyclonal
Preservative	0.09% Sodium Azide
Isotype	IgG
Purity	Immunogen affinity purified
Buffer	Tris-Citrate/Phosphate (pH 7.0 - 8.0)
Target Molecular Weight	66 kDa

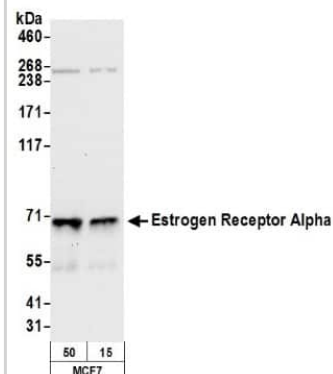
Product Description	
Description	This antibody can be used as the primary antibody in a PLA assay with the following as complementing antibodies:NB500-158, NB100-1567, NB100-58824, NB100-97831, NB200-171, NB100-2254, NB100-58826, NB600-233, NB100-314, NB100-77315, NB100-77315
Host	Rabbit
Gene ID	2099
Gene Symbol	ESR1
Species	Human
Immunogen	The immunogen recognized by this antibody maps to a region between residue 550 and the C-terminus (residue 595) of human Estrogen Receptor Alpha using the numbering given in SwissProt entry P03372 (GeneID 2099).
Notes	This antibody can be used as the primary antibody in a PLA assay with the following as complementing antibodies:NB500-158, NB100-1567, NB100-58824, NB100-97831, NB200-171, NB100-2254, NB100-58826, NB600-233, NB100-314, NB100-77315, NB100-77315

Product Application Details	
Applications	Western Blot, Immunoprecipitation
Recommended Dilutions	Western Blot 1:5000-1:15000, Immunoprecipitation 2-10 ug/mg lysate

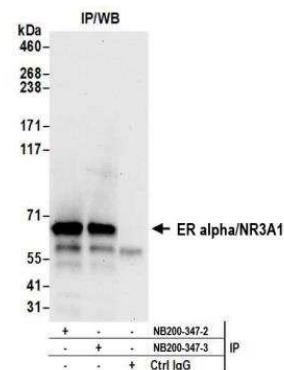


## Images

**Western Blot: ER alpha/NR3A1 Antibody [NB200-347] - Detection of Human Estrogen Receptor Alpha by Western Blot.** Samples: Whole cell lysate (50 ug) from MCF7 cells prepared using NETN lysis buffer. Antibody: Affinity purified rabbit anti-Estrogen Receptor Alpha antibody NB200-347 used for WB at 0.1 ug/ml. Detection: Chemiluminescence with an exposure time of 30 seconds.



**Immunoprecipitation: ER alpha/NR3A1 Antibody [NB200-347] - Detection of human ER alpha/NR3A1 by western blot of immunoprecipitates.** Samples: Whole cell lysate (0.5 or 1.0 mg per IP reaction; 20% of IP loaded) from MCF-7 cells prepared using NETN lysis buffer. Antibodies: Affinity purified rabbit anti-ER alpha/NR3A1 antibody NB200-347 (lot 3) used for IP at 6 ug per reaction. ER alpha/NR3A1 was also immunoprecipitated by previous lot of this antibody (lot 2). For blotting immunoprecipitated ER alpha/NR3A1, NB200-347 was used at 1 ug/ml. Detection: Chemiluminescence with an exposure time of 30 seconds.



## Publications

Ha NH, Nair VS, Reddy DN et al. Lactoferrin-endothelin-1 axis contributes to the development and invasiveness of triple-negative breast cancer phenotypes. *Cancer Res* 2011-12-01 [PMID: 22006997]

Di Leva G, Gasparini P, Piovan C et al. MicroRNA cluster 221-222 and estrogen receptor alpha interactions in breast cancer. *J Natl Cancer Inst* 2010-05-01 [PMID: 20388878]

Ohshiro K, Mudvari P, Meng QC et al. Identification of a novel estrogen receptor-alpha variant and its upstream splicing regulator. *Mol Endocrinol* 2010-05-01 [PMID: 20304996]

Popov VM, Zhou J, Shirley LA et al. The cell fate determination factor DACH1 is expressed in estrogen receptor-alpha-positive breast cancer and represses estrogen receptor-alpha signaling. *Cancer Res* 2009-07-01 [PMID: 19605405]

Zheng X, Chu F, Chou PM et al. Cathepsin L inhibition suppresses drug resistance in vitro and in vivo: a putative mechanism. *Am J Physiol Cell Physiol* 2009-01-01 [PMID: 18971393]



### **Novus Biologicals USA**

10730 E. Briarwood Avenue  
Centennial, CO 80112  
USA  
Phone: 303.730.1950  
Toll Free: 1.888.506.6887  
Fax: 303.730.1966  
nb-customerservice@bio-techne.com

### **Bio-Techne Canada**

21 Canmotor Ave  
Toronto, ON M8Z 4E6  
Canada  
Phone: 905.827.6400  
Toll Free: 855.668.8722  
Fax: 905.827.6402  
canada.inquires@bio-techne.com

### **Bio-Techne Ltd**

19 Barton Lane  
Abingdon Science Park  
Abingdon, OX14 3NB, United Kingdom  
Phone: (44) (0) 1235 529449  
Free Phone: 0800 37 34 15  
Fax: (44) (0) 1235 533420  
info.EMEA@bio-techne.com

### **General Contact Information**

www.novusbio.com  
Technical Support: nb-technical@bio-techne.com  
Orders: nb-customerservice@bio-techne.com  
General: novus@novusbio.com

### **Products Related to NB200-347**

---

NBL1-10344	ER alpha/NR3A1 Overexpression Lysate
HAF008	Goat anti-Rabbit IgG Secondary Antibody [HRP]
NB7160	Goat anti-Rabbit IgG (H+L) Secondary Antibody [HRP]
NBP2-24891	Rabbit IgG Isotype Control

---

### **Limitations**

This product is for research use only and is not approved for use in humans or in clinical diagnosis. Primary Antibodies are guaranteed for 1 year from date of receipt.

For more information on our 100% guarantee, please visit [www.novusbio.com/guarantee](http://www.novusbio.com/guarantee)

Earn gift cards/discounts by submitting a review: [www.novusbio.com/reviews/submit/NB200-347](http://www.novusbio.com/reviews/submit/NB200-347)

Earn gift cards/discounts by submitting a publication using this product:  
[www.novusbio.com/publications](http://www.novusbio.com/publications)

