

Product Datasheet

Carm1 Antibody - BSA Free

NB200-342

Unit Size: 100 ul

Store at 4C. Do not freeze.

www.novusbio.com



technical@novusbio.com

Publications: 8

Protocols, Publications, Related Products, Reviews, Research Tools and Images at:
www.novusbio.com/NB200-342

Updated 2/21/2025 v.20.1

Earn rewards for product
reviews and publications.

Submit a publication at www.novusbio.com/publications

Submit a review at www.novusbio.com/reviews/destination/NB200-342



NB200-342

Carm1 Antibody - BSA Free

Product Information

Unit Size	100 ul
Concentration	1.0 mg/ml
Storage	Store at 4C. Do not freeze.
Clonality	Polyclonal
Preservative	0.09% Sodium Azide
Isotype	IgG
Purity	Immunogen affinity purified
Buffer	Tris-Citrate/Phosphate (pH 7.0 - 8.0)

Product Description

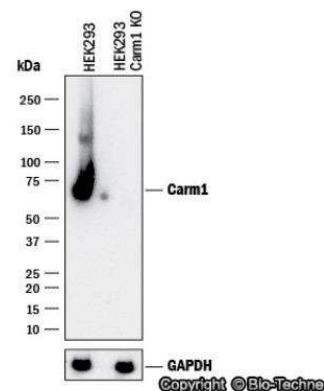
Host	Rabbit
Gene ID	10498
Gene Symbol	CARM1
Species	Human, Mouse
Immunogen	A synthetic peptide that maps to a region between residues 550 and the C-terminus (residue 585) of human Coactivator-Associated Arginine Methyltransferase 1 using the numbering given in Swiss-Prot entry Q86X55 (GeneID 10498).

Product Application Details

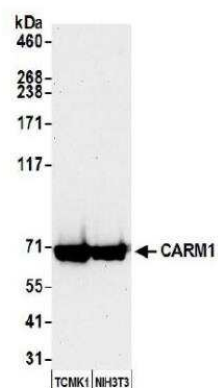
Applications	Western Blot, Immunohistochemistry, Immunohistochemistry-Paraffin, Immunoprecipitation, Knockdown Validated
Recommended Dilutions	Western Blot 1:10000 - 1:25000, Immunohistochemistry 1:500 - 1:2000, Immunoprecipitation 2 - 10 ug/mg lysate, Immunohistochemistry-Paraffin 1:500 - 1:2000, Knockdown Validated 1:5000
Application Notes	Optimal working dilutions should be determined experimentally by the investigator. In some cases, the antibody may be diluted further than indicated. Epitope retrieval with citrate buffer pH6.0 is recommended for FFPE tissue sections.

Images

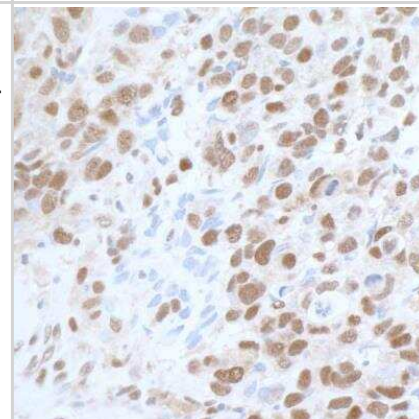
Western Blot: Carm1 Antibody [NB200-342] - Western blot shows lysates of HEK293T human embryonic kidney parental cell line and Carm1 knockout (KO) HEK293T cell line. PVDF membrane was probed with 1:5000 ug/ml of Rabbit Anti-Human Carm1 Polyclonal Antibody (Catalog # NB200-342) followed by HRP-conjugated Anti-Rabbit IgG Secondary Antibody (Catalog #HAF008). Specific band was detected for Carm1 at approximately 65 kDa (as indicated) in the parental HEK293T cell line, but is not detectable in the knockout HEK293T cell line. This experiment was conducted under reducing conditions.



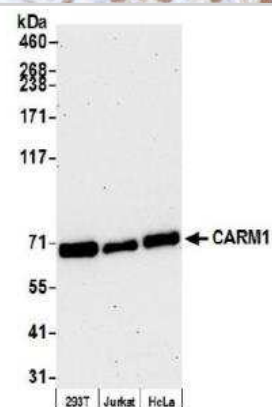
Western Blot: Carm1 Antibody [NB200-342] - Whole cell lysate (50 ug) from TCMK-1 and NIH 3T3 cells prepared using NETN lysis buffer. Antibody: Affinity purified rabbit anti-CARM1 antibody used for WB at 0.04 ug/ml. Detection: Chemiluminescence with an exposure time of 30 seconds.



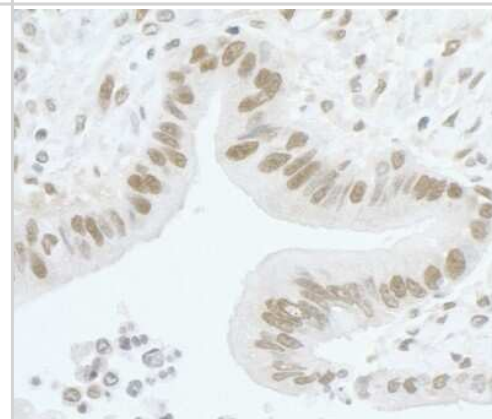
Immunohistochemistry-Paraffin: Carm1 Antibody [NB200-342] - Detection of human CARM1 by immunohistochemistry. Sample: FFPE section of human breast carcinoma. Antibody: Affinity purified rabbit anti-CARM1 (Cat. No. A300-421A lot 4) used at 1:1,000 (1ug/ml). Detection: DAB



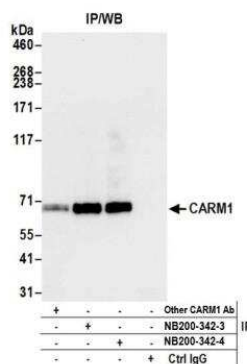
Western Blot: Carm1 Antibody [NB200-342] - Whole cell lysate (10 ug) from HEK293T, Jurkat, and HeLa cells prepared using NETN lysis buffer. Antibody: Affinity purified rabbit anti-CARM1 antibody used for WB at 0.04 ug/ml. Detection: Chemiluminescence with an exposure time of 75 seconds.



Immunohistochemistry-Paraffin: Carm1 Antibody [NB200-342] - Section of human stomach carcinoma. Antibody: Affinity purified rabbit anti-used at a dilution of 1:1,000 (1ug/ml). Detection: DAB



Immunoprecipitation: CARM1 Antibody [NB200-342] - Detection of human CARM1 by western blot of immunoprecipitates. Samples: Whole cell lysate (1.0 mg per IP reaction; 20% of IP loaded) from HEK293T cells prepared using NETN lysis buffer. Antibodies: Affinity purified rabbit anti-CARM1 antibody NB200-342 (lot NB200-342-4) used for IP at 6 ug per reaction. CARM1 was also immunoprecipitated by a previous lot of this antibody (lot NB200-342-3) and another rabbit anti-CARM1 antibody. For blotting immunoprecipitated CARM1, NB200-342 was used at 0.04 ug/ml. Detection: Chemiluminescence with an exposure time of 3 seconds.



Publications

Feng D, Gao J, Liu R et al. CARM1 drives triple-negative breast cancer progression by coordinating with HIF1A Protein & Cell 2024-10-01 [PMID: 38476024]

Li S, Cheng D et al. The Overexpression of CARM1 Promotes Human Osteosarcoma Cell Proliferation through the pGSK3 beta/beta-Catenin/cyclinD1 Signaling Pathway. Int J Biol Sci 2017-09-20 [PMID: 28924379] (WB, Human)

Li S, Cheng D, Zhu B, Yang Q. The Overexpression of CARM1 Promotes Human Osteosarcoma Cell Proliferation through the pGSK3B/B-Catenin/cyclinD1 Signaling Pathway Int J Mol Sci. 2017-07-18 [PMID: 27455247] (Human)

Ljubacic V, Khogali S, Renaud JM et al. Chronic AMPK stimulation attenuates adaptive signaling in dystrophic skeletal muscle. Am J Physiol Cell Physiol 2012-01-01 [PMID: 21940670]

Hubers L, Valderrama-Carvajal H, Laframboise J et al. HuD interacts with survival motor neuron protein and can rescue spinal muscular atrophy-like neuronal defects. Hum Mol Genet 2011-02-01 [PMID: 21088113]

Carascossa S, Dudek P, Cenni B et al. CARM1 mediates the ligand-independent and tamoxifen-resistant activation of the estrogen receptor alpha by cAMP. Genes Dev 2010-04-01 [PMID: 20360387]

Harrison MJ, Tang YH, Dowhan DH et al. Protein arginine methyltransferase 6 regulates multiple aspects of gene expression. Nucleic Acids Res 2010-04-01 [PMID: 20047962]

Dacwag CS, Bedford MT, Sif S et al. Distinct protein arginine methyltransferases promote ATP-dependent chromatin remodeling function at different stages of skeletal muscle differentiation. Mol Cell Biol 2009-04-01 [PMID: 19188441]



Novus Biologicals USA

10730 E. Briarwood Avenue
Centennial, CO 80112
USA
Phone: 303.730.1950
Toll Free: 1.888.506.6887
Fax: 303.730.1966
nb-customerservice@bio-techne.com

Bio-Techne Canada

21 Canmotor Ave
Toronto, ON M8Z 4E6
Canada
Phone: 905.827.6400
Toll Free: 855.668.8722
Fax: 905.827.6402
canada.inquires@bio-techne.com

Bio-Techne Ltd

19 Barton Lane
Abingdon Science Park
Abingdon, OX14 3NB, United Kingdom
Phone: (44) (0) 1235 529449
Free Phone: 0800 37 34 15
Fax: (44) (0) 1235 533420
info.EMEA@bio-techne.com

General Contact Information

www.novusbio.com
Technical Support: nb-technical@bio-techne.com
Orders: nb-customerservice@bio-techne.com
General: novus@novusbio.com

Products Related to NB200-342

NB800-PC1	HeLa Whole Cell Lysate
HAF008	Goat anti-Rabbit IgG Secondary Antibody [HRP]
NB7160	Goat anti-Rabbit IgG (H+L) Secondary Antibody [HRP]
NBP2-24891	Rabbit IgG Isotype Control

Limitations

This product is for research use only and is not approved for use in humans or in clinical diagnosis. Primary Antibodies are guaranteed for 1 year from date of receipt.

For more information on our 100% guarantee, please visit www.novusbio.com/guarantee

Earn gift cards/discounts by submitting a review: www.novusbio.com/reviews/submit/NB200-342

Earn gift cards/discounts by submitting a publication using this product:
www.novusbio.com/publications

