

Product Datasheet

Carm1 Antibody - BSA Free

NB200-341

Unit Size: 100 ul

Store at 4C. Do not freeze.

www.novusbio.com



technical@novusbio.com

Protocols, Publications, Related Products, Reviews, Research Tools and Images at:
www.novusbio.com/NB200-341

Updated 2/24/2025 v.20.1

Earn rewards for product
reviews and publications.

Submit a publication at www.novusbio.com/publications

Submit a review at www.novusbio.com/reviews/destination/NB200-341



NB200-341

Carm1 Antibody - BSA Free

Product Information	
Unit Size	100 ul
Concentration	1.0 mg/ml
Storage	Store at 4C. Do not freeze.
Clonality	Polyclonal
Preservative	0.09% Sodium Azide
Isotype	IgG
Purity	Immunogen affinity purified
Buffer	Tris-Citrate/Phosphate (pH 7.0 - 8.0)

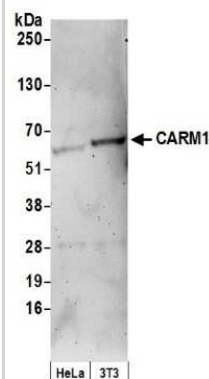
Product Description	
Host	Rabbit
Gene ID	10498
Gene Symbol	CARM1
Species	Human, Mouse
Immunogen	A synthetic peptide that maps to a region between residues 450 and 500 of human Coactivator-Associated Arginine Methyltransferase 1 using the numbering given in Swiss-Prot entry Q86X55 (GeneID 10498).

Product Application Details	
Applications	Western Blot, Immunohistochemistry, Immunohistochemistry-Paraffin, Immunoprecipitation
Recommended Dilutions	Western Blot 1:5000-1:15000, Immunohistochemistry 1:500 - 1:2000, Immunoprecipitation 1-4 ug/mg lysate, Immunohistochemistry-Paraffin 1:500 - 1:2000
Application Notes	Epitope retrieval with citrate buffer pH 6.0 is recommended for FFPE tissue sections.

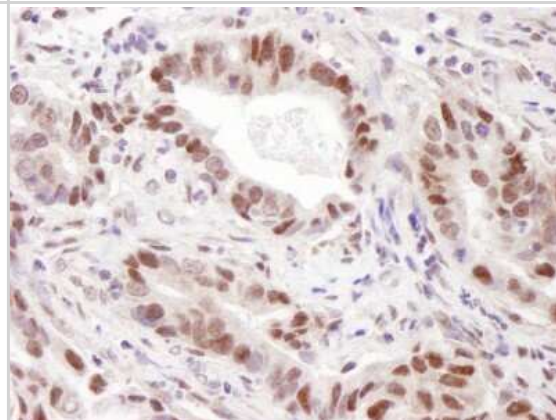


Images

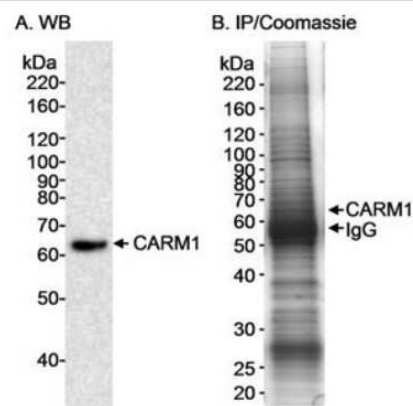
Western Blot: Carm1 Antibody [NB200-341] - Detection of Human and Mouse CARM1 by Western Blot. Samples: Whole cell lysate (50 ug) from HeLa and mouse NIH3T3 cells prepared using NETN lysis buffer. Antibody: Affinity purified rabbit anti-CARM1 antibody NB200-341 used for WB at 0.06 ug/ml. Detection: Chemiluminescence with an exposure time of 3 minutes.



Immunohistochemistry-Paraffin: Carm1 Antibody [NB200-341] - Human stomach carcinoma. Antibody used at a dilution of 1:1000 (1ug/ml).



Western Blot: Carm1 Antibody [NB200-341] - Whole HeLa cell lysate (25 mcg for WB in A; 5 mg for IP in B).antibody used at 0.1 mcg/ml for WB and at 4 mcg/5 mg lysate for IP. Detection: Chemiluminescence A. Coomassie stain in B. Band was verified by mass spectrometry.





Novus Biologicals USA

10730 E. Briarwood Avenue
Centennial, CO 80112
USA
Phone: 303.730.1950
Toll Free: 1.888.506.6887
Fax: 303.730.1966
nb-customerservice@bio-techne.com

Bio-Techne Canada

21 Canmotor Ave
Toronto, ON M8Z 4E6
Canada
Phone: 905.827.6400
Toll Free: 855.668.8722
Fax: 905.827.6402
canada.inquires@bio-techne.com

Bio-Techne Ltd

19 Barton Lane
Abingdon Science Park
Abingdon, OX14 3NB, United Kingdom
Phone: (44) (0) 1235 529449
Free Phone: 0800 37 34 15
Fax: (44) (0) 1235 533420
info.EMEA@bio-techne.com

General Contact Information

www.novusbio.com
Technical Support: nb-technical@bio-
techne.com
Orders: nb-customerservice@bio-techne.com
General: novus@novusbio.com

Limitations

This product is for research use only and is not approved for use in humans or in clinical diagnosis. Primary Antibodies are guaranteed for 1 year from date of receipt.

For more information on our 100% guarantee, please visit www.novusbio.com/guarantee

Earn gift cards/discounts by submitting a review: www.novusbio.com/reviews/submit/NB200-341

Earn gift cards/discounts by submitting a publication using this product:
www.novusbio.com/publications

