

Product Datasheet

Goat anti-Mouse IgM Heavy Chain Secondary Antibody NB120-9167

Unit Size: 1 mg

Store at 4C short term. Aliquot and store at -20C long term. Avoid freeze-thaw cycles.

www.novusbio.com



technical@novusbio.com

Publications: 2

Protocols, Publications, Related Products, Reviews, Research Tools and Images at:
www.novusbio.com/NB120-9167

Updated 10/23/2024 v.20.1

Earn rewards for product
reviews and publications.

Submit a publication at www.novusbio.com/publications

Submit a review at www.novusbio.com/reviews/destination/NB120-9167



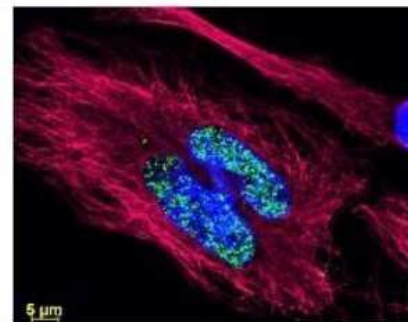
NB120-9167**Goat anti-Mouse IgM Heavy Chain Secondary Antibody**

Product Information	
Unit Size	1 mg
Concentration	Please see the vial label for concentration. If unlisted please contact technical services.
Storage	Store at 4C short term. Aliquot and store at -20C long term. Avoid freeze-thaw cycles.
Clonality	Polyclonal
Preservative	0.01% Sodium Azide
Isotype	IgG
Purity	Multi-step
Buffer	0.02 M Potassium Phosphate, 0.15 M Sodium Chloride, pH 7.2
Product Description	
Description	<p>This product was prepared from monospecific antiserum by immunoaffinity chromatography using Mouse IgM coupled to agarose followed by solid phase adsorption(s). Assay by immunoelectrophoresis resulted in a single precipitin arc against anti-Goat Serum, Mouse IgM and Mouse Serum</p> <p>Store vial at 4C prior to opening. This product is stable for several weeks at 4C as an undiluted liquid. Dilute only prior to immediate use. For extended storage aliquot contents and freeze at -20C or below. Avoid cycles of freezing and thawing.</p>
Host	Goat
Gene ID	3507
Gene Symbol	IGHM
Species	Mouse
Specificity/Sensitivity	No reaction was observed against other mouse heavy or light chain proteins.
Immunogen	Mouse IgM whole molecule
Product Application Details	
Applications	Western Blot, Dot Blot, ELISA, Fluorophore-linked immunosorbent assay, Immunocytochemistry/ Immunofluorescence, Immunohistochemistry
Recommended Dilutions	Western Blot 1:500 - 1:2000, ELISA 1:20000 - 1:50000, Immunohistochemistry 1:1000 - 1:5000, Immunocytochemistry/ Immunofluorescence, Dot Blot, Fluorophore-linked immunosorbent assay
Application Notes	This product has been tested by ELISA, dot blot, and western blot and is suitable for immunoblotting (western or dot blot), ELISA, and immunohistochemistry assays requiring lot-to-lot consistency.

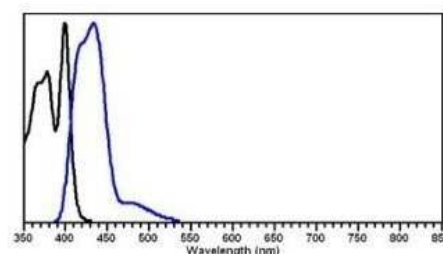


Images

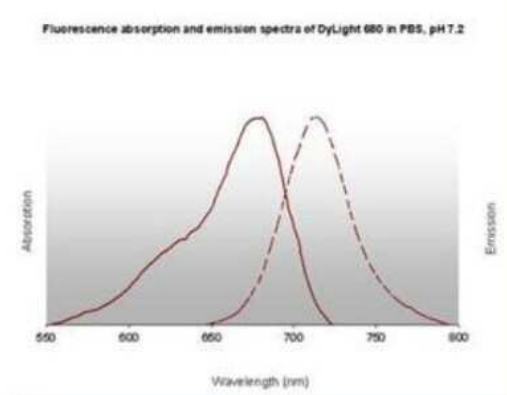
Immunocytochemistry/Immunofluorescence: Goat anti-Mouse IgM Heavy Chain Secondary Antibody [NB120-9167] - Immunocytochemistry/Immunofluorescence: Goat anti-Mouse IgM Secondary Antibody [DyLight 488] [NBP1-72873] Image from the DyLight 488 version of this antibody.



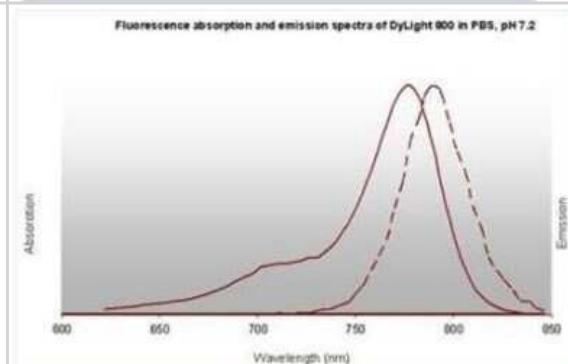
Fluorophore-linked immunosorbent assay: Goat anti-Mouse IgM Heavy Chain Secondary Antibody [NB120-9167] - Image using the DyLight 405 format of this antibody.



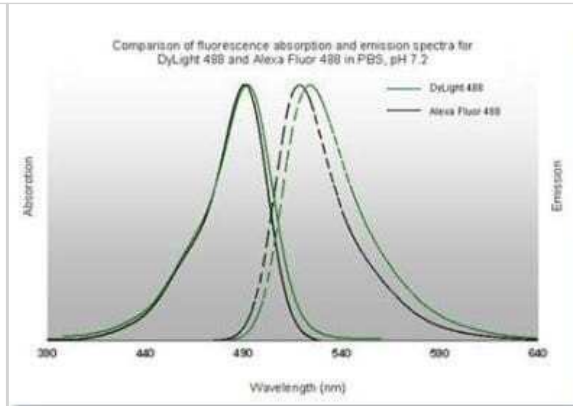
Fluorophore-linked immunosorbent assay: Goat anti-Mouse IgM Heavy Chain Secondary Antibody [NB120-9167] - Image using the DyLight 680 format of this antibody.



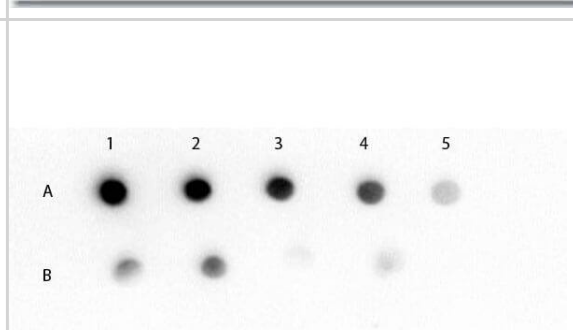
Fluorophore-linked immunosorbent assay: Goat anti-Mouse IgM Heavy Chain Secondary Antibody [NB120-9167] - Image using the DyLight 800 format of this antibody.



Fluorophore-linked immunosorbent assay: Goat anti-Mouse IgM Heavy Chain Secondary Antibody [NB120-9167] - Image using the DyLight 488 format of this antibody.



Dot Blot of Mouse IgM (mu chain) (GOAT) Antibody. Lane 1A: Mouse IgM (100 ng). Lane 1B: Mouse IgG (100 ng). Lanes 2-5: serial 3-fold dilution. Primary Antibody: Mouse IgM (mu chain) Antibody at 1 ug/mL at RT for 60 minutes. Secondary Antibody: Donkey Anti-Goat IgG Antibody HRP Conj'd



Publications

Chatzidoukaki O, Stratigi K, Goulielmaki E Et al. R-loops trigger the release of cytoplasmic ssDNAs leading to chronic inflammation upon DNA damage Sci Adv 2021-11-19 [PMID: 34797720]

Details:

Citation using the DyLight 550 version of this antibody.

Ghori FF, Wahid M Induced Pluripotent Stem Cells from urine of Duchenne Muscular Dystrophy patients Pediatr Int 2021-02-18 [PMID: 33599058]



Novus Biologicals USA

10730 E. Briarwood Avenue
Centennial, CO 80112
USA
Phone: 303.730.1950
Toll Free: 1.888.506.6887
Fax: 303.730.1966
nb-customerservice@bio-techne.com

Bio-Techne Canada

21 Canmotor Ave
Toronto, ON M8Z 4E6
Canada
Phone: 905.827.6400
Toll Free: 855.668.8722
Fax: 905.827.6402
canada.inquires@bio-techne.com

Bio-Techne Ltd

19 Barton Lane
Abingdon Science Park
Abingdon, OX14 3NB, United Kingdom
Phone: (44) (0) 1235 529449
Free Phone: 0800 37 34 15
Fax: (44) (0) 1235 533420
info.EMEA@bio-techne.com

General Contact Information

www.novusbio.com
Technical Support: nb-technical@bio-techne.com
Orders: nb-customerservice@bio-techne.com
General: novus@novusbio.com

Products Related to NB120-9167

NB100-524	NOD2 Antibody (2D9) - BSA Free
NBP1-96772	Human IgM Heavy Chain Isotype Control
7268-CT-100	CTLA-4 [Unconjugated]
NB200-541	Complement C4b/d Antibody (16D2)

Limitations

This product is for research use only and is not approved for use in humans or in clinical diagnosis. Secondary Antibodies are guaranteed for 1 year from date of receipt.

For more information on our 100% guarantee, please visit www.novusbio.com/guarantee

Earn gift cards/discounts by submitting a review: www.novusbio.com/reviews/submit/NB120-9167

Earn gift cards/discounts by submitting a publication using this product:
www.novusbio.com/publications

