

Product Datasheet

beta Tubulin Antibody (TU-06) - BSA Free NB120-7792

Unit Size: 0.1 mg

Store at 4C. Do not freeze.

www.novusbio.com



technical@novusbio.com

Reviews: 1 **Publications: 2**

Protocols, Publications, Related Products, Reviews, Research Tools and Images at:
www.novusbio.com/NB120-7792

Updated 2/21/2025 v.20.1

Earn rewards for product
reviews and publications.

Submit a publication at www.novusbio.com/publications

Submit a review at www.novusbio.com/reviews/destination/NB120-7792



NB120-7792

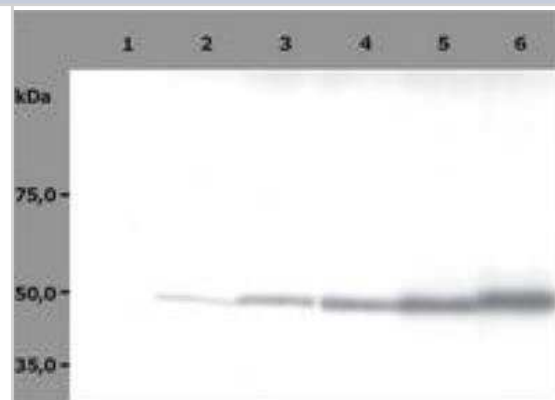
beta Tubulin Antibody (TU-06) - BSA Free

Product Information	
Unit Size	0.1 mg
Concentration	1.0 mg/ml
Storage	Store at 4C. Do not freeze.
Clonality	Monoclonal
Clone	TU-06
Preservative	0.09% Sodium Azide
Isotype	IgM
Purity	Multi-step
Buffer	TBS (pH 8.0)
Product Description	
Host	Mouse
Gene ID	203068
Gene Symbol	TUBB
Species	Human, Mouse, Rat, Porcine, Chicken, Fish, Plant
Reactivity Notes	Expected species cross-reactivity based on sequence homology: Carp, Bovine, Hamster, S.Cerevisiae, S.Pombe, and Protozoa. Plant reactivity reported in scientific literature (PMID: 26594217).
Marker	Microtubule Marker
Specificity/Sensitivity	The antibody TU-06 recognizes an epitope (aa 81-95) on phylogenetically conserved N-terminal structural domain of beta-tubulin (recognizes all beta-tubulin isoforms) in various species.
Immunogen	Beta-subunits of porcine brain tubulin.
Product Application Details	
Applications	Western Blot, Immunocytochemistry/ Immunofluorescence, Immunohistochemistry, Immunohistochemistry-Paraffin, Single Cell Western
Recommended Dilutions	Western Blot 1-2 ug/ml, Immunohistochemistry 1:10-1:500, Immunocytochemistry/ Immunofluorescence 2 ug/ml, Immunohistochemistry-Paraffin 5 ug/ml, Single Cell Western
Application Notes	Immunocytochemistry: fixed and permeabilized cells; positive control: 3T3 mouse embryonal fibroblast cell line. Immunohistochemistry (paraffin sections) positive tissue: heart.

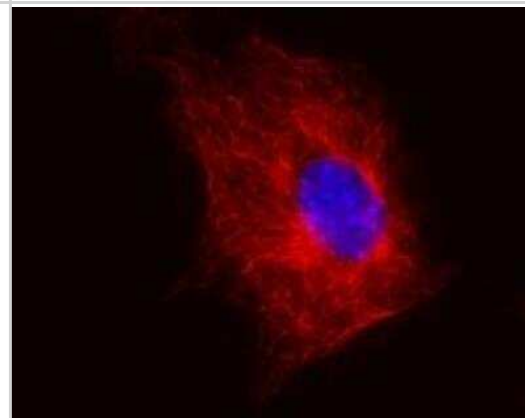


Images

Western Blot: beta Tubulin Antibody (TU-06) [NB120-7792] - Analysis (reducing conditions) of HPB-ALL human peripheral blood leukemia cell line. Lane 1: negative control. Lane 2,3,4,5,6: immunostaining with anti-beta-tubulin (TU-06; dilution 0,5 ug/ml, 1 ug/ml, 2 ug/ml, 4 ug/ml, 5 ug/ml).



Immunocytochemistry/Immunofluorescence: beta Tubulin Antibody (TU-06) [NB120-7792] - Staining of 3T3 mouse embryonal fibroblast cell line using anti-beta-tubulin (TU-06) (detection by Goat anti-mouse IgM Cy (R)5). Nucleus is stained with DAPI (blue).



Publications

Gzyl J, Chmielowska-Bak J, Przymusinski R, Gwozdz EA. Cadmium affects microtubule organization and post-translational modifications of tubulin in seedlings of soybean (*Glycine max* L.). *Front Plant Sci.* 2015-11-23 [PMID: 26594217] (WB, Plant)

Details:

Tubulin antibody (clone TU-01) was used for WB analysis (2D gel electrophoresis) of various alpha-isoforms of tubulin in seedlings of soybean *Glycine max* L (FIGURE 5).

Lee C, Mullen Grey AK, Riddick DS. Loss of hepatic aryl hydrocarbon receptor protein in adrenalectomized rats does not involve altered levels of the receptor's cytoplasmic chaperones. *Can J Physiol Pharmacol.* 2013-12-01 [PMID: 24289088] (WB, Rat)



Novus Biologicals USA

10730 E. Briarwood Avenue
Centennial, CO 80112
USA
Phone: 303.730.1950
Toll Free: 1.888.506.6887
Fax: 303.730.1966
nb-customerservice@bio-techne.com

Bio-Techne Canada

21 Canmotor Ave
Toronto, ON M8Z 4E6
Canada
Phone: 905.827.6400
Toll Free: 855.668.8722
Fax: 905.827.6402
canada.inquires@bio-techne.com

Bio-Techne Ltd

19 Barton Lane
Abingdon Science Park
Abingdon, OX14 3NB, United Kingdom
Phone: (44) (0) 1235 529449
Free Phone: 0800 37 34 15
Fax: (44) (0) 1235 533420
info.EMEA@bio-techne.com

General Contact Information

www.novusbio.com
Technical Support: nb-technical@bio-techne.com
Orders: nb-customerservice@bio-techne.com
General: novus@novusbio.com

Products Related to NB120-7792

HAF007	Goat anti-Mouse IgG Secondary Antibody [HRP]
NB720-B	Rabbit anti-Mouse IgG (H+L) Secondary Antibody [Biotin]
NBP2-62224	Mouse IgM Isotype Control (PFR-03)
NB100-56459PEP	beta Tubulin Antibody Blocking Peptide

Limitations

This product is for research use only and is not approved for use in humans or in clinical diagnosis. Primary Antibodies are guaranteed for 1 year from date of receipt.

For more information on our 100% guarantee, please visit www.novusbio.com/guarantee

Earn gift cards/discounts by submitting a review: www.novusbio.com/reviews/submit/NB120-7792

Earn gift cards/discounts by submitting a publication using this product:
www.novusbio.com/publications

