

Product Datasheet

Chicken anti-Human IgG (H+L) Secondary Antibody [Alkaline Phosphatase] NB120-6865

Unit Size: 1 mg

Store at 4C. Do not freeze.

www.novusbio.com



technical@novusbio.com

Protocols, Publications, Related Products, Reviews, Research Tools and Images at:
www.novusbio.com/NB120-6865

Updated 10/23/2024 v.20.1

Earn rewards for product
reviews and publications.

Submit a publication at www.novusbio.com/publications

Submit a review at www.novusbio.com/reviews/destination/NB120-6865



NB120-6865

Chicken anti-Human IgG (H+L) Secondary Antibody [Alkaline Phosphatase]

Product Information	
Unit Size	1 mg
Concentration	Please see the vial label for concentration. If unlisted please contact technical services.
Storage	Store at 4C. Do not freeze.
Clonality	Polyclonal
Preservative	0.01% Sodium Azide
Isotype	IgG
Conjugate	Alkaline Phosphatase
Purity	Multi-step
Buffer	0.05 M Tris Chloride, 0.15M Sodium Chloride, 0.001M Magnesium Chloride, 0.0001M Zinc Chloride, 50% (v/v) Glycerol; pH 8.0, 10 mg/mL Bovine Serum Albumin (BSA) - Immunoglobulin and Protease free

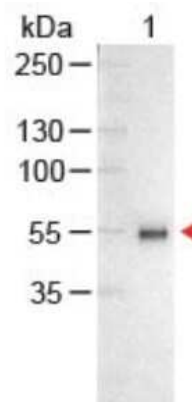
Product Description	
Description	<p>Store vial at 4C before opening. DO NOT FREEZE. This product is stable at 4C as an undiluted liquid. Dilute only prior to immediate use. Freezing alkaline phosphatase conjugates will result in a substantial loss of enzymatic activity.</p> <p>This product was prepared from monospecific antiserum by immunoaffinity chromatography using Human IgG coupled to agarose beads followed by solid phase adsorption(s) to remove any unwanted reactivities. Assay by immunoelectrophoresis resulted in a single precipitin arc against anti-Alkaline Phosphatase (calf intestine), anti-Chicken Serum, Human IgG and Human Serum.</p>
Host	Chicken
Species	Human
Immunogen	Human IgG whole molecule
Notes	Chicken products cannot be exported to Canada.

Product Application Details	
Applications	Western Blot, ELISA, Immunohistochemistry
Recommended Dilutions	Western Blot 1:500 - 1:2500, ELISA 1:2000 - 1:10000, Immunohistochemistry 1:200 - 1:1000
Application Notes	This product has been tested by western blot and assayed against 1.0 ug of Human IgG in a standard capture ELISA using pNPP (p-nitrophenyl phosphate) as a substrate for 30 minutes at room temperature. A working dilution of 1:1,600 to 1:9,000 of the reconstitution concentration is suggested for this product.



Images

Western Blot: Chicken anti-Human IgG (H+L) Secondary Antibody [Alkaline Phosphatase] [NB120-6865] - Western Blot of Chicken anti-Human IgG (H+L) Secondary Antibody [Alkaline Phosphatase] Lane 1: Human IgG Load: 100 ng per lane Secondary antibody: Chicken anti-Human IgG (H+L) Secondary Antibody [Alkaline Phosphatase] at 1:1000 for 60 min at RT Block: Fluorescent blocking buffer for 30 min at RT. Predicted/Observed size: 55 and 28 kDa, 55 kDa





Novus Biologicals USA

10730 E. Briarwood Avenue
Centennial, CO 80112
USA
Phone: 303.730.1950
Toll Free: 1.888.506.6887
Fax: 303.730.1966
nb-customerservice@bio-techne.com

Bio-Techne Canada

21 Canmotor Ave
Toronto, ON M8Z 4E6
Canada
Phone: 905.827.6400
Toll Free: 855.668.8722
Fax: 905.827.6402
canada.inquires@bio-techne.com

Bio-Techne Ltd

19 Barton Lane
Abingdon Science Park
Abingdon, OX14 3NB, United Kingdom
Phone: (44) (0) 1235 529449
Free Phone: 0800 37 34 15
Fax: (44) (0) 1235 533420
info.EMEA@bio-techne.com

General Contact Information

www.novusbio.com
Technical Support: nb-technical@bio-
techne.com
Orders: nb-customerservice@bio-techne.com
General: novus@novusbio.com

Limitations

This product is for research use only and is not approved for use in humans or in clinical diagnosis. Secondary Antibodies are guaranteed for 1 year from date of receipt.

For more information on our 100% guarantee, please visit www.novusbio.com/guarantee

Earn gift cards/discounts by submitting a review: www.novusbio.com/reviews/submit/NB120-6865

Earn gift cards/discounts by submitting a publication using this product:
www.novusbio.com/publications

