

# Product Datasheet

## Donkey anti-Rabbit IgG (H+L) Secondary Antibody [Texas Red] NB120-6800

Unit Size: 1 mg

Store at 4C short term. Aliquot and store at -20C long term. Avoid freeze-thaw cycles.

[www.novusbio.com](http://www.novusbio.com)



[technical@novusbio.com](mailto:technical@novusbio.com)

Protocols, Publications, Related Products, Reviews, Research Tools and Images at:  
[www.novusbio.com/NB120-6800](http://www.novusbio.com/NB120-6800)

Updated 10/23/2024 v.20.1

Earn rewards for product reviews and publications.

Submit a publication at [www.novusbio.com/publications](http://www.novusbio.com/publications)

Submit a review at [www.novusbio.com/reviews/destination/NB120-6800](http://www.novusbio.com/reviews/destination/NB120-6800)



**NB120-6800**

Donkey anti-Rabbit IgG (H+L) Secondary Antibody [Texas Red]

Product Information	
<b>Unit Size</b>	1 mg
<b>Concentration</b>	Please see the vial label for concentration. If unlisted please contact technical services.
<b>Storage</b>	Store at 4C short term. Aliquot and store at -20C long term. Avoid freeze-thaw cycles.
<b>Clonality</b>	Polyclonal
<b>Preservative</b>	0.01% Sodium Azide
<b>Isotype</b>	IgG
<b>Conjugate</b>	Texas Red
<b>Purity</b>	Multi-step
<b>Buffer</b>	0.02 M Potassium Phosphate, 0.15 M Sodium Chloride, pH 7.2, 10 mg/mL Bovine Serum Albumin (BSA) - Immunoglobulin and Protease free

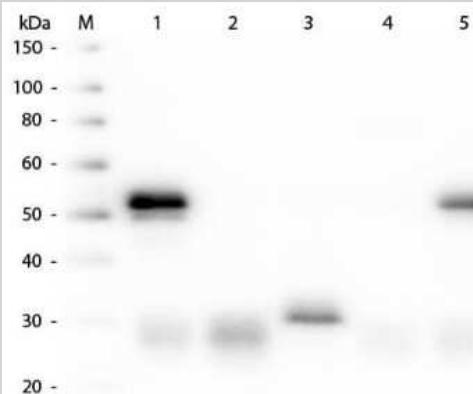
Product Description	
<b>Description</b>	<p>For extended storage aliquot contents and freeze at -20C or below. Avoid cycles of freezing and thawing. Centrifuge product if not completely clear after standing at room</p> <p>This product was prepared from monospecific antiserum by immunoaffinity chromatography using Rabbit IgG coupled to agarose beads followed by solid phase adsorption(s) to remove any unwanted reactivities. Assay by immunoelectrophoresis resulted in a single precipitin arc against anti-Donkey Serum, Rabbit IgG, and Rabbit Serum.</p>
<b>Host</b>	Donkey
<b>Species</b>	Rabbit
<b>Immunogen</b>	Rabbit IgG whole molecule

Product Application Details	
<b>Applications</b>	Western Blot, Dot Blot, Fluorophore-linked immunosorbent assay, Flow Cytometry, Immunocytochemistry/ Immunofluorescence, Immunohistochemistry, Immunohistochemistry-Paraffin
<b>Recommended Dilutions</b>	Western Blot, Flow Cytometry 1:1:10 - 1:1000, Immunohistochemistry 1:500 - 1:1000, Immunocytochemistry/ Immunofluorescence 1:1000 - 1:5000, Immunohistochemistry-Paraffin 1:500 - 1:1000, Dot Blot, Fluorophore-linked immunosorbent assay 1:10000 - 1:50000
<b>Application Notes</b>	This product has been tested by dot blot and western blot and is designed for immunofluorescence microscopy, fluorescence based plate assays (FLISA) and fluorescent western blotting. This product is also suitable for multiplex analysis, including multicolor imaging, utilizing various commercial platforms.

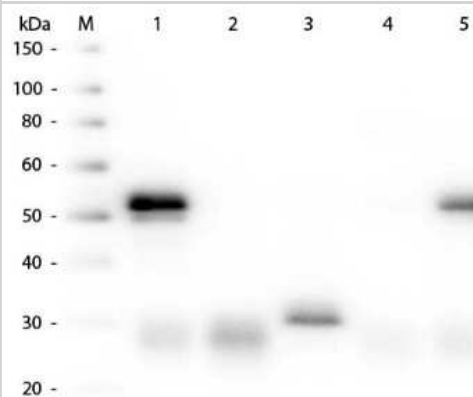


## Images

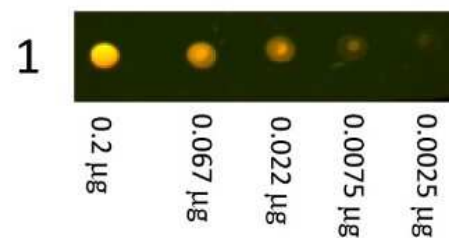
Western Blot: Donkey anti-Rabbit IgG (H+L) Secondary Antibody [Texas Red] [NB120-6800] - Western Blot of Donkey anti-Rabbit IgG (H+L) Secondary antibody [Texas Red]. Lane M: 3 ul Molecular Ladder. Lane 1: Rabbit IgG whole molecule. Lane 2: Rabbit IgG F(ab) Fragment. Lane 3: Rabbit IgG F(c) Fragment. Lane 4: Rabbit IgM Whole Molecule. Lane 5: Normal Rabbit Serum. All samples were reduced. Load: 50 ng per lane. Block for 30 min at RT. Primary Antibody: Donkey anti-Rabbit IgG (H+L) Secondary antibody [Texas Red] 1:5,000 for 60 min at RT. Secondary antibody: None. Predicted/Obsevered Size: 25 and 50 kDa for Rabbit IgG and Serum, 25 kDa for F(c) and F(ab), 70 and 23 kDa for IgM. Rabbit F(c) migrates slightly higher.



Western Blot: Donkey anti-Rabbit IgG (H+L) Secondary Antibody [Texas Red] [NB120-6800] - Western Blot of Donkey anti-Rabbit IgG (H+L) Secondary Antibody [Texas Red]



Dot Blot: Donkey anti-Rabbit IgG (H+L) Secondary Antibody [Texas Red] [NB120-6800] - Dot Blot showing the detection of Rabbit IgG using Donkey anti-Rabbit IgG (H+L) Secondary Antibody [Texas Red]. A three-fold serial dilution of Rabbit IgG starting at 200ng was spotted onto 0.45 um nitrocellulose. After blocking in 5% western blot blocking reagent





### **Novus Biologicals USA**

10730 E. Briarwood Avenue  
Centennial, CO 80112  
USA  
Phone: 303.730.1950  
Toll Free: 1.888.506.6887  
Fax: 303.730.1966  
nb-customerservice@bio-techne.com

### **Bio-Techne Canada**

21 Canmotor Ave  
Toronto, ON M8Z 4E6  
Canada  
Phone: 905.827.6400  
Toll Free: 855.668.8722  
Fax: 905.827.6402  
canada.inquires@bio-techne.com

### **Bio-Techne Ltd**

19 Barton Lane  
Abingdon Science Park  
Abingdon, OX14 3NB, United Kingdom  
Phone: (44) (0) 1235 529449  
Free Phone: 0800 37 34 15  
Fax: (44) (0) 1235 533420  
info.EMEA@bio-techne.com

### **General Contact Information**

www.novusbio.com  
Technical Support: nb-technical@bio-  
techne.com  
Orders: nb-customerservice@bio-techne.com  
General: novus@novusbio.com

### **Limitations**

This product is for research use only and is not approved for use in humans or in clinical diagnosis. Secondary Antibodies are guaranteed for 1 year from date of receipt.

For more information on our 100% guarantee, please visit [www.novusbio.com/guarantee](http://www.novusbio.com/guarantee)

Earn gift cards/discounts by submitting a review: [www.novusbio.com/reviews/submit/NB120-6800](http://www.novusbio.com/reviews/submit/NB120-6800)

Earn gift cards/discounts by submitting a publication using this product:  
[www.novusbio.com/publications](http://www.novusbio.com/publications)

