

# Product Datasheet

## Goat anti-Mouse IgG (H+L) Secondary Antibody [Rhodamine] NB120-6786

Unit Size: 1 mg

Store at 4C short term. Aliquot and store at -20C long term. Avoid freeze-thaw cycles.

[www.novusbio.com](http://www.novusbio.com)



[technical@novusbio.com](mailto:technical@novusbio.com)

### Publications: 1

Protocols, Publications, Related Products, Reviews, Research Tools and Images at:  
[www.novusbio.com/NB120-6786](http://www.novusbio.com/NB120-6786)

Updated 10/23/2024 v.20.1

Earn rewards for product  
reviews and publications.

Submit a publication at [www.novusbio.com/publications](http://www.novusbio.com/publications)

Submit a review at [www.novusbio.com/reviews/destination/NB120-6786](http://www.novusbio.com/reviews/destination/NB120-6786)



**NB120-6786**

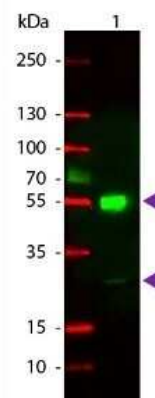
Goat anti-Mouse IgG (H+L) Secondary Antibody [Rhodamine]

Product Information	
Unit Size	1 mg
Concentration	Please see the vial label for concentration. If unlisted please contact technical services.
Storage	Store at 4C short term. Aliquot and store at -20C long term. Avoid freeze-thaw cycles.
Clonality	Polyclonal
Preservative	0.01% Sodium Azide
Isotype	IgG
Conjugate	Rhodamine
Purity	Immunogen affinity purified
Buffer	0.02 M Potassium Phosphate, 0.15 M Sodium Chloride, pH 7.2, 10 mg/mL Bovine Serum Albumin (BSA) - Immunoglobulin and Protease free
Product Description	
Description	<p>For extended storage aliquot contents and freeze at -20C or below. Avoid cycles of freezing and thawing. Centrifuge product if not completely clear after standing at room</p> <p>This product was prepared from monospecific antiserum by immunoaffinity chromatography using Mouse IgG coupled to agarose beads. Assay by immunoelectrophoresis resulted in a single precipitin arc against anti-Goat Serum, Mouse IgG and Mouse Serum.</p>
Host	Goat
Species	Mouse
Immunogen	Mouse IgG whole molecule
Product Application Details	
Applications	Western Blot, Dot Blot, Fluorophore-linked immunosorbent assay, Flow Cytometry, Immunocytochemistry/ Immunofluorescence, Immunohistochemistry, Immunohistochemistry-Paraffin
Recommended Dilutions	Western Blot 1:1000 - 1:10000, Flow Cytometry 1:500 - 1:2500, Immunohistochemistry, Immunocytochemistry/ Immunofluorescence 1:1000 - 1:5000, Immunohistochemistry-Paraffin 1:200 - 1:500, Dot Blot, Fluorophore-linked immunosorbent assay 1:10000 - 1:50000
Application Notes	This product has been tested by dot blot and western blot and is available in a variety of formats. Anti IgG secondary antibody conjugated is suitable for ELISA, Immunohistochemistry western blotting as well as other peroxidase antibody based assays.



## Images

Western Blot: Goat anti-Mouse IgG (H+L) Secondary Antibody [Rhodamine] [NB120-6786] - Western Blot of Goat anti-Mouse IgG (H+L) Secondary Antibody [Rhodamine]. Lane 1: Mouse IgG. Lane 2: none. Load: 50 ng per lane. Primary antibody: none. Secondary antibody: Goat anti-Mouse IgG (H+L) Secondary Antibody [Rhodamine] at 1:1000 for 60 min at RT. Block: Fluorescent blocking buffer for 30 min at RT. Predicted/Observed size: 25 & 55 kDa, 25 & 55 kDa for Goat IgG. Other band(s): none.



Dot Blot: Goat anti-Mouse IgG (H+L) Secondary Antibody [Rhodamine] [NB120-6786] - Dot Blot of Goat anti-Mouse IgG (H+L) Secondary Antibody [Rhodamine].  
Antigen: Mouse IgG.  
Load: Lane 1 - 50ng Lane 2 - 16.67ng Lane 3 - 5.56ng Lane 4 - 1.85ng Lane 5 - 0.62ng  
Primary antibody: none  
Secondary antibody: Goat anti-Mouse IgG (H+L) Secondary Antibody [Rhodamine] at 1:1000 for 60 min at RT.  
Block: Fluorescent blocking buffer for 60 min at RT.



Dot Blot of Rhodamine Conjugated Goat-a-Mouse IgG. Antigen: Mouse IgG. Load: Lane 1 - 50ng Lane 2 - 16.67ng Lane 3 - 5.56ng Lane 4 - 1.85ng Lane 5 - 0.62ng Primary antibody: none Secondary antibody: Goat anti-Mouse IgG (H+L) Secondary Antibody [Rhodamine] secondary antibody at 1:1,000 for 60 min at RT. Block for 60 min at RT.



## Publications

Saribas AS, DeVoto J, Golla A Et al. Discovery and characterization of novel trans-spliced products of human polyoma JC virus late transcripts from PML patients J Cell Physiol 2017-10-19 [PMID: 29044559]

Details:

Citation using the Rhodamine version of this antibody.



### **Novus Biologicals USA**

10730 E. Briarwood Avenue  
Centennial, CO 80112  
USA  
Phone: 303.730.1950  
Toll Free: 1.888.506.6887  
Fax: 303.730.1966  
nb-customerservice@bio-techne.com

### **Bio-Techne Canada**

21 Canmotor Ave  
Toronto, ON M8Z 4E6  
Canada  
Phone: 905.827.6400  
Toll Free: 855.668.8722  
Fax: 905.827.6402  
canada.inquires@bio-techne.com

### **Bio-Techne Ltd**

19 Barton Lane  
Abingdon Science Park  
Abingdon, OX14 3NB, United Kingdom  
Phone: (44) (0) 1235 529449  
Free Phone: 0800 37 34 15  
Fax: (44) (0) 1235 533420  
info.EMEA@bio-techne.com

### **General Contact Information**

[www.novusbio.com](http://www.novusbio.com)  
Technical Support: nb-technical@bio-techne.com  
Orders: nb-customerservice@bio-techne.com  
General: novus@novusbio.com

### **Limitations**

This product is for research use only and is not approved for use in humans or in clinical diagnosis. Secondary Antibodies are guaranteed for 1 year from date of receipt.

For more information on our 100% guarantee, please visit [www.novusbio.com/guarantee](http://www.novusbio.com/guarantee)

Earn gift cards/discounts by submitting a review: [www.novusbio.com/reviews/submit/NB120-6786](http://www.novusbio.com/reviews/submit/NB120-6786)

Earn gift cards/discounts by submitting a publication using this product:  
[www.novusbio.com/publications](http://www.novusbio.com/publications)

