

Product Datasheet

Rabbit anti-Human IgG (H+L) Secondary Antibody NB120-6715

Unit Size: 1 mg

Store at 4C short term. Aliquot and store at -20C long term. Avoid freeze-thaw cycles.

www.novusbio.com



technical@novusbio.com

Publications: 2

Protocols, Publications, Related Products, Reviews, Research Tools and Images at:
www.novusbio.com/NB120-6715

Updated 10/23/2024 v.20.1

Earn rewards for product
reviews and publications.

Submit a publication at www.novusbio.com/publications

Submit a review at www.novusbio.com/reviews/destination/NB120-6715



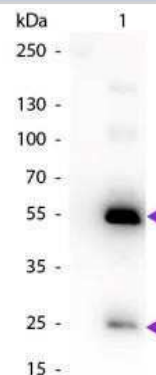
NB120-6715**Rabbit anti-Human IgG (H+L) Secondary Antibody**

Product Information	
Unit Size	1 mg
Concentration	Please see the vial label for concentration. If unlisted please contact technical services.
Storage	Store at 4C short term. Aliquot and store at -20C long term. Avoid freeze-thaw cycles.
Clonality	Polyclonal
Preservative	0.01% Sodium Azide
Isotype	IgG
Purity	Immunogen affinity purified
Buffer	0.02 M Potassium Phosphate, 0.15 M Sodium Chloride, pH 7.2
Product Description	
Description	<p>This product was prepared from monospecific antiserum by immunoaffinity chromatography using Human IgG coupled to agarose beads. Assay by immunoelectrophoresis resulted in a single precipitin arc against anti-Rabbit Serum, Human IgG and Human Serum.</p> <p>Store vial at 4C prior to opening. This product is stable for several weeks at 4C as an undiluted liquid. Dilute only prior to immediate use. For extended storage aliquot contents and freeze at -20C or below. Avoid cycles of freezing and thawing.</p>
Host	Rabbit
Species	Human
Immunogen	Human IgG whole molecule
Product Application Details	
Applications	Western Blot, ELISA, Immunohistochemistry, Peptide ELISA
Recommended Dilutions	Western Blot 1:10000 - 1:50000, ELISA 1:1000000, Immunohistochemistry 1:2000 - 1:10000, Peptide ELISA
Application Notes	<p>This product has been tested by ELISA and is suitable for western blot and immunohistochemistry, as well as other assays requiring lot-to-lot consistency.</p> <p>Use in Peptide ELISA was reported in the scientific literature (PMID: 22720696).</p>

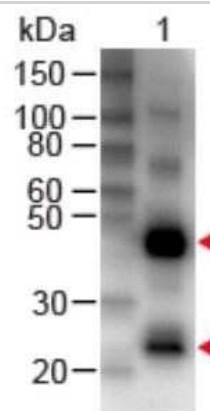


Images

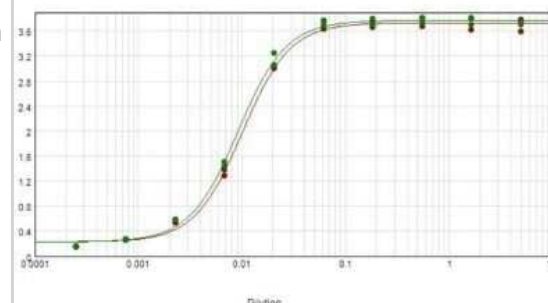
Western Blot: Rabbit anti-Human IgG (H+L) Secondary Antibody [NB120-6715] - Lane 1: Human IgG. Lane 2: None. Load: 50 ng per lane. Primary antibody: Human IgG Antibody biotin conjugated at 1:1,000 for 60 min at RT. Secondary antibody: Peroxidase streptavidin secondary antibody at 1:40,000 for 30 min at RT. Blocking: incubated with blocking buffer for 30 min at RT. Predicted/Observed size: 25 & 55 kDa, 25 & 55 kDa for Human IgG. Other band(s): None.



Western Blot: Rabbit anti-Human IgG (H+L) Secondary Antibody [NB120-6715] - Lane 1: Human IgG Load: 50 ng per lane Primary antibody: Human IgG (H&L) Antibody Biotin Conjugated at 1:1000 for 60 min RT Secondary antibody: HRP Conjugated Streptavidin at 1:40,000 for 30 min at RT Block: incubated with blocking buffer for 30 min at RT



ELISA: Rabbit anti-Human IgG (H+L) Secondary Antibody [NB120-6715] - ELISA results of purified Rabbit anti-Human IgG (H+L) Secondary Antibody [HRP] (Pre-adsorbed) tested against purified Human IgG. Each well was coated in duplicate with 1.0 ug of Human IgG (red line). The starting dilution of antibody was 5ug/ml and the X-axis represents the Log10 of a 3-fold dilution. This titration is a 4-parameter curve fit where the IC50 is defined as the titer of the antibody. Assay performed using TMB substrate.. Using the HRP format of this antibody.



Publications

Liu YS, Hsu HC, Tseng KC Et al. Lgr5 promotes cancer stemness and confers chemoresistance through ABCB1 in colorectal cancer Biomed Pharmacother 2013-10-22 [PMID: 24138824] (FLOW)

Details:

Citation using the Alkaline Phosphatase version of this antibody.

Kukreja M, Johnston SA, Stafford P. Comparative study of classification algorithms for immunosignaturing data BMC Bioinformatics 2012-06-23 [PMID: 22720696] (PEP-ELISA)



Novus Biologicals USA

10730 E. Briarwood Avenue
Centennial, CO 80112
USA
Phone: 303.730.1950
Toll Free: 1.888.506.6887
Fax: 303.730.1966
nb-customerservice@bio-techne.com

Bio-Techne Canada

21 Canmotor Ave
Toronto, ON M8Z 4E6
Canada
Phone: 905.827.6400
Toll Free: 855.668.8722
Fax: 905.827.6402
canada.inquires@bio-techne.com

Bio-Techne Ltd

19 Barton Lane
Abingdon Science Park
Abingdon, OX14 3NB, United Kingdom
Phone: (44) (0) 1235 529449
Free Phone: 0800 37 34 15
Fax: (44) (0) 1235 533420
info.EMEA@bio-techne.com

General Contact Information

www.novusbio.com
Technical Support: nb-technical@bio-techne.com
Orders: nb-customerservice@bio-techne.com
General: novus@novusbio.com

Limitations

This product is for research use only and is not approved for use in humans or in clinical diagnosis. Secondary Antibodies are guaranteed for 1 year from date of receipt.

For more information on our 100% guarantee, please visit www.novusbio.com/guarantee

Earn gift cards/discounts by submitting a review: www.novusbio.com/reviews/submit/NB120-6715

Earn gift cards/discounts by submitting a publication using this product:
www.novusbio.com/publications

